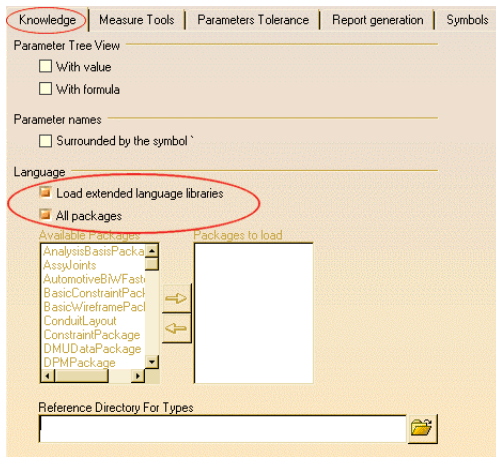


Q-Checker V5 Knowledgeware – A step by step manual

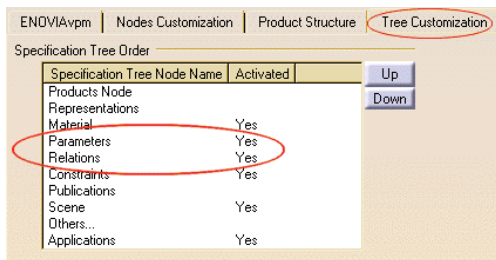
Prerequisites

The following settings in “Tools > Options” are prerequisite for a correct visualization of the knowledgeware in CATIA. To activate the settings a restart of CATIA is necessary.

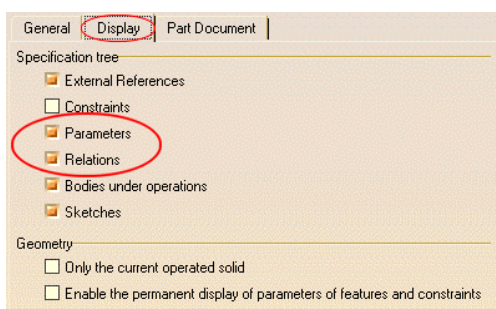
- a) General > Parameter and Measure (Since CATIA R11: General > Parameter and Measure / Language)
 / Knowledge | Language
 [ON] Load external language libraries
 [ON] All packages (depending on the profile/checks it may be possible that only a subset of these packages are needed)



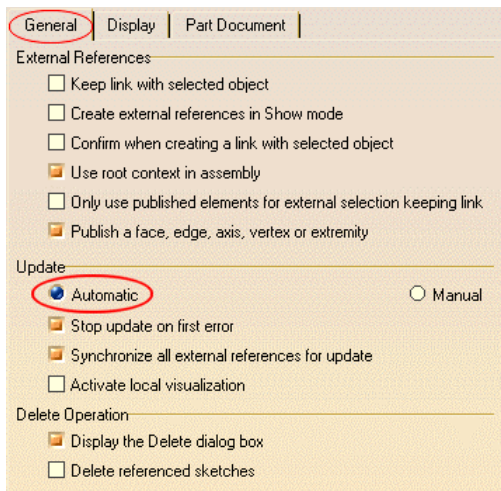
- b) Infrastructure > Product Structure
 / Tree Customization
 Parameters YES
 Relations YES



- c) Infrastructure > Part Infrastructure
 / Display | Specification tree
 [ON] Parameters
 [ON] Relations



- d) Infrastructure > Part Infrastructure
 / General | Update
 [ON] Automatic



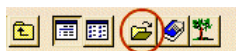
Include KWE-Checks a CATPart / CATProduct

The knowledgware becomes a part of the model, therefore the following steps (excepting step 3 and 4, which have to do only once) has to do for every model.

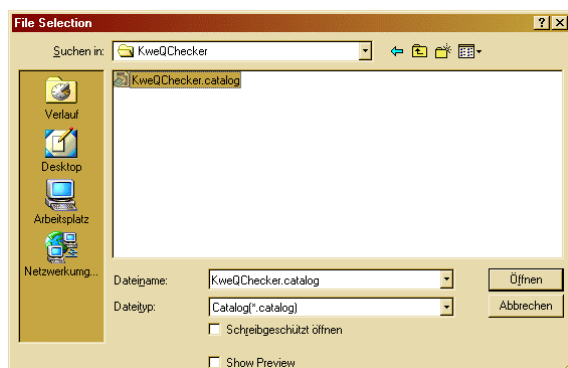
- 1.) Start CATIA and open a CATPart
- 2.) Enter Catalog in Toolbar “Tools”



- 3.) Select File: KweQChecker.catalog



The KweQChecker.catalog is located in the Q-Checker Installation Directory
 e.g. C:\Programme\TransCAT\Q-Checker161\KweQChecker\KweQchecker.catalog

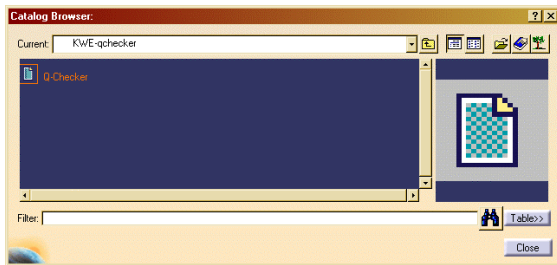


4.) KweQChecker.catalog is displayed in Catalog Browser

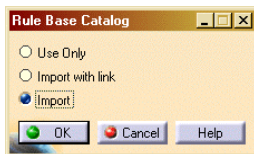


The KWE-qchecker catalog is now available for every model. Click on KWE-qchecker to open the Q-Checker Catalog.

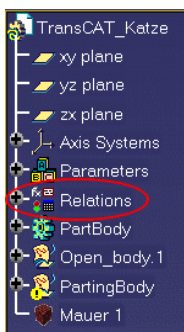
5.) The Q-Checker catalog is displayed in Catalog Browser



Double click on Q-Checker to import Rule Base Catalog



6.) Relations are now displayed in the model tree

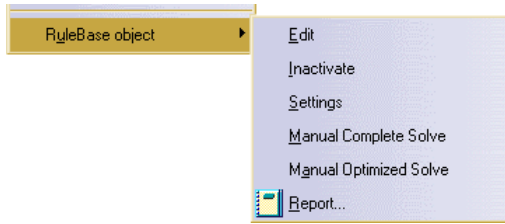


7.) Open Relations

The small whirl means that a update is necessary



Press right mouse button on “Rule Base”

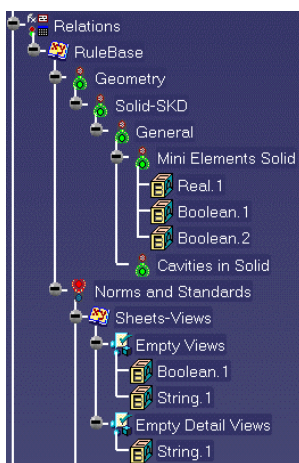


Start check by pressing the button “Manual Complete Solve” or “Manual Optimized Solve”

- Manual Complete Solve = The whole model will be checked
- Manual Optimized Solve = Only the elements which were changed since the last check will be checked

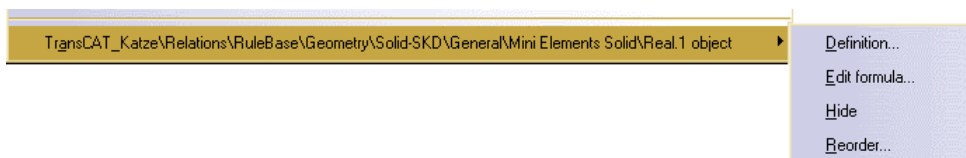
8.) Green and red lights display the status of the criteria

- Green = Criteria OK
- Red = Criteria faulty

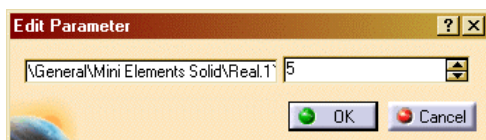


9.) Criteria options

Press right mouse button on an criterion e.g. “Real.1”



Chose the Definition to adjust the parameter of the criterion.



10.) Report

Select “Report” in “Rule Base” Menu (Step 7) to open

Validity	Hierarchy	Check Name	Percent of Success
✓	RuleBase\Geometry\Solid-SKD\General	Mini Elements Solid	100%
✓	RuleBase\Geometry\Solid-SKD\General	Cavities in Solid	100%

[Criterion OK]

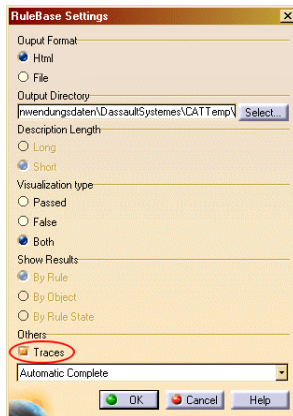
✘	RuleBase\Norms and Standards\Description Names	Root Part Name (Part Number) must match CATPart FileName	0%
---	--	---	----

[Criterion faulty]

11.) Perform automatically Check after every change in model

Open RuleBase Settings: press “Settings in “Rule Base” Menu (Step 7)
Activate “Traces”

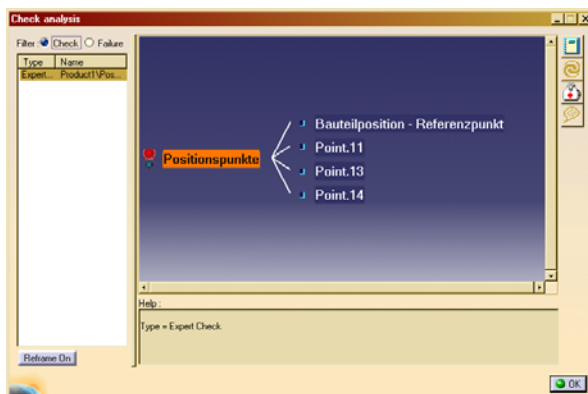
- Automatic Complete = the whole model is checked
- Automatic Optimized = only the changes are checked
- Manual Solve



12.) An other possibility to start the KWE-check is to click on the lights in the Toolbar *knowledge*.



13.) The possible actions as well as the check results are displayed in the following window.



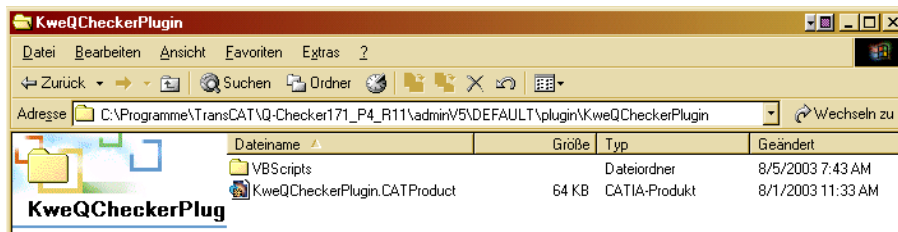
Include KWE-Checks in Q-Checker

Knowledgeware checks can be included in the Q-Checker profiles. Thereby they are available as regular checks for every model.

There Are two possibilities to include KWE-Checks in Q-Checker:

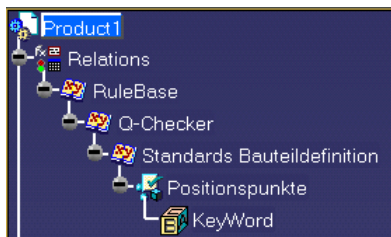
- a) VB-Scripts
- b) A CATProduct which includes KWE-Checks

In both cases the files have to be in a special folder in the Q-Checker adminV5-directory.
 ... \ TransCAT \ Q-Checker171 \ adminV5 \ Environment_xy \ plugin \ KweQCheckerPlugin



The name of the CATProduct must be ***KweQCheckerPlugin.CATProduct***. The Q-Checker searches for the folder and the CATProduct and includes it automatically if available.

The structure has to be a shown in the following picture.



In RuleBase necessarily the folder Q-Checker must exist. Below Q-Checker it is possible to create additional folder and subfolder. This folder will be displayed in the Q-Checker profile and include the checks. The checks can be created with CATIA knowledgeware expert.

Every check necessarily needs a unequivocally KeyWord. The name of the KeyWord will be displayed as check-name in the Q-Checker profile.



In the picture below is shown how the RuleBase above is displayed in the Q-Checker profile.

