



## *New features of Q-Checker Version 2*

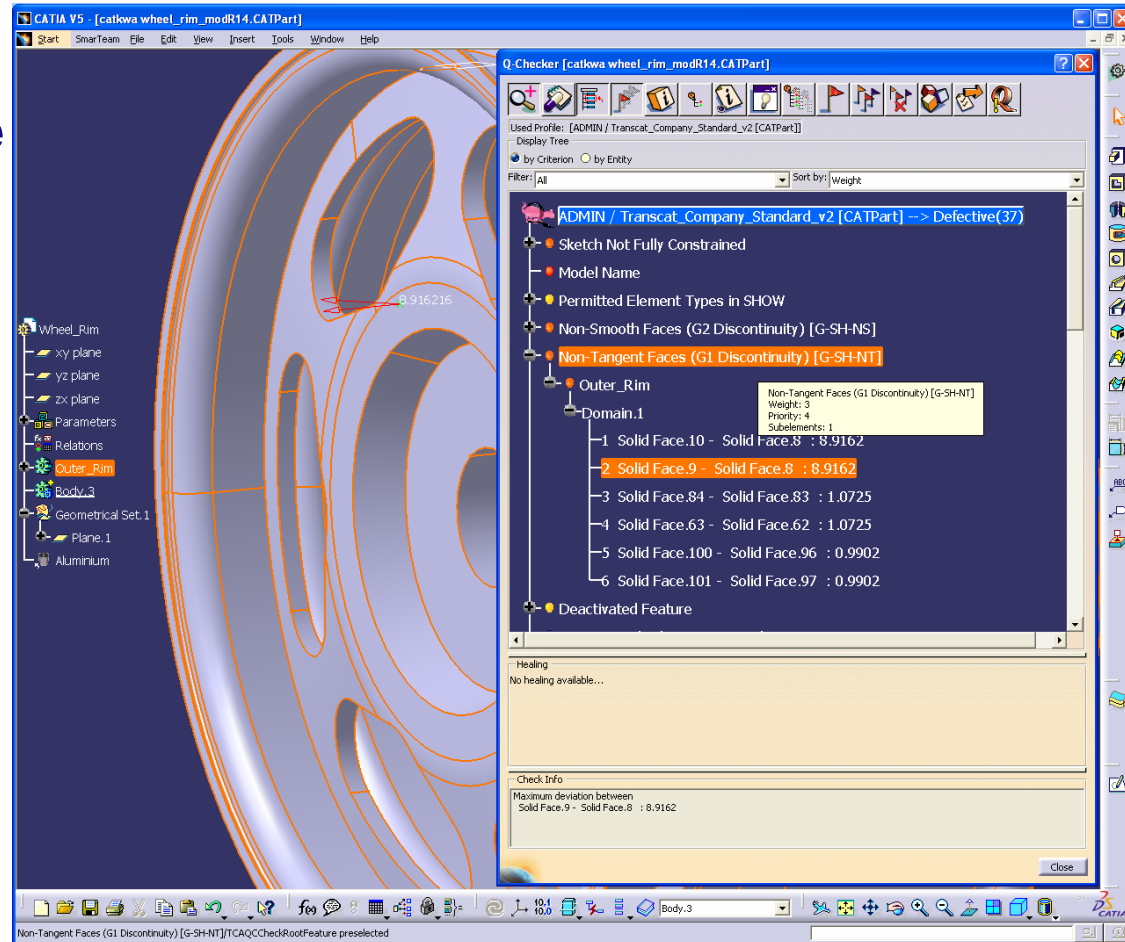
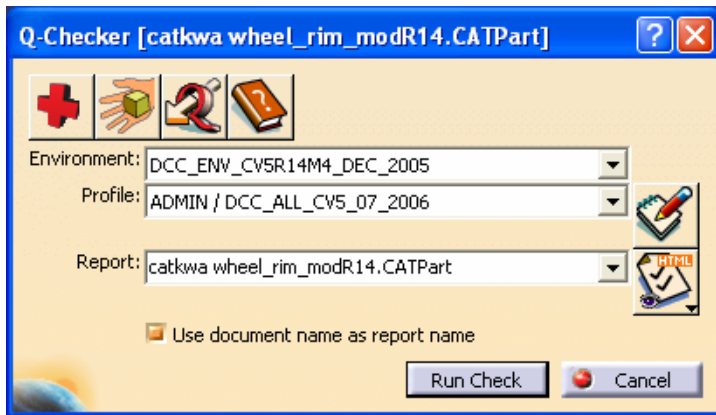
**TRANSCAT**  
A DASSAULT SYSTEMES COMPANY



# Q-Checker Version 2



## V5 Native User interface



# Q-Checker Version 2



## New and old version in parallel usage



Model assessment  
**Defective (37)**

Used check profile  
ADMIN / Transcat\_Company\_Standard\_v2 [CATPart]

Sort by: criterion Show: all

Weight	Prio	Num.	Criterion
15	4	5	Sketch Not Fully Constrained
9	3		Model Name
5	5	5	Permitted Element Types in SHOW
3	4	1	Non-Smooth Faces (G2 Discontinuity) [G-SH-NS]
3	4	1	Non-Tangent Faces (G1 Discontinuity) [G-SH-NT]
3	4	1	Outer_Rim
		6	Domain.1 <ul style="list-style-type: none"><li>1 Solid Face.10 - Solid Face.8 : 8.9162</li><li>2 Solid Face.9 - Solid Face.8 : 8.9162</li><li>3 Solid Face.84 - Solid Face.83 : 1.0725</li><li>4 Solid Face.63 - Solid Face.62 : 1.0725</li><li>5 Solid Face.100 - Solid Face.96 : 0.9902</li><li>6 Solid Face.101 - Solid Face.97 : 0.9902</li></ul>
2	5	2	Deactivated Feature
6			Current Work Object is PartBody
6	1		Empty Body
6	1		Empty Sketch
6	1		Root Part Name (Part Number) must match CATPart File Name
6	2		Solid Names match CATPart Name
			Embedded Solids [G-SO-EM]
			Embedded Surfaces [G-SU-EM]
			Embedded Wires and Points [G-CU-EM]
			Features with External Links (Multi-Model-Link) in CATPart

No healing available...

Maximum deviation between  
Solid Face.9 - Solid Face.8 : 8.9162

Environment: Transcat\_Company  
Profile: ADMIN / Transcat\_Company\_Standard\_v2 [CATPart]  
Report: catkwa wheel\_rim\_modR14.CATPart

Used Profile: ADMIN / Transcat\_Company\_Standard\_v2 [CATPart]  
Display Tree  
by Criterion by Entity

Filters: All Sort by: weight

- ADMIN / Transcat\_Company\_Standard\_v2 [CATPart] --> Defective(37)
  - Sketch Not Fully Constrained
  - Model Name
  - Permitted Element Types in SHOW
  - Non-Smooth Faces (G2 Discontinuity) [G-SH-NS]
  - Non-Tangent Faces (G1 Discontinuity) [G-SH-NT]
    - Outer\_Rim
      - Domain.1
        - 1 Solid Face.10 - Solid Face.8 : 8.9162
        - 2 Solid Face.9 - Solid Face.8 : 8.9162
        - 3 Solid Face.84 - Solid Face.83 : 1.0725
        - 4 Solid Face.63 - Solid Face.62 : 1.0725
        - 5 Solid Face.100 - Solid Face.96 : 0.9902
        - 6 Solid Face.101 - Solid Face.97 : 0.9902
  - Deactivated Feature

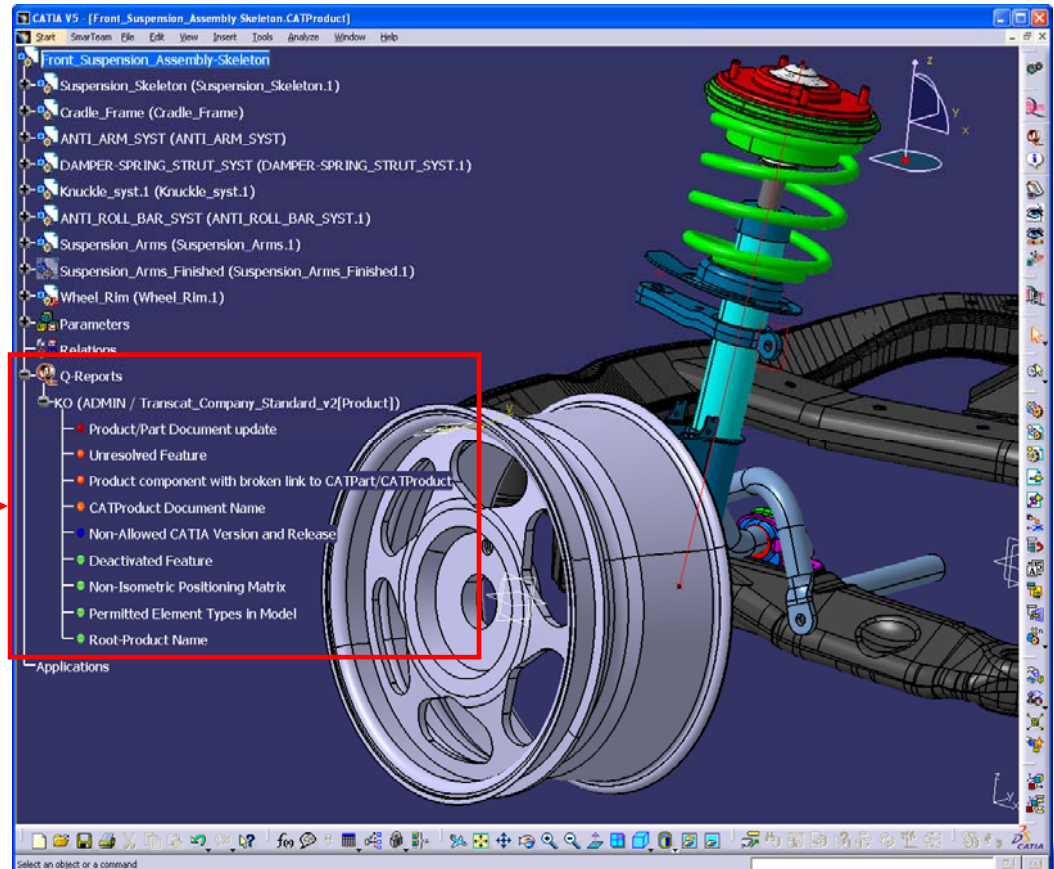
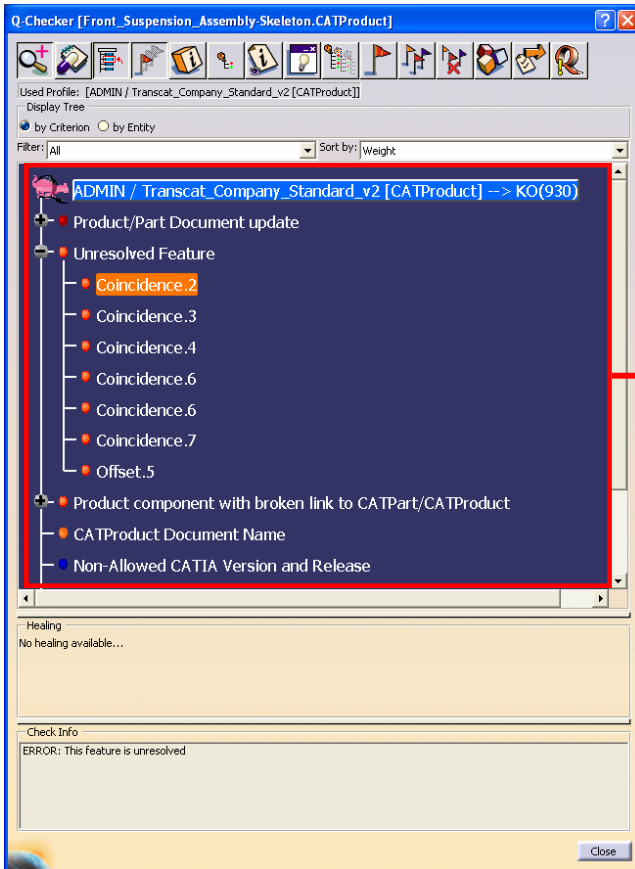
Healing  
No healing available...

Check Info  
Maximum deviation between  
Solid Face.9 - Solid Face.8 : 8.9162

# Q-Checker Version 2



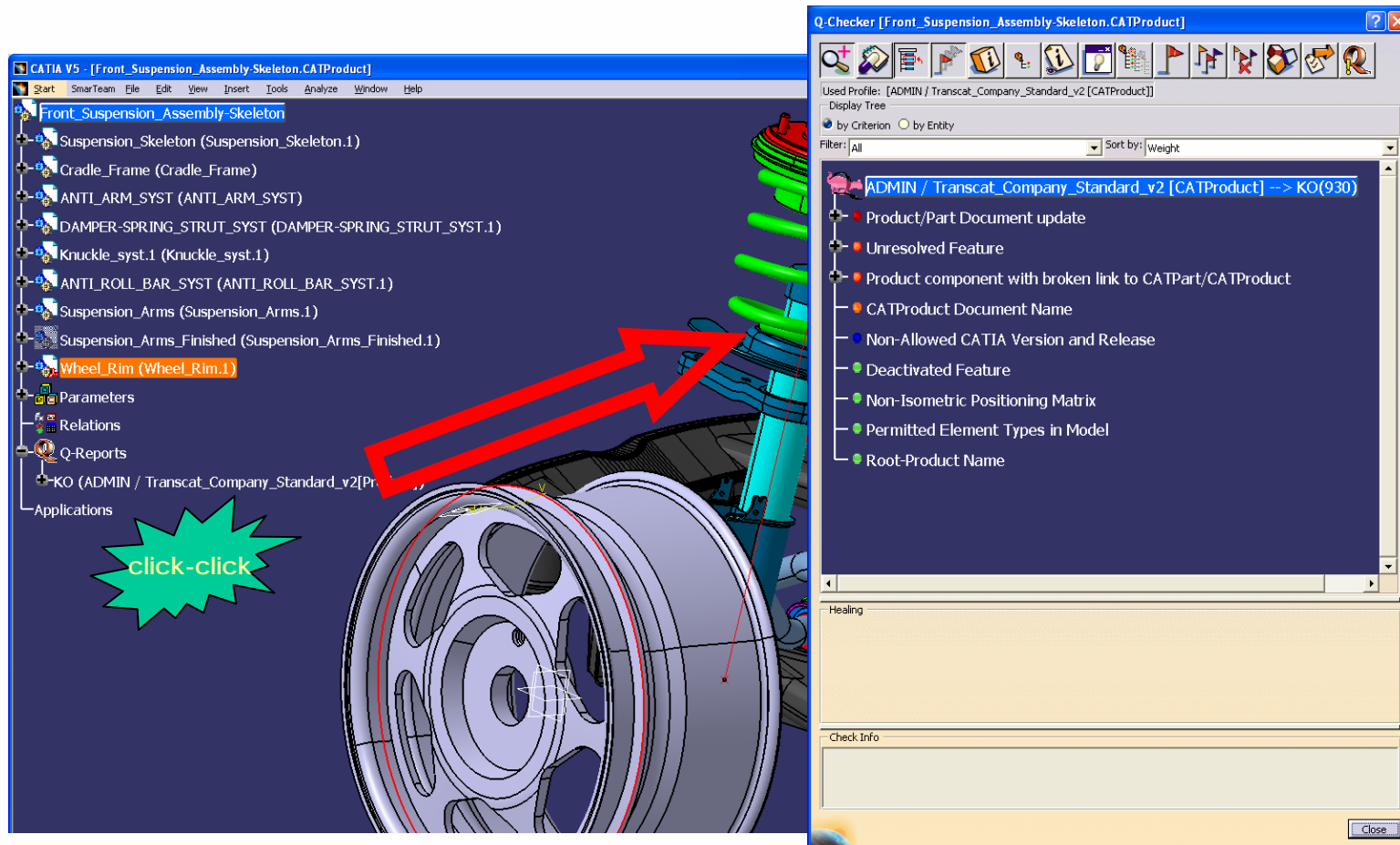
## Optional storage of check results as CATIA V5 feature in the Spec Tree



# Q-Checker Version 2



Start report with double clicking in the Spec Tree



# Q-Checker Version 2



## Incremental checks

### 2 types of check criteria:

#### Non-incremental

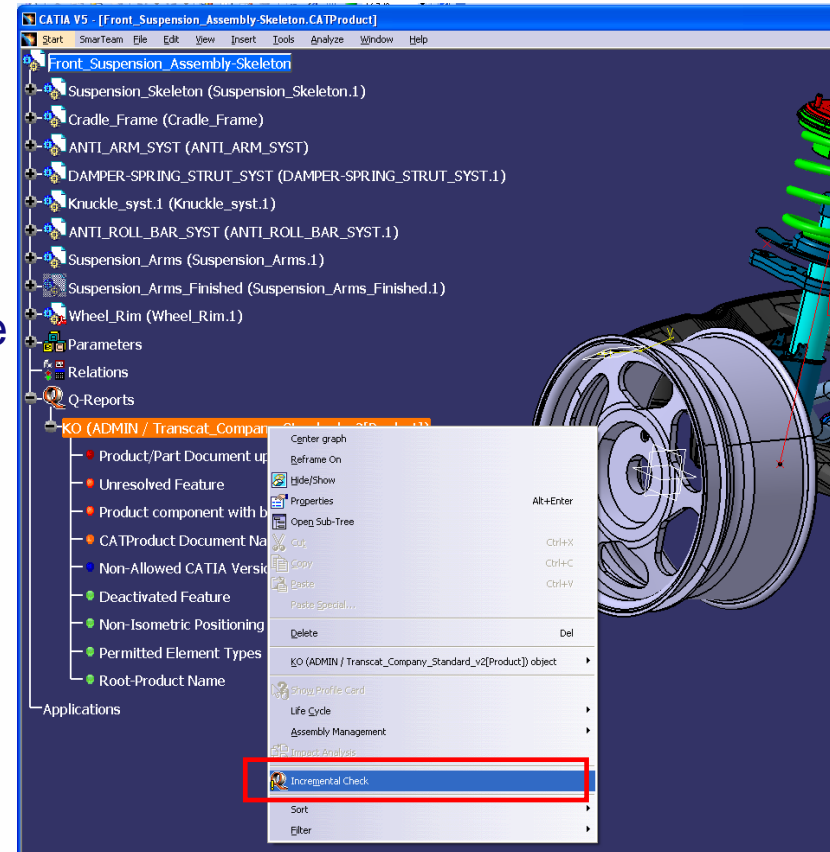
→ all features are re-checked each time

#### Incremental

→ only new or modified

features are checked

→ computation time saving for complex checks (e.g. geometrical checks)



## More geometry, standards and methodology checks

## **Software Download:**

[http://www.transcat-plm.com/tcPLM/sw/download/d\\_qV5.htm](http://www.transcat-plm.com/tcPLM/sw/download/d_qV5.htm)

**Q-Checker Version 2 requires a new license key!**

## **License request:**

<http://www.transcat-plm.com/license>

**TRANSCAT**  
A DASSAULT SYSTEMES COMPANY

