



Quick Reference Q-Checker 1.11.2 for CATIA V4

0 General

This Quick Reference is to facilitate the entrance for you into the work with the Q-Checker.

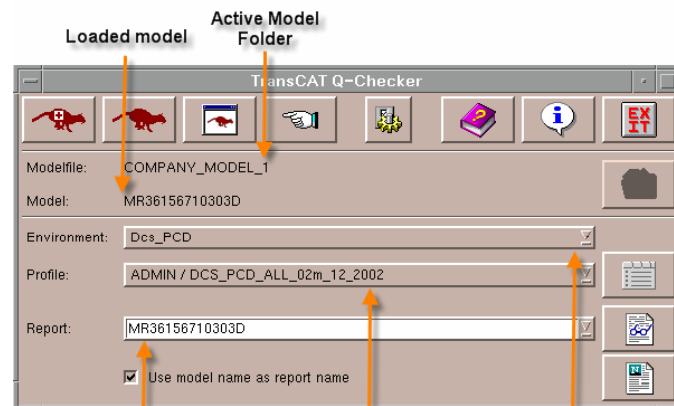
2 Start the Q-Checker

Start Q-Checker either via the CATIA top level menu (e.g. TransCAT Software /Q-Checker), or via the CATIA-command line with `/m qchecker`.

2 Prepare the check

In the **Q-Checker Start Window**:

- Select an environment and choose a check profile.



Name of check report

Active check profile

Active environment

→ see also: *Symbol explanation – Start window*

3 Start the check ...

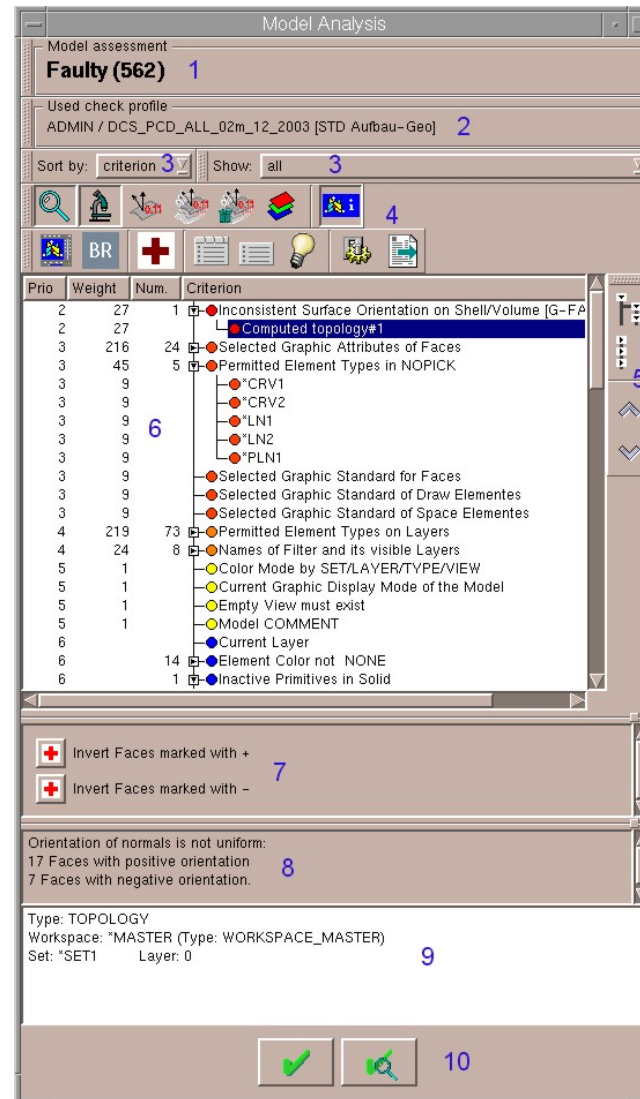
... with or without healing or in batch



with healing = **all healings activated in the profile are performed**

4 Error analysis

The check result is displayed in the **Q-Checker Analysis Window**.



The main elements of the Analysis Window:

- 1 Model assessment (status / sum of criteria weight)
- 2 Check profile [Model-Type]
- 3 Display options for analysis results
Sort by: criterion, element
Show: all, called, correct, violated, healed, general error
- 4 Action bar
- 5 Analysis handling

- 6 *hide / show all sub elements, previous / next element*
 - 7 Analysis results (List of criteria and violated elements)
 - 8 Healing possibilities (manual execution)
 - 9 Error message
 - 10 Element information
 - 10 Exit the Analysis Window
- see also: *Symbol explanation – Analysis window*

5 Model evaluation

The model assessment can be defined by the:
- error with the highest priority (as in this example)
- sum of error weights

Every criterion has a priority. To get a fast overview every priority is represented by a color. Following an example:

- ● Only a model without error is IO (in order), warning are authorized
- ● Errors of the priorities 4 and 5 result in the classification deficient
- ● Errors of the priorities 2 and 3 result in the classification faulty
- ● Errors of the priorities 1 and 0 (abort) result in the classification KO

6 Exiting the Analysis Window ...

- ... go back to the original visualization
- ... keep the current visualization



The Analysis Window is closed, report(s) and check seal(s) are written:

- Report-File** for the interactive Q-Checker analysis
- Text-File** readable text file, e.g. for documentation
- HTML-File** for display in browser, e.g. for exchange
- XML report** for the External Analysis Viewer

Check Seal Types:

Comment, Root Feature Attribute, External

Which reports / check seals are written is defined in the profile.

Transcat PLM GmbH & Co. KG
A Dassault Systèmes Company

Am Sandfeld 11c
 76149 Karlsruhe / Germany

Tel.: +49 (0)721 / 9 70 43-0
 Fax: +49 (0)721 / 9 70 43-90

<http://www.transcat-plm.com>
<http://www.q-checker.com>

Q-Checker Hotline:

Tel.: +49 (0)721 / 9 70 43-100
q-checker@transcat-plm.com



7 Symbol explanation – Start panel

	Start Q-Checker with automatic healing during the check run
	Start Q-Checker without healing (healing possibility in analysis window)
	<i>Prepare Batch run</i>
	Selection of single elements
	Q-Checker options (Language, etc.)
	Q-Checker help (PDF- Handbook)
	Q-Checker release information
	Exit Q-Checker
	Open Check Profile editor
	Display Report-File in analysis window
	Display HTML-File in browser

8 Symbol explanation – Analysis window

	Automatic zoom of the selected elements
	Graphic Fine Analysis
	Auxiliary geometry for the selected element will be created
	Auxiliary geometry for all elements will be created
	Auxiliary geometry of all elements will be deleted
	Mark selected elements
	Detailed information for the selected element
	Activate CATIA
	Buffer Refresh
	Healing of the elements according the adjustments in the check profile
	Display check profile
	Display selected criteria
	Information / Suggestions solution / application tip for the selected criteria
	Q-Checker options (Language, etc.)
	Create XML report (for external viewer)
	Exit the analyse window, go back to the original model visualization (zoom, position)
	Exit the analyse window, keep the current model visualization