



Q-CHECKER<sup>®</sup> V1.19.2

for CATIA<sup>®</sup> V5

# INSTALLATION MANUAL



## Symbols Used in the Manual

The following symbols are used in this guide; they should allow you to navigate throughout the text with greater ease:

### Warning triangle



The warning triangle refers to *critical circumstances*, which should be considered in order to avoid any problems in your work.

### Hint symbol



The light bulb relates to *hints*, which provide you with practical examples to simplify your work.

### Note symbol



The hand symbol refers to *note*, which you should bear in mind, in order to work without problems.

### Work steps' symbol



The work steps' symbol refers to a *step-by-step instruction* sheet.

TRANSCAT PLM in the Internet:

<http://www.transcat-plm.com>

Q-CHECKER in the Internet:

<http://www.q-checker.com>

Q-CHECKER Hotline:

Phone: +49 721 970 43 100

E-mail: [q-checker@transcat-plm.com](mailto:q-checker@transcat-plm.com)

## Table of Contents

1.	Software and Hardware Requirements .....	4
2.	Installing and Uninstalling under Windows.....	5
2.1	Installation .....	5
	• Preparing the CATIA environment.....	8
2.2	Deinstallation .....	11
3.	Installing under UNIX .....	12
3.1	Unpacking Files .....	12
3.2	The Created Directory Structure .....	13
3.3	Adapting Q-CHECKER to the Local CATIA Installation .....	14
3.3.1	Creating a New CATIA Environment.....	14
3.3.1.1	Adapting the Declarations to the Existing Directories.....	16
3.3.1.2	Q-CHECKER License Declaration .....	17
3.3.1.3	Specifying the Action Options .....	17
3.3.1.4	Creating an Environment.....	18
3.3.2	Expanding an Existing CATIA Environment.....	19
3.3.2.1	Adapting the Declaration to the Local Directories .....	20
3.3.2.2	Q-CHECKER License Declaration .....	20
3.3.2.3	Starting CATIA with the Q-CHECKER Environment .....	21
3.3.3	Adapt “qcheckerV5” Start Script.....	22
4.	Language Selection .....	23
4.1	Language Specification for the First Program Start .....	23
4.1.1	Language Selection by the User .....	23
5.	Installation of License Passwords .....	24
5.1	License Request .....	24
5.2	Installation of Nodelock Licenses .....	25
5.3	Installation of Concurrent Licenses.....	26
6.	Installing Check Profiles.....	29
7.	Troubleshooting .....	31

\* \* \*

# 1. Software and Hardware Requirements

Hardware:	CATIA:
<ul style="list-style-type: none"> <li>• PC</li> <li>• IBM RS/6000</li> <li>• HP</li> <li>• SGI</li> <li>• SUN</li> </ul>	<p>All CATIA platforms (P1, P2 and P3) are supported.</p>
<p><b>Operation system:</b> (minimal requirements):</p>	<p>Minimal required version: V5 R14</p>
<ul style="list-style-type: none"> <li>• Windows 2000/XP</li> <li>• AIX 5.1, 5.2, 5.3</li> <li>• HP-UX 11</li> <li>• IRIX 6.5.16m</li> <li>• SOLARIS 2.8</li> </ul>	<p>Depending on the CATIA platform, the following CATIA configuration packages must be installed and the following licenses must be available:</p> <p>CATIA P1 platform:</p> <ul style="list-style-type: none"> <li>• all configuration packages</li> <li>• at least MD1 license</li> </ul> <p>CATIA P2 platform:</p> <ul style="list-style-type: none"> <li>• at least MD2 + SA2 + PM2 configuration package and PX1 product</li> <li>• at least MD2 license</li> </ul> <p>CATIA P3 platform:</p> <ul style="list-style-type: none"> <li>• on request</li> </ul> <p>To be able to execute the Q-CHECKER <i>MML (Multi-Model Link) Reference Not Published</i> criterion, a PX1 license is required.</p>

## Additionally required software

- MOZILLA, NETSCAPE NAVIGATOR or MICROSOFT INTERNET EXPLORER

On of these Internet browsers is required to browse Q-CHECKER HTML reports.

- ADOBE ACROBAT READER (minimum required version 4.0)

ACROBAT READER is necessary to browse Q-CHECKER online help.

## Supported Standards:

- VDA-Recommendation VDA-4955/2

## 2. Installing and Uninstalling under Windows

### 2.1 Installation



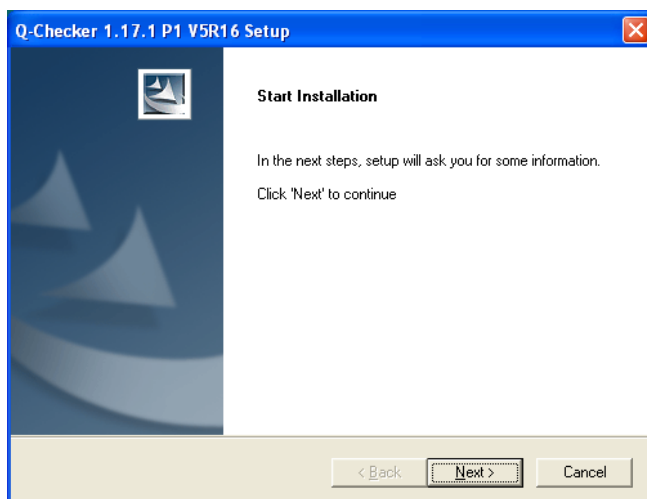
#### Steps

To install Q-CHECKER, follow these steps:

- (1) Insert the Q-CHECKER CD-ROM in your CD-ROM drive.
  - (2) Start the installation by double-clicking on the file  
CDROM:\qcheckerV5Rxx\_1192\_setup.exe.
  - (3) Follow the installation instructions displayed on the screen.
- The different installation dialog windows will be described below.

#### • Starting the installation

After starting the `qcheckerV5Rxx_1192_setup.exe` file; the following “Welcome” screen will be displayed.



To continue the installation, click the *Next* button.

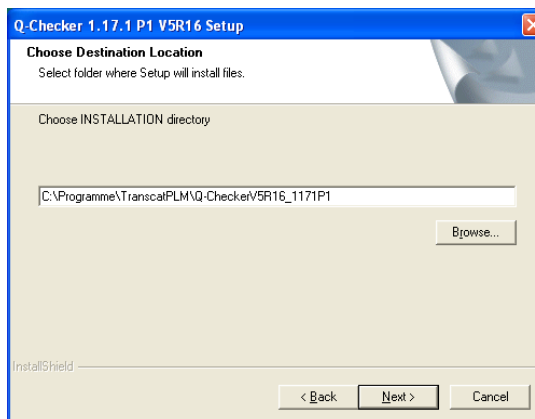
To abort the installation, click the *Cancel* button.

The installation can be aborted in every one of the installation steps by clicking the *Cancel* button; all installation actions performed will be undone then.

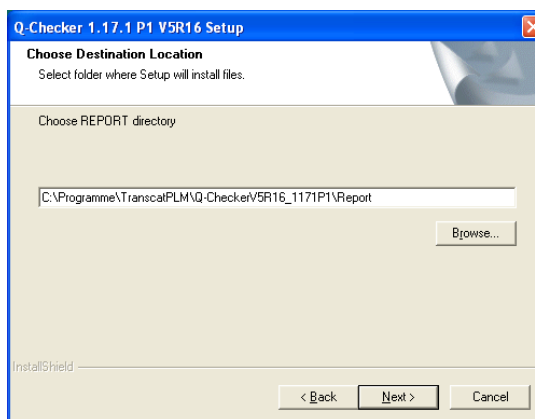
- **Selecting the installation directory for the program files**

(1) Specify the installation directory where do you want to install the Q-CHECKER files:

- Q-CHECKER itself



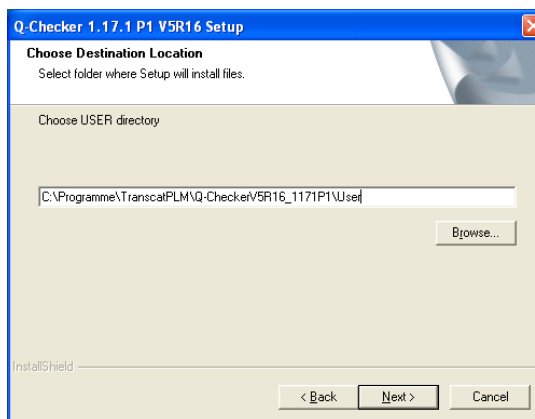
- the Q-CHECKER report files



**Note:**

This path may be modified afterwards in the CATIA environment file (variable QCADMIN).

- the Q-CHECKER user files



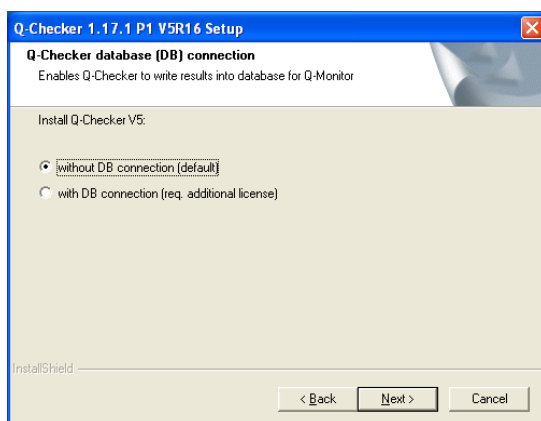
**Note:**

This path may be modified afterwards in the CATIA environment file (variable QCUSER ).

- (2) Select whether Q-CHECKER is to be installed with database connection or not. Normally, you should select the first option—„without DB connection“.  
Only in case you work with Q-MONITOR and want to store the Q-CHECKER check results in a database, select the second option—„with DB connection“.

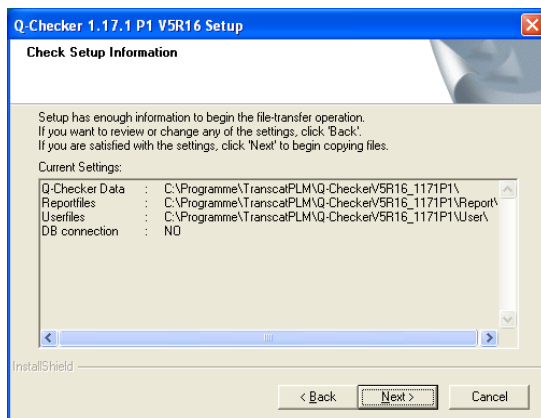
**Note:**

To use Q-CHECKER with database connection, an additional license is required (TC-qcheckerV5-db).

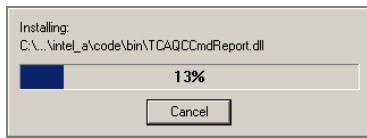
**Note:**

This setting may be modified afterwards in the CATIA environment file (variable QCLICDB).

If all specifications are made, they will be displayed all together in the dialog box following thereafter.



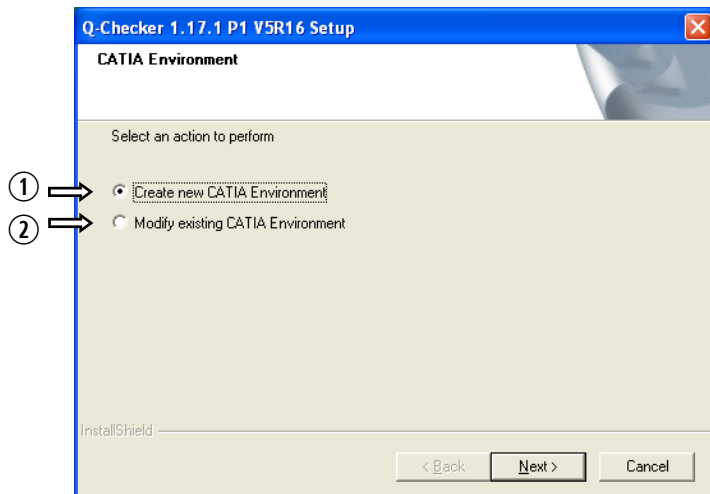
- (3) If you will click now the *Next* button, the installation will be started, the installation program will copy the files in the installation directory.



When the files are installed, the CATIA Environment window will be opened in order to prepare the environment.

### • Preparing the CATIA environment

To make Q-CHECKER available in CATIA, a CATIA environment must be prepared. To do this, in the „CATIA Environment“ dialog box, there can be chosen between two alternatives:

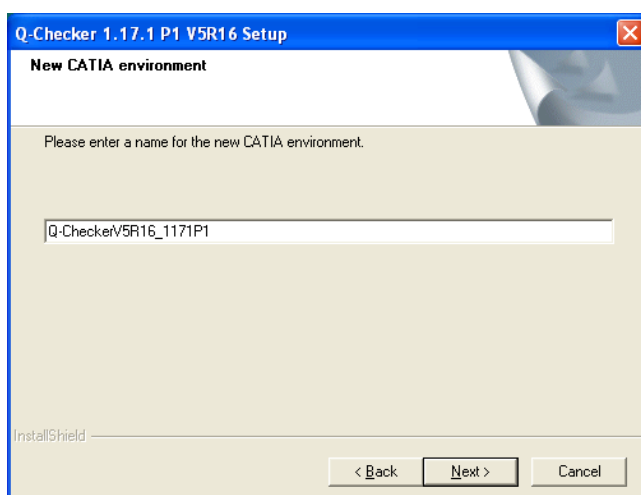


- ① Creating a new CATIA environment with all required entries.
- ② Adapting an existing environment in order to integrate the Q-CHECKER workbench in it.

Both alternatives will be explained below.

### • Alternative (1): Creating a new CATIA environment

Select the *Create new CATIA Environment* ① option and click then the *Next* button. Thereafter the *New CATIA Environment* dialog box will be opened.



Enter in the text box the name of the CATIA environment to be created. The name should be chosen so that it will be comprehensible that it is CATIA with integrated Q-CHECKER workbench.



**ATTENTION:**

The name of the environment must contain no blanks.

Click then on the *Next* button to create the CATIA environment.

- **Alternative (2):  
Adapting an existing CATIA environment**

Select in the CATIA *Environment* dialog box the *Modify existing CATIA Environment* option ② and click than the *Next* button.

Thereafter, a file selection window is opened with the environment directory displayed, that is preselected on your computer for the respective CATIA version. (Example: If you are installing Q-CHECKER for CATIA R16, the environment preselected for CATIA R16 will be opened.) If you environment files are saved in an other directory, open this directory.

Select now the CATIA environment file that you want to modify for the work with Q-CHECKER, and click than the *Open* button.

After this, the selected CATIA environment file will be adapted automatically.

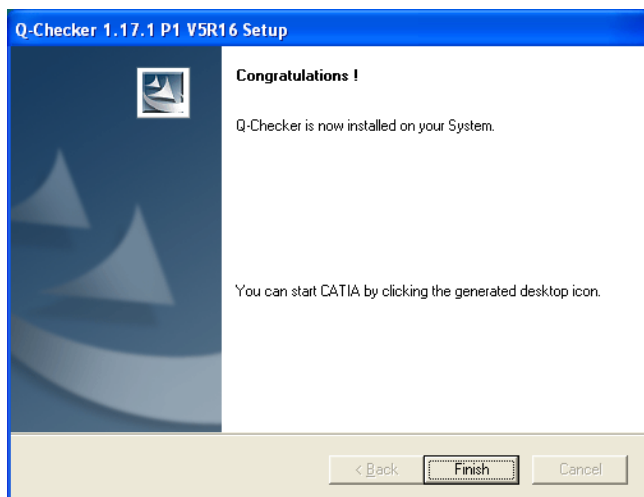


When the installation is accomplished, it is recommended to check up the adapted CATIA environment.

Reason: Some circumstances (write protection, very complex CATIA environment etc.) might have affected the adaptation.

## • Completion of the installation routine

When installing is accomplished, the following message is edited.



Confirm this message by clicking the *Finish* button.

For the newly-created CATIA environment, now on your desktop an icon is available with the environment name, you have just entered. With this icon, you can start CATIA with integrated Q-CHECKER workbench.



Manual Q-CHECKER installation using zip file

If you don't want to install Q-CHECKER via `setup.exe`, as described above, you can as an alternative perform a manual installation, using the zip file. This might be necessary e.g. in case of server installation. Further information about this installation you can find in the document

`Product_Installation_using_ZIP-archive.pdf` that you can download from the Q-CHECKER download site [www.transcat-plm.com/tcPLM/sw/download/d\\_qV5.htm](http://www.transcat-plm.com/tcPLM/sw/download/d_qV5.htm).

## 2.2 Deinstallation



### Steps

To uninstall Q-CHECKER, follow these steps:

- (1) In the Start menu select  
*Settings > Control Panel > Add/Remove Programs.*
- (2) Select Q-CHECKER and press the *Add/Remove...* button.

For detailed information about directories and the different files please see chapter 3 *Installing under UNIX* on page 12.

## 3. Installing under UNIX

### 3.1 Unpacking Files



#### Steps

The unpacking operation comprises several steps. Depending on the format of your files, steps can be skipped.

(1) If the data is available as `qcheckerV5_1192.tgz`, proceed as follows:

Action	OS <sup>1</sup>	Example
Rename tar archive	*	<code>mv qcheckerV5_1192.tgz qcheckerV5_1192.tar.gz</code>

<sup>1</sup> Note: \* stands for any CATIA V5-UNIX operation system

Continue with workstep (2).

(2) If the data is available as `qcheckerV5_1192.tar.gz` file, proceed as follows:

Action	OS <sup>1</sup>	Example
Copy tar archive into an installation directory of choice.	*	<code>cp qcheckerV5_1192.tar.gz /catdat/tcsoft</code>
Change directory to the installation directory	*	<code>cd /catdat/tcsoft</code>
Unpack the archive file	*	<code>gzip -d -c qcheckerV5_1192.tar.gz   tar -xvf -</code>



#### NOTE:

Unpack the compressed `*.gzip` file in a UNIX system and not under WINDOWS. Some of the WINDOWS packers during unpacking corrupt the content of the `*.gzip`, so that it can no more be used under UNIX.

## 3.2 The Created Directory Structure

Directory	OS <sup>1</sup>	Description
qcheckerV5_1.19.2/load/aix_a	AIX	Program modules for AIX
qcheckerV5_1.19.2/load/irix_a	SGI	Program modules for SGI
qcheckerV5_1.19.2/load/hpux_b	HP	Program modules for HP
qcheckerV5_1.19.2/load/solaris_a	SUN	Program modules for SUN
qcheckerV5_1.19.2/nedit/	*	Editor
qcheckerV5_1.19.2/KweQChecker	*	Q-CHECKER checks as knowledgeware
qcheckerV5_1.19.2/docV5/lang_DE	*	PDF Product documentation in German
qcheckerV5_1.19.2/docV5/lang_EN	*	PDF Product documentation in English
qcheckerV5_1.19.2/docV5/lang_JP	*	PDF Product documentation in Japanese
qcheckerV5_1.19.2/docV5/lang_FR	*	PDF Product documentation in French
qcheckerV5_1.19.2/htmlV5/lang_DE	*	HTML online-help in German
qcheckerV5_1.19.2/htmlV5/lang_EN	*	HTML online-help in English
qcheckerV5_1.19.2/htmlV5/lang_JP	*	HTML online-help in Japanese
qcheckerV5_1.19.2/htmlV5/lang_FR	*	HTML online-help in French
qcheckerV5_1.19.2/adminV5/<Environment>	*	Administration files and check profiles <sup>2</sup>
qcheckerV5_1.19.2/adminV5/<Environment>/plugin/KweQCheckerPlugin	*	Knowledgeware plug-ins (if used) <sup>2</sup>
qcheckerV5_1.19.2/adminV5/<Environment>/structure	*	Start model <sup>2</sup>
qcheckerV5_1.19.2/adminV5/<Environment>/db	*	Database directory <sup>2</sup>
qcheckerV5_1.19.2/qcheckerV5	*	Start script
qcheckerV5_1.19.2/readmeV5.txt	*	Up-to-date program information and modifications
qcheckerV5_1.19.2/QCHECKER.in	*	Example for batch input file
qcheckerV5_1.19.2/QCheckerEnv.csh	*	C-Shell script to expand an existing environment
qcheckerV5_1.19.2/QCheckerEnv.sh	*	Shell script to expand an existing environment
qcheckerV5_1.19.2/QCheckerSetEnv.sh	*	Shell script to create a new environment

<sup>1</sup> Note: \* stands for any CATIA V5-UNIX operation system

<sup>2</sup> <Environment\*> stands for the environment name. Q-CHECKER is delivered with one environment named „Default“.

## 3.3 Adapting Q-CHECKER to the Local CATIA Installation

There are two ways to adapt Q-CHECKER to the local installation:

- (1) Creating a new CATIA environment with automatic creation of a CATIA Q-CHECKER icon in the application manager (see chapter 3.3.1).
- (2) Expanding an existing CATIA environment (see chapter 3.3.2).

### 3.3.1 Creating a New CATIA Environment

To create a new CATIA environment with the Q-CHECKER software the shell script `QCheckerSetEnv.sh` is delivered.

In the following, you will find an excerpt from this file. Adapt in this file the passages marked **gray** to the realities of your local Q-CHECKER installation. Further information you can find in the following subchapters.

```
...
# Name of the new environment
QCHECKER_ENV="CATIA_QCHECKER"
#
# Store the new environment in this directory
QCHECKER_ENV_PATH="/transcat/catiav5r14/CATEnv"
#
# Installation directory of Q-Checker
QCHECKER_INSTALLATION="/catdat/tcsoft/qcheckerV5_1.19.2"
#
# Catia installation directory
CATIA_INSTALLATION="/usr/catiav5r14"
#
...
#
chcatenv -e $QCHECKER_ENV -d $QCHECKER_ENV_PATH -var
                QCPATH=${QCHECKER_INSTALLATION} -new
chcatenv -e $QCHECKER_ENV -d $QCHECKER_ENV_PATH -var
                QCDOC=${QCHECKER_INSTALLATION}/docV5 -new
chcatenv -e $QCHECKER_ENV -d $QCHECKER_ENV_PATH -var
                QHTML=${QCHECKER_INSTALLATION}/htmlV5 -new
chcatenv -e $QCHECKER_ENV -d $QCHECKER_ENV_PATH -var
                QCLOAD=${QCHECKER_INSTALLATION}/load/$OSDS/code/bin -new
chcatenv -e $QCHECKER_ENV -d $QCHECKER_ENV_PATH -var QCADMIN=${QCHECKER_INSTALLATION}/adminV5 -new
chcatenv -e $QCHECKER_ENV -d $QCHECKER_ENV_PATH -var
                QCUSER=\$USER_HOME/qcuserV5 -new
chcatenv -e $QCHECKER_ENV -d $QCHECKER_ENV_PATH -var
                QCREPORT=\$USER_HOME/qcreportV5 -new
chcatenv -e $QCHECKER_ENV -d $QCHECKER_ENV_PATH -var
                QCLICDB=NO -new chcatenv -e
...
#
setcatenv -e $QCHECKER_ENV -d $QCHECKER_ENV_PATH -p $CATIA_INSTALLATION:$QCHECKER_INSTALLATION/load
                -new yes -desktop yes -a global \
&& change_cat_env || echo "\aCreating the environment failed."
```



*NOTE:*

If you install on your computer both Q-CHECKER V4 and V5 version, you should create separate user and report directories for each version.

If the `QCHECKER.usr` files and the check reports are stored in separate directories

(e.g. `\$USER_HOME/qcuserV4` and `\$USER_HOME/qcuserV5`), this will facilitate to distinguish between the different report files and will prevent that files accidentally will overwrite one another.

### 3.3.1.1 Adapting the Declarations to the Existing Directories

Adapt the following Q-CHECKER variables to your local directory structure. The specifications in the example above are only an example.

Variable name	Explication	
QCHECKER_ENV	Name of the new CATIA environment	
QCHECKER_ENV_PATH	Path where the CATIA environment file is created	
QCHECKER_INSTALLATION	Installation path of Q-CHECKER	
CATIA_INSTALLATION	Installation path of CATIA V5	
QCPATH	Installation path of Q-CHECKER (identical with the variable QCHECKER_INSTALLATION)	
QCDOC	Path for the Q-CHECKER documentation files	
QCHTML	Path for the Q-CHECKER HTML online-help	
QCLOAD	Path for the Q-CHECKER load modules	
QCADMIN	Path for the Q-CHECKER administrator files	
QCUSER	Path for storing the user profiles	
QCREPORT	Path for storing the report files	
QCLICDB	Q-CHECKER license declaration (see chapter 3.3.2.2 on page 20)	
QCLANGCAT	YES	<ul style="list-style-type: none"> <li>CATIA language is taken over as Q-CHECKER language. German, French and English languages are supported.</li> </ul>
	NO	<ul style="list-style-type: none"> <li>The language selection is made in the Q-CHECKER options dialog box.</li> </ul>
QCHECKER_EDM_PATH	Path setting for the QCHECKER_EDM_SAVE keyword.	
QCHECKER_EDM_SAVE	Controlling an inquiry prompt asking about saving of models that have been processed by an EDM system.	
	1	An inquiry prompt is displayed whether the processed model is to be saved or not. <ul style="list-style-type: none"> <li>If with the keyword QCHECKER_EDM_PATH a path has been specified, the inquiry prompt is displayed only if the respective model was taken from the specified path.</li> <li>If with the keyword QCHECKER_EDM_PATH no path was specified, the inquiry prompt is displayed in every case.</li> </ul>
	0	Q-CHECKER works as normal—no inquiry prompt is displayed.



#### NOTE:

In the standard installation, the QCADMIN path is user independent. The files in this directory can be used by all users. As QCUSER and QCREPORT path should used the home directory of the respective user, since the files in this directory are user dependent and should be separate for each user.

### 3.3.1.2 Q-CHECKER License Declaration

The product Q-CHECKER consists of 2 modules. In the CATIA environment file, it is specified which license is to be used when starting the program. Depending on the license acquired, set the variable `QCLICDB` in the following table to *YES* or *NO*, as shown in the following table.

Product name	QCLICDB
TC-qcheckerV5	NO
TC-qcheckerV5-DB	YES

For the product name, please, refer to the license document received from TRANSCAT PLM.

### 3.3.1.3 Specifying the Action Options

To generate CATIA environments, different options are available:

Variable	Value	Description
-new	YES	An already existing environment with the same name will be overwritten. (Recommended)
	NO	An already existing environment with the same name will not be overwritten, the existing environment remains.
-desktop	YES	Generates a desktop icon of the environment. (Recommended)
	NO	No desktop icon of the environment is generated.
-a	GLOBAL	A global environment will be created. (Recommended) Note: To create a global environment you must have the administrator rights.
	USER	A user environment will be created.

### 3.3.1.4 Creating an Environment



To create the above defined CATIA environment, execute the `QCheckerSetEnv.sh` shell script.

Steps	OS <sup>1</sup>	Example
(1) Go to the installation directory	*	<code>cd /catdat/tcsoft/qcheckerV5_1.19.2</code>
(2) Execute the script		<code>./QCheckerSetEnv.sh</code>

<sup>1</sup> Note: \* stands for any CATIA V5-UNIX operation system



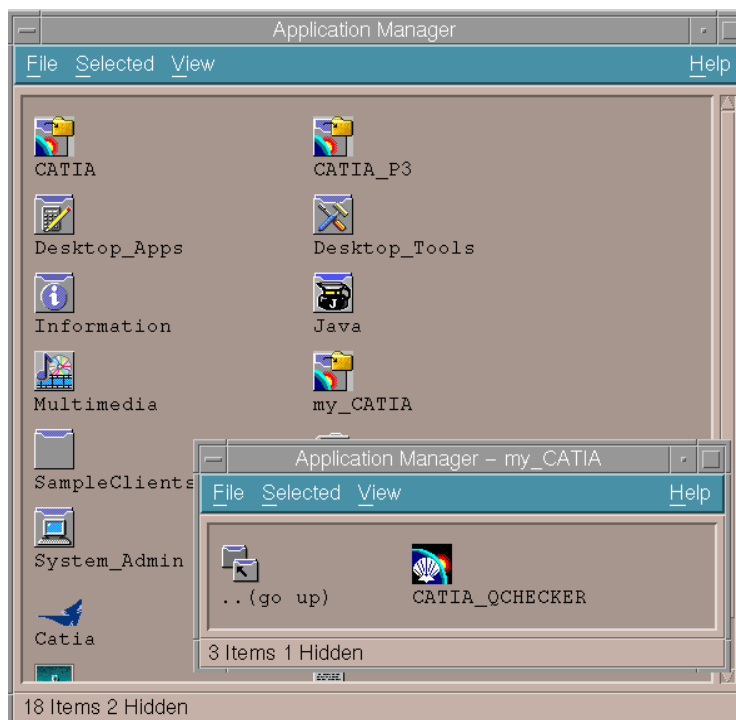
#### NOTE:

To create a global environment, you must have administrator rights.



#### NOTE:

The CATIA—Q-CHECKER icon (see the following screenshot) is displayed in the `my_CATIA` folder of the Application Manager only after re-log in.



Continue the installation with the chapter 3.3.3 *Adapt "qcheckerV5" Start Script* on page 22.

### 3.3.2 Expanding an Existing CATIA Environment

To expand an existing CATIA environment, with Q-CHECKER the shell scripts `QCheckerEnv.sh` and `QCheckerEnv.csh` are delivered.

In the following, we give an extract of this file. Adapt in this file the passages marked gray to your local Q-CHECKER installation. For further information, please refer to the following subchapters.

```
set +u
QCPATH=/catdat/tcsoft/qcheckerV5_1.19.2
\export QCPATH
QCDOC=${QCPATH}/docV5
\export QCDOC
QCHTML=${QCPATH}/htmlV5
\export QCHTML
QCLOAD=${QCPATH}/load/$OSDS/code/bin
\export QCLOAD
QCADMIN=${QCPATH}/adminV5
\export QCADMIN
QCUSER=$USER_HOME
\export QCUSER
QCREPORT=$USER_HOME
\export QCREPORT
QCLICDB=NO
\export QCLICDB
QCCAA=${QCPATH}/load/$OSDS
\export QCCAA
```



**NOTE:**

If you install on your computer both Q-CHECKER V4 and V5 version, you should create separate user and report directories for each version.

If the `QCHECKER usr` files and the check reports are stored in separate directories (e.g. `$USER_HOME/qcuserV4` and `$USER_HOME/qcuserV5`), this will facilitate to distinguish between the different report files and will prevent that files accidentally will overwrite one another.

### 3.3.2.1 Adapting the Declaration to the Local Directories

The values shown in the example file above are given only as an example; please adapt them to your local realities.

Entity name	Description
QCPATH	Q-CHECKER installation path
QCDOC	Path for the Q-CHECKER documentation files
QCHTML	Path for the Q-CHECKER HTML online-help
QCLOAD	Path for the Q-CHECKER load modules
QCADMIN	Path for the Q-CHECKER administrator files
QCUSER	Path for storing the user profiles
QCREPORT	Path for storing the report files
QCLICDB	Q-CHECKER license declaration (see chapter 3.3.2.2 on page 20)
QCLANGCAT	YES <ul style="list-style-type: none"> <li>CATIA language is taken over as Q-CHECKER language. The supported languages are German, French and English.</li> </ul>
	NO <ul style="list-style-type: none"> <li>The language selection is made in the Q-CHECKER options dialog box.</li> </ul>



#### NOTE:

In the standard installation, the QCADMIN path is user independent. The files in this directory can be used by all users.

As QCUSER and QCREPORT path should use the home directory of the respective user, since the files in this directory are user dependent and should be separate for each user.

### 3.3.2.2 Q-CHECKER License Declaration

In addition to Q-CHECKER a second module is available, assuming the database connection. For that reason it must be defined in the CATIA environment file if the database connection is to be enabled or not. Depending on the license you have acquired, please set the values of the following variables on the value *YES* or *NO*, as shown in the table:

Product	License name	Value for QCLICDB
Q-CHECKER	TC-qcheckerV5	NO
Q-CHECKER DATABASE CONNECTION	TC-qcheckerV5-DB	YES

As default value of the variable in the CATIA environment file *YES* is set (for the “TC-qcheckerV5” product).

Please take the license name from the license certificate, received from TRANSCAT PLM or your Q-CHECKER reseller. You can find the license name also at the end of the license mail, sent by TRANSCAT PLM.

### 3.3.2.3 Starting CATIA with the Q-CHECKER Environment



To integrate Q-CHECKER in an already existing CATIA environment, you have to start CATIA as follows:

Steps	OS <sup>1</sup>	Example
(1) Set CATIA environment (here: CATIA default environment)	*	<code>./transcat/catiav5r14/CATEnv/CATIA_P3.V5R14.B14.sh</code>
(2) Set Q-CHECKER environment	*	<code>./catdat/tcsoft/qcheckerV5_1.19.2/QCheckerEnv.sh</code>
(3) Start CATIA	*	CNEXT

<sup>1</sup> Note: \* stands for any CATIA V5-UNIX operation system

Continue the installation with the chapter 3.3.3 *Adapt “qcheckerV5” Start Script* on page 22.

### 3.3.3 Adapt “qcheckerV5” Start Script

In the start-script, please adapt the `QCHECKER_PATH` directory name marked **gray** to your local installation.

```
#!/bin/ksh
#-----
#
#           Q-CHECKER
#           (C) TransCAT PLM GmbH & Co. KG
#
#           Am Sandfeld 11c
#           76149 Karlsruhe
#           Tel.: +49-721-9 70 43 - 0
#-----
#
# Set the path name or the directory where the QCHECKER and
# the load modules are installed.
#
# for example:
#
# export QCHECKER_PATH          = "/catdat/tcsoft/qcheckerV5"
# export QCHECKER_LOAD_PATH    = "$QCHECKER_PATH/load/$CATIA_OS"
#-----
#
export QCHECKER_PATH="/catdat/tcsoft/qcheckerV5_1.19.2"
export QCHECKER_LOAD_PATH="$QCHECKER_PATH/load/${CATIA_OS}"
export QCHECKER_LOAD_JAVA="$QCHECKER_PATH/load/"
...

qchecker_show_pdq ()
{
# Enter the program and document that should be displayed when clicking on
# the PDQ help icon on the Q-Checker start panel. This functionality is
# optional and not required to run Q-Checker! Example:
# netscape "/catdat/tcsoft/qcheckerV5_1.19.2/docV5/pdq_help.html" &
# acroread "/catdat/tcsoft/qcheckerV5_1.19.2/docV5/pdq_help.pdf" &
```

## 4. Language Selection

The Q-CHECKER supports German (*DE*), English (*EN*), French (*FR*) and Japanese (*JP*). An alteration of the selected language affects the user interface, the soft copy and the check reports.

### 4.1 Language Specification for the First Program Start

In the `QCHECKER.par` file, the language is specified, in which Q-CHECKER is opened on the first start.

```
qchecker.DEFAULT_LANGUAGE = DE   (for German)
qchecker.DEFAULT_LANGUAGE = EN   (for English)
qchecker.DEFAULT_LANGUAGE = FR   (for French)
qchecker.DEFAULT_LANGUAGE = JP   (for Japanese)
```

See also the Q-CHECKER user manual—section *Administration*—subchapter `QCHECKER.par file`.

#### 4.1.1 Language Selection by the User

While starting Q-CHECKER for the first time, the `QCHECKER.usr` file is created. In this file, the user-specific settings are stored (among others, the language setting). This file is stored, if no other settings have been made, in the home directory of the respective user.

The language setting in this file is made with the variable

```
qchecker.USER_LANGUAGE .
```

The value of this variable can be changed manually in the file by the means of an editor. The selected language will be applied after saving this file and restarting Q-CHECKER.

The language setting also can be changed interactively by the user, using the Q-CHECKER *Options* menu. To apply the change in the language selection, in this case too, Q-CHECKER needs to be restarted. For the interactive language selection by the user see also Q-CHECKER User Manual—chapter “Administration”, subchapter “`QCHECKER.usr`—User Settings”.

## 5. Installation of License Passwords

TRANSCAT PLM uses for Q-CHECKER the license system *LUM*, which is also used for CATIA licensing. TRANSCAT PLM offers two types of licenses:

License type	Description
<i>Nodelock</i>	License for on one only computer (license bound to the CPU ID)
<i>Concurrent</i>	License is available in the network. A license server is needed.



### NOTE:

A license can be entered:

- on a UNIX workstation only by the root user,
- on PC only by users, having administrator rights.

### 5.1 License Request

To ensure a fast and errorless processing of your license request, we ask you to request your license on the following website:

<http://www.q-checker.com/license>

The CPU ID will be output if you enter one of the following commands:

Platform	Command	Example of a CPU ID
AIX	<code>uname -m</code>	009481814C00
AIX on p5-Series workstations	<code>/usr/opt/ifor/ls/bin /i4target -O</code>	9481768C
IRIX (FLEXlm host ID)	<code>lmhostid</code>	6909b894
HP-UX (Permanent Target ID)	<code>/var/lum/i4target</code>	ffff28ea
SOLARIS	<code>hostid</code>	807fe3ee
WINDOWS (win32mac)	<code>i4target</code>	5DDE26F2
LINUX (MAC/LLA Address)	<code>i4target -O</code>	557cd770
CLUSTER	<code>i4blt -H s -N cluster_name</code>	9c1bb2a7e1a8.8d.41.d1.9c.4c .00.00.00

## 5.2 Installation of Nodelock Licenses

In the `nodelock` file, the *Nodelock* password must be entered, using a text editor. The `nodelock` file is situated platform-dependent in one of the following directories:

IBM:	<code>/var/ifor</code>
HP:	<code>/var/lum</code>
SGI:	<code>/var/lum</code>
SUN:	<code>/var/lum</code>
WINDOWS 2000/XP:	<code>c:\Documents and Settings\All Users\Application Data\IBM\LUM</code>



### Enrolling a Nodelock license under UNIX

Action	OS <sup>1</sup>	Entries
(1) Log in as root user	*	<code>su - root</code>
(2) Go to the password directory	AIX	<code>cd /var/ifor</code>
	IRIX	<code>cd /var/lum</code>
	HP	<code>cd /var/lum</code>
	SUN	<code>cd /var/lum</code>
(3) Create or edit the <code>nodelock</code> file	*	<code>vi nodelock</code>
(4) Add new lines at the end ( <code>vi</code> command)	*	<code>&lt;ESC&gt;Go</code>
(5) Enter the password text	*	(see text below the table)
(6) Save the file ( <code>vi</code> command)	*	<code>&lt;ESC&gt;wq</code>
(7) Specify the file permissions	*	<code>chmod 644 nodelock</code>

<sup>1</sup> Note: \* stands for any CATIA V5-UNIX operation system

#### Inserting password text

In the license e-mail received from TRANSCAT PLM, you will find a text analog to that in the following example:

Copy the following 2 lines into your `nodelock` file:

```
# TransCAT: TC-qcheckerV5, Version 1.x, gueltig bis 31.12.2037
7db765b90080.02.81.96.00.18.00.00.00 64tkq3wfwzxi2gzci5j7t8p49keaa " " 1"
```

To enter the password in the file, copy these two lines beginning from the `#` sign (and including it) to your `nodelock` file.



## Enrolling a Nodelock license under WINDOWS

To enroll *nodelock* licenses under WINDOWS, open in the password directory (see on the [top of this chapter](#)) the *nodelock* file with any editor (e.g. WORDPAD).

If no *nodelock* file does yet exist, it must be created with an editor. Insert in the *nodelock* file the password text as described above for UNIX.



### NOTE:

The *nodelock* file has no name extension—neither under UNIX nor under WINDOWS. Most of editors automatically add to the file name an extension (e.g. *.txt*). If an extension has been added, it must be deleted—otherwise the file will be inoperative.

## 5.3 Installation of Concurrent Licenses

Concurrent licenses are generated for a specific license-server and are bound to its CPU ID.

The prerequisite is that a *LUM* license manager is installed, configured and active, so that you can enter the concurrent password text. To enroll the license keys of the *Concurrent* type, you can use: the *i4blt command line interface* (in all platform cases) or the *Graphic User Interface* (since LUM version 4.6.5 for WINDOWS and all UNIX platforms, previous LUM versions only for AIX and WINDOWS).

For detailed information see your LUM documentation—chapter 6 "Using License Use Management Runtime", which is delivered with your operating system.



### NOTE:

A license can be entered

- on a UNIX workstation only by the root user,
- on PC only by users, having administrator rights.

The tools and entries for the license manager are located in the following directories:

Operating System	Directory
IBM (AIX)	/usr/opt/ifor/bin
HP (HP-UX)	/var/lum
SGI (IRIX)	/var/lum
SUN (SOLARIS)	/var/lum
WINDOWS (2000/XP)	X:\ifor\WIN\BIN (X is the drive, on which LUM is installed)

## Enrolling a *Concurrent* license

For the registration three possibilities are available which will be described below.

- **Automatic registration**

If you have got the license certificate as attachment, we recommend the automatic registration.

In order to install the license, store the license file in a directory of your choice on the LUM server. Then enter the following command:

Command	Description
<code>i4blt -a -f filename</code>	,filename' stands for to the path and name of the license file.

- **Registration using the IMPORT function of the GUI *i4blt* version**

After starting the *GUI i4blt* version, the license certificate file can be read in and registered by the means of the IMPORT function.



### STEPS

- (1) Start *i4blt* Tool
- (2) Select *Products* menu item and go to the *single product ...* submenu.
- (3) In the *Enroll Product* window press the *Import* key
- (4) In the following *IMPORT* window select the *license certificate* and confirm with 'OK'.
- (5) After the return to the *Enroll Product* window conclude the registration pressing the *OK* button.

- **Manual registration with the *i4b/t* command line interface**

To enter the license use to following syntax:

```
i4btl -a -n Server-Name -v "VendorName [VendorID VendorPassword]"
-p "ProductName ProduktVersion ProductPassword"
```

(The text above is shown on the screen in one line.)

### Example:

```
i4btl -a -v "TransCAT 7db765b90080.02.81.96.00.18.00.00.00 ak9nui9b2ftjs" ##
-p "TC-qchecker 1 46pdi5veptf5wket9xriygptqpnaaaa"
```



### ATTENTION:

- The text must be entered in one line without line brake.
- The two number signs ## stand for 1 space sign.

Please take parameters for the keywords from your license certificate in analogy to the following example:

Note: The parameters in the example may differ from the parameters in your license certificate.

### Example:

```
# i4admin -a -v "TransCAT" 7db765b90080.02.81.96.00.18.00.00.00 chh5afnqs6jx6
# i4admin -a -p "TransCAT" "TC-qcheckerV5" vmbif9d3s3vfcttqcpaiv83ug2qsaaa "1"

[LicenseCertificate]
Checksum=D08CE54292F1ECE4720A49A52ADC70E1
TimeStamp=382196610
VendorName=TransCAT
VendorPassword=chh5afnqs6jx6
VendorID=7db765b90080.02.81.96.00.18.00.00.00
ProductName=TC-qcheckerV5
ProductID=5000
ProductVersion=1
ProductPassword=vmbif9d3s3vfcttqcpaiv83ug2qsaaa
ProductAnnotation=
LicenseStyle=concurrent
LicenseStartDate=02/05/2002
LicenseDuration=14214
LicenseEndDate=12/31/2037
LicenseCount=1
MultiUseRules=none
RegistrationLevel=3
TryAndBuy=No
SoftStop=No
TargetType=13
TargetTypeName=IBM AIX
TargetID=4fbf5a4c
```

## 6. Installing Check Profiles

To use Q-CHECKER, check profiles are needed, containing the definitions for the checks to be executed.

Users that execute Q-CHECKER checks in order to test CAT data to be transferred to an *OEM* (Original Equipment Manufacturer), can get the current check profiles from their OEM *or* by downloading them from the Q-CHECKER web side

[www.q-checker.com](http://www.q-checker.com).

The download is free of charge. Before the first download, the user must register (under *Registration*). Please, note your user name and password exactly, you will need them again for every log-in for download. The passwords being encrypted on the server, TRANSCAT PLM has no control over the passwords. If the password once would be lost, a new registration will be required.

If download problems should occur or if the needed check profiles are not available on the web side, please address directly to TRANSCAT PLM:

[q-checker@transcat-plm.com](mailto:q-checker@transcat-plm.com)



### Steps

The unpacking operation comprises three steps. Depending on the format of your files, the steps (1) and/or (2) can be skipped.

- (1) If the profile file is available as packed and compressed \*.taz file, do first the following operation:

Action	OS <sup>1</sup>	Example
Rename the tar archive	*	mv *.taz *.tar.Z

<sup>1</sup> Note: \* stands for any CATIA V5-UNIX operation system

Continue with work step (2).

- (2) If the profile file is available as \*.tar.Z file, do the following operation:

Action	OS <sup>1</sup>	Example
Uncompress the tar archive	*	uncompress *.tar.Z

Continue with work step (3).

- (3) To conclude the profile installation, do the following operations (these actions are to be taken in every case):

Action	OS <sup>1</sup>	Example
Copy tar archive into the admin directory	*	<code>cp *.tar ../qcheckerV5_1.19.2/adminV5</code>
Go to the admin directory	*	<code>cd ../qcheckerV5_1.19.2/adminV5</code>
Unpack the archive file	*	<code>tar -xvf *.tar</code>

<sup>1</sup> Note: \* stands for any CATIA V5-UNIX operation system

While unpacking the profile archive, a new environment directory is created and the corresponding files are copied in the target directories. The new environment will be available after Q-CHECKER restart; the check-profiles in it will be available as standard profiles.

## 7. Troubleshooting

### Problem:

- Under WINDOWS, in CATIA the Q-CHECKER icon is available, but Q-CHECKER can not be started.
- No Q-CHECKER icon in CATIA.
- Under WINDOWS Q-CHECKER set-up aborts.
- Under UNIX, Q-CHECKER can not be started.
- Q-CHECKER license can not be found.

### For solution see:

- [Problem 1—page 31](#)
- [Problem 2—page 32](#)
- [Problem 3—page 33](#)
- [Problem 4—page 34](#)
- [Problem 5—page 35](#)



### PROBLEM 1

- *SYMPTOM*

Under WINDOWS, in CATIA the Q-CHECKER icon is available, but Q-CHECKER can not be started.

- *CAUSE*

The `qcheckerV5.vbs` start script is a VISUALBASIC (VB) script. Virus scanners can block VB scripts.

- *SOLUTION*

Check out if the problem is caused by a virus scanner. If appropriate, change the configuration of the virus scanner.



## PROBLEM 2

- *SYMPTOM*

No Q-CHECKER icon in CATIA.

- *POSSIBLE SOLUTIONS*

- Prerequisite not fulfilled: CATIA configurations MD2 + SA2 + PM2 and PX1 package must be installed.
- CATIA has been started with wrong CATIA environment where Q-CHECKER is not included.
- Wrong Q-CHECKER release (e.g. Q-CHECKER for R14, but CATIA R16 installed).
- Icon hidden.  
Check in CATIA if the *QCheckerTB* tool bar is activated.  
(Menu *View > Toolbars > Customize > Commands* tab card > Select on the value list on the left *All Commands*, and search in the box on the right in the displayed list for Q-CHECKER)
- Check whether the Q-CHECKER icon is available when an other type of CATIA document is loaded (CATProduct, CATPart, CATDrawing).
- Check whether the Q-CHECKER icon appears if the CATIA „PartDesign“ workbench is active.
- Delete all CATSettings and restart CATIA.



## PROBLEM 3

- *SYMPTOM*

Under WINDOWS Q-CHECKER set-up aborts.

- *REASON*

The Windows registry didn't contain keywords under  
HKEY\_LOCAL\_MACHINE\SOFTWARE\Dassault Systemes\B12\0

The keyword DEST\_FOLDER must point to the CATIA installation directory.

The keyword DEST\_FOLDER OSDS must point to the CATIA installation directory  
\intel\_a

- *SOLUTION*

(1) Add/modify the keywords/values in the registry.

(2) Re-install CATIA from CD.



## PROBLEM 4

- *SYMPTOM*

Under UNIX, Q-CHECKER can not be started.

Error message: *Can't find libCATGeometricObjects.a*.

- *SOLUTION*

Export the LIBPATH in the qcheckerV5 script file (see red line in the extract of the qcheckerV5 file).

The echo \$LIBPATH command (line in blue) is destined only for verification and can be erased when the problem is solved.

### Extract of the qcheckerV5 file

```

#-----
#
# Call the Q-CHECKER catia
#
#-----
if [ "${1}" = "-c" ]; then
if [ "${OSDS}" = "aix_a" ]; then
# replace dead_circumflex by asciicircum for QT
export DEAD_CIRCUM_KEY=`xmodmap -pke | grep dead_circumflex | head -1`
xmodmap -e "`echo ${DEAD_CIRCUM_KEY} | sed -e s/dead_circumflex/asciicircum/g`"

# replace dead_tilde by asciitilde for QT
export DEAD_TILDE_KEY=`xmodmap -pke | grep dead_tilde | head -1`
xmodmap -e "`echo ${DEAD_TILDE_KEY} | sed -e s/dead_tilde/asciitilde/g`"
fi

export LIBPATH=/usr/catiav5r12/B12/aix_a/code/bin:$LIBPATH
echo $LIBPATH

    "${QCHECKER_LOAD_PATH}"/TCAQChecker -c "${2}"

if [ "${OSDS}" = "aix_a" ]; then
xmodmap -e "`echo ${DEAD_CIRCUM_KEY}`"
xmodmap -e "`echo ${DEAD_TILDE_KEY}`"
fi

    exit

fi
#-----

```



## PROBLEM 5

- *SYMPTOM*

Q-CHECKER license can not be found.

- *VERIFYING THE PROBLEM*

The license problem can be verified, using the TCALIC program. It simulates the Q-CHECKER license mechanism and allows to get granted LUM licenses and to release them. In order to get granted the license, the program searches first for a *nodelock* license. If no *nodelock* license can be found, then in the network for a *Concurrent* license is searched. If available; the license is drawn.

The TCALIC program is located in Q-CHECKER directory `.../load/<operating system>/code/bin`.

In order to execute TCALIC, in a UNIX shell on a client computer enter the following command

```
TCLIC <Product ID> <Product Version>      (Sample)
```

```
TCLIC 5000 1      → Example for the case that you have the TC-qcheckerV5 license;
```

```
TCLIC 5001 1      → Example for the case that you have the TC-qcheckerV5-DB license.
```

If you don't know which license do you have, refer to the license certificate or to the *Basic License Tool* (in case of network licenses).



**NOTE:**

To be able to use Q-CHECKER with database connection, i. e. in connection with Q-MONITOR, both *TC-qcheckerV5* and *TC-qcheckerV5-DB* licenses are required.

The program output is as follows:

```
*****
catadm-rsprog10:/catdat/tcsoft/qcheckerV5_1.16.2/load/aix_a/code/bin>TCALIC 5000 1

TCLIC try to get license for:
=====

Product ID: 5000
Product Version: 1

Try to get NODELOCKED license

tc_i4_ini_c: >tc_i4_ini_c: License not found in the database.<

License not granted
=====

Try to get CONCURRENT license

License granted
=====

Type q to release the license
*****
```

In the example above the program searched for Q-CHECKER for CATIA V5 license. The check resulted in no *nodelocked* license be found (*License not granted*). The subsequent search for a *Concurrent* license was successful, the license could be drawn (*License granted*). The license may be released again by pressing the  key (as soon as you have been invited by TCALIC to do this).

- **POSSIBLE SOLUTIONS**

Verify:

- Is the license key registered correctly?  
See section 5 *Installation of License Passwords* from page 24.
- Are the license settings in the CATIA environment file made correctly?  
If you do you not have a *TC-qcheckerV5-DB* license, set the following value for the QCLICDB database parameter: NO .

\* \* \*

**Q-CHECKER in the Internet:**

<http://www.q-checker.com>

**Q-CHECKER hotline:**

Phone: +49 721 97043100

E-mail: [q-checker@transcat-plm.com](mailto:q-checker@transcat-plm.com)

