



Q-CHECKER V2.14.1  
FOR CATIA V5




INSTALLATION GUIDE



## Updates to this manual

For every release of Q-CHECKER Transcat PLM provides updated manuals. The updates cover newly added functions and may contain revised descriptions of previously introduced functions.

## Using this PDF manual

- For direct access to sections in this manual you can use the *Bookmarks* tab of your PDF reader (e.g. ADOBE READER).
- When the mouse pointer  changes to , you can follow the cross-reference given in the text. Press the  button in the navigation toolbar of Adobe Reader to return to the previous view.
- For better clarity you can split the page view in ADOBE READER (menu item *Window > Split*). That way you can view different sections of the manual in parallel, e.g. a screenshot and its associated parameters.

## Orientation symbols used in this manual

For better orientation in the manual the following symbols are used:



The warning triangle icon indicates *critical information* which is essential for avoiding or handling serious problems while working.



The light bulb icon indicates a *hint*, providing practical information from our experience to facilitate your work.



The hand icon indicates a *note* that helps you to avoid problems.



The info icon indicates *background information*.



The steps icon indicates *step-by-step instructions*.

TRANSCAT PLM on the internet:

<http://www.transcat-plm.com/>

Q-CHECKER on the internet:

<http://www.q-checker.com/>

Q-CHECKER hotline:

Phone: +49 721 970 43 100

E-Mail: [q-checker@transcat-plm.com](mailto:q-checker@transcat-plm.com)

TRANSCAT PLM GMBH © 2010

## Table of Contents

1	Hardware and Software Requirements .....	4
2	Installing and Uninstalling for Windows .....	6
2.1	Installing using the Windows Installation Package .....	6
2.2	Uninstalling the Installation Package .....	15
2.3	Installing Manually on Windows .....	16
2.4	Adapting the Q-Checker startup script .....	18
3	Installing for UNIX .....	20
4	Q-Checker Environment Variables and Directory Structure .....	27
4.1	Q-Checker Environment Variables .....	27
4.2	Directory Structure of a Q-Checker Installation .....	33
5	Language Selection .....	36
5.1	Language specification for the first program start .....	36
5.2	Language selection by the user .....	36
6	Enrolling licenses .....	37
6.1	License types .....	37
6.2	License request .....	37
6.3	Installation of Nodelock licenses .....	38
6.4	Installation of concurrent licenses .....	39
7	Installing Check Profiles .....	41
8	Troubleshooting .....	42

# 1 Hardware and Software Requirements

Hardware	Operation system
PC	MICROSOFT WINDOWS XP/XP x64 MICROSOFT WINDOWS VISTA x86/VISTA x64 MICROSOFT WINDOWS 7 (64 Bit)
IBM	AIX 5.3, AIX 6.1
HP	HP UX 11.11
SUN	SOLARIS 10

CATIA V5
<p><b>Version and Releases:</b> V5 R18 or later releases</p> <p><b>Platforms:</b> All CATIA platforms (P1, P2 and P3 and PLM EXPRESS) are supported.</p> <p>Depending on the CATIA platform, the following configuration packages must be installed and the following licenses must be available:</p> <p>CATIAP1 platform:</p> <ul style="list-style-type: none"> <li>• all configuration packages</li> <li>• at least MD1 license</li> </ul> <p>CATIAP2 platform:</p> <ul style="list-style-type: none"> <li>• at least EI2+MD2+PM2+SA2 configuration and PX1 product</li> <li>• at least MD2 license</li> </ul> <p>CATIA P3 platform:</p> <ul style="list-style-type: none"> <li>• on request</li> </ul> <p>In order to use the Q-CHECKER criterion <i>MML (Multi-Model Link) Reference Not Published</i> a PX1 license is required.</p>

For detailed software requirements refer to the CATIA Program Directory delivered with the CATIA software. Q-CHECKER is supported only on the same configurations on which the CATIA releases themselves are certified.

## Other Required Software

- HTML browser

An HTML-Browser such as MOZILLA FIREFOX or MICROSOFT INTERNET EXPLORER (version 5 or later) is required for viewing the HTML check protocols generated by Q-CHECKER.

Q-CHECKER can be configured to display the criteria online help in an internal browser or to call an external HTML browser.

- ADOBE ACROBAT READER, version 7.0 or later

In order to view or print the PDF manuals, ADOBE ACROBAT READER or an equivalent software is required.

## Supported Norms and Standards

- VDA Recommendation VDA 4955/2

## 2 Installing and Uninstalling for Windows

### 2.1 Installing using the Windows Installation Package



#### NOTE:

In some cases, e.g. when installing on a server, this installation routine cannot be used. Instead, you can manually install the software from a zip archive, as described in section 2.3 *Installing Manually on Windows*.



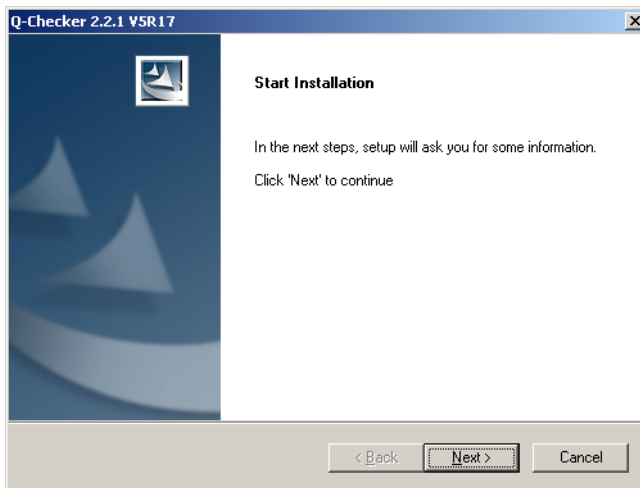
#### Installing Q-CHECKER

Insert the Q-CHECKER CD-ROM into the CD-ROM drive, or get the install package from the *Downloads* section on the Q-CHECKER website: <http://www.q-checker.com>.

Start the installation routine by double-clicking the file

- `qcheckerV5Rxx_2141_setup.exe` (32bit version) or
- `qcheckerV5RxxB64_2141_setup.exe` (64bit version)

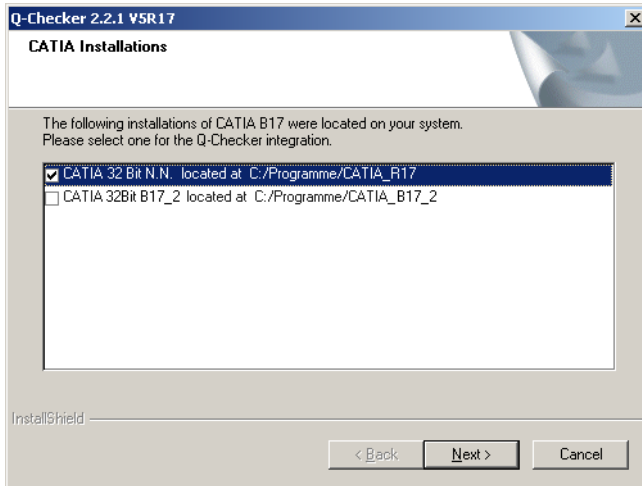
After starting the setup, the following screen is displayed:



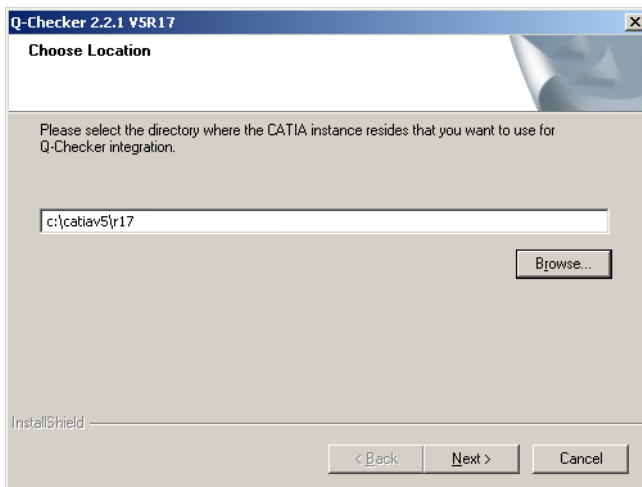
- To continue the installation, click the *Next* button after each of the following steps.
- To abort the installation at any time, click the *Cancel* button. All settings will be cancelled.
- To modify the settings you made in a previous step, click the *Back* button repeatedly until you reach the desired dialog.

## Selecting the CATIA version

The installation program looks up which versions of the respective CATIA release are installed on the computer. Select the required version.



If the installer has found no CATIA installation, the following dialog is displayed instead, where you can choose the installation directory manually:



Click the *Browse* button to choose a folder, or type the correct path into the text box.

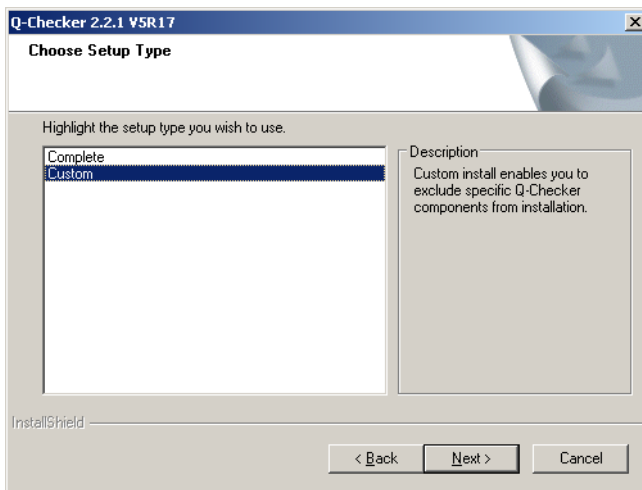
**HINT:**

The CATIA installation directory can be recognized by its subdirectory named `intel_a` (for 32-bit versions) or `win_b64` (for 64-bit versions).

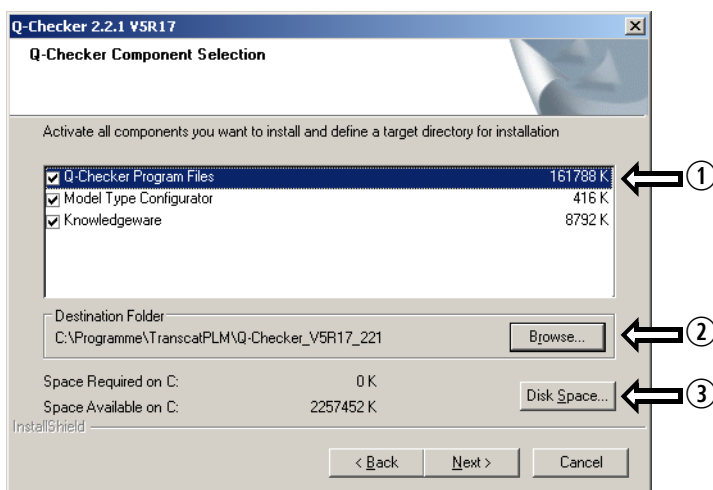
Example: If the desired installation of CATIA V5 64-bit contains the directory `c:\CATIA\V5R19\win_b64`, the location to be specified is `c:\CATIA\V5R19`.

## Choose the setup type

Select whether you wish to execute a *complete* or a *custom* installation.



To select the components to be installed manually, choose a *Custom* installation. Otherwise choose a *Complete* installation.



If you chose a custom installation, select the software components to be installed ①:

- Q-CHECKER Program Files: Q-CHECKER itself
  - Model Type Configurator: Utility to set and change the model type of CATIA models
- ↗ For details see the ADMINISTRATION MANUAL, Kapitel 10.4.6 *Model-Type Identification by Feature Attribute (FEATURE\_ATTRIBUTE)*, page 73.
- Knowledgware: Files preparing the use of Knowledgware (plug-ins).
- ↗ For further information see the ADMINISTRATION MANUAL, section 15 *Plug-ins*.

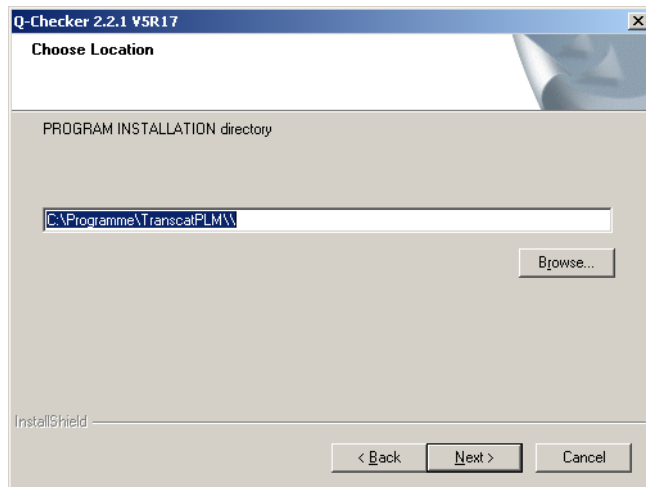
The installation directory for Q-CHECKER is displayed on the left ②. To choose a different directory, click the *Browse* button.

The available space on the selected drive is displayed in ③. Click the *Disk Space* button to display the space available on other drives.

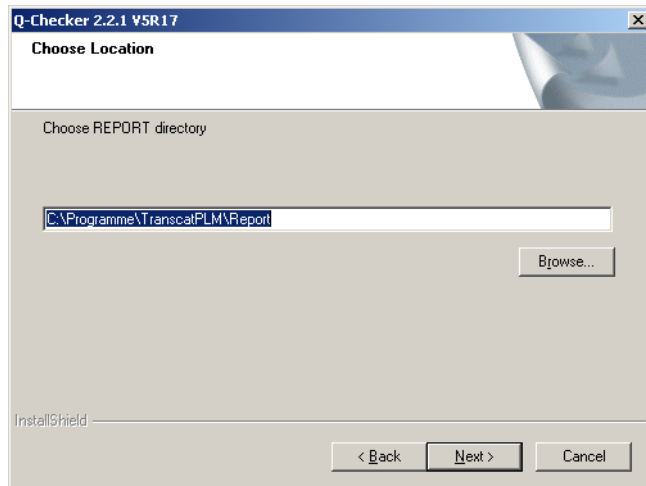
## Selecting the installation directory for the program files

Specify the installation directory in which to install the Q-CHECKER files.

- for Q-CHECKER itself  
(This dialog will not be displayed if there is already a Q-CHECKER custom installation for which the directory has been set.)



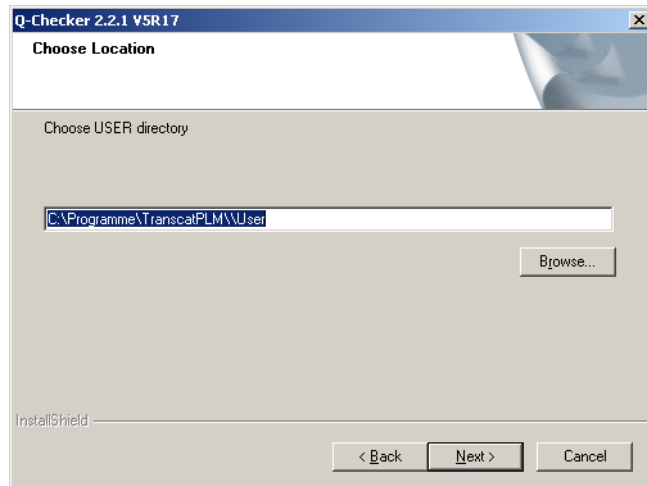
- for Q-CHECKER report files



**NOTE:**

This path can be modified afterwards in the CATIA environment file (variable QCADMIN).

- the Q-CHECKER user files



**NOTE:**

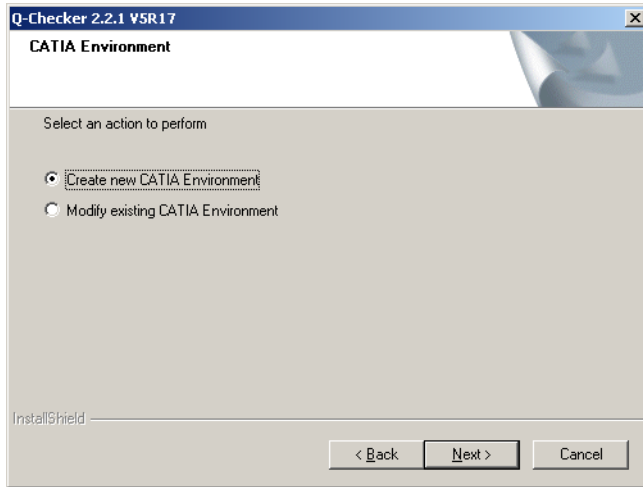
This path can be modified afterwards in the CATIA environment file (variable QCUSER).

## Setting the CATIA environment

To make Q-CHECKER available in CATIA, a CATIA environment must be prepared. Choose one of the options in the *Catia Environment* dialog:

- Create a new environment (recommended)

- Modify an existing environment in which Q-CHECKER will be integrated



If you choose the *Modify existing Catia environment* option, a file selection dialog shows the local environment directory for the respective CATIA version. Example: If you are installing Q-CHECKER for CATIA V5 R19, the environment directory for CATIA V5 R19 will be opened.

If necessary, choose a different directory and the CATIA environment file to be modified for use with Q-CHECKER. Click the *Open* button to confirm. Subsequently, the selected CATIA environment file will be adapted automatically.

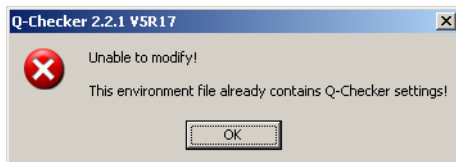


**NOTE:**

When the installation is finished, it is recommended to check the adapted CATIA environment.

In some cases, the modification of the environment may have failed, e.g. if it is write-protected or if the CATIA environment is very complex.

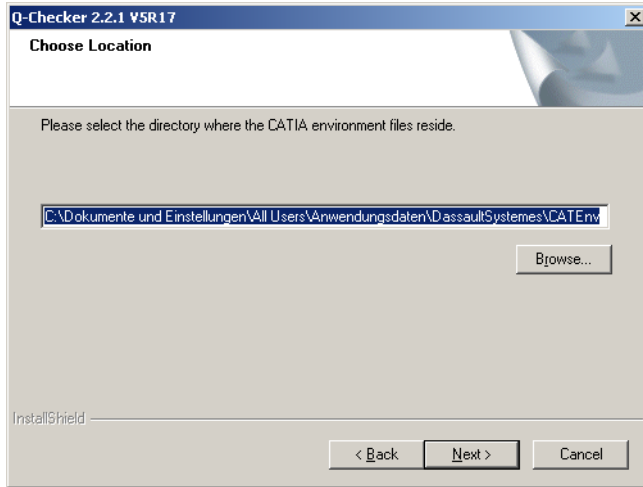
Modifications can be made only to environment files that do not yet contain Q-CHECKER variables. If the selected environment file already contains Q-CHECKER variables, an alert like the following will be displayed:



## Specifying the directory for the CATIA environment file

If you want a new environment to be placed in a different directory than the default directory, press the *Browse* button and select the desired directory from the dialog.

(This window will not be displayed if an existing environment file is to be modified.)



## Specifying the name of the CATIA environment file

You can adjust the name of the new CATIA environment file in the text box of the current dialog. We recommend to include the version numbers of both Q-CHECKER and CATIA in the name. Examples:

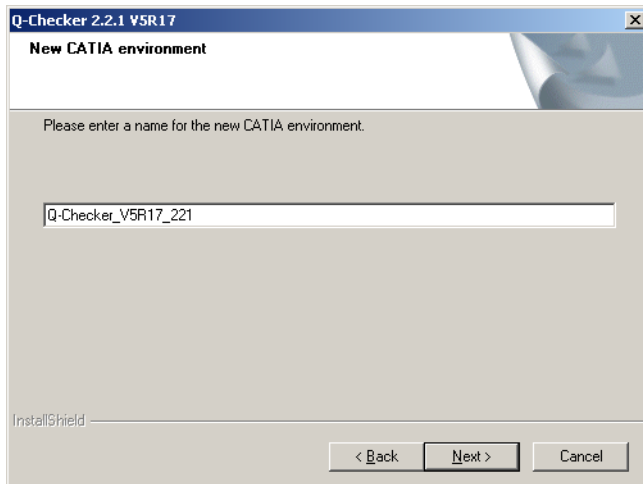
Q-Checker\_V5\_2141\_CatiaR19 or Q-Checker\_V5R19\_2141



### NOTE:

The name of the environment must not contain blanks.

This window is not displayed if you chose to modify an existing environment.



## Defining the database capability

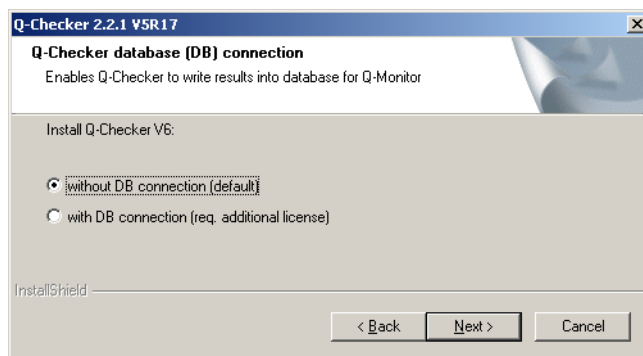
Select whether Q-CHECKER is to be installed with or without database connection.

- In case you work with Q-MONITOR and want to store the Q-CHECKER check results in a database, choose the *With DB connection* option.
- In all other cases, choose the *Without DB connection* option.

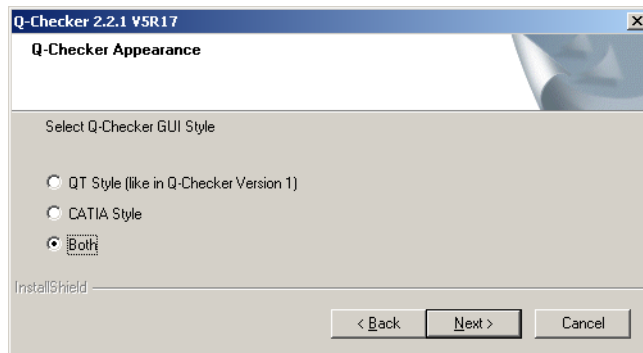


### NOTE:

The database connection requires an additional license, TC-qcheckerV5-db.



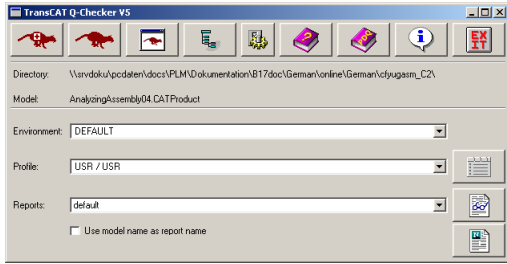
## Selecting the Q-Checker GUI



Choose the Q-CHECKER GUI to be used (cf. the screenshots below). If the selection is set to *QT Style* or *Catia Style*, Q-CHECKER can be opened only with the respective GUI. If *Both* is selected, Q-CHECKER can be started with either GUI.

QT GUI

Q-CHECKER Start Window

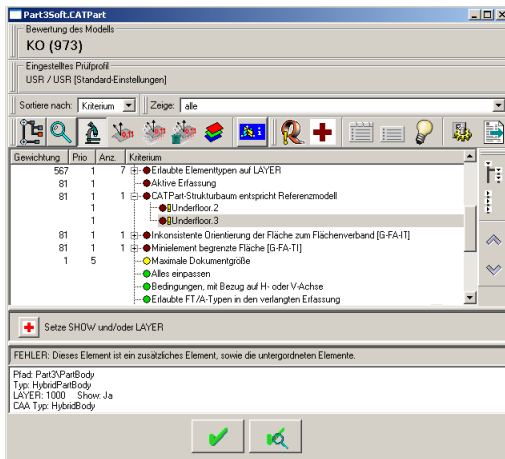


CATIA GUI

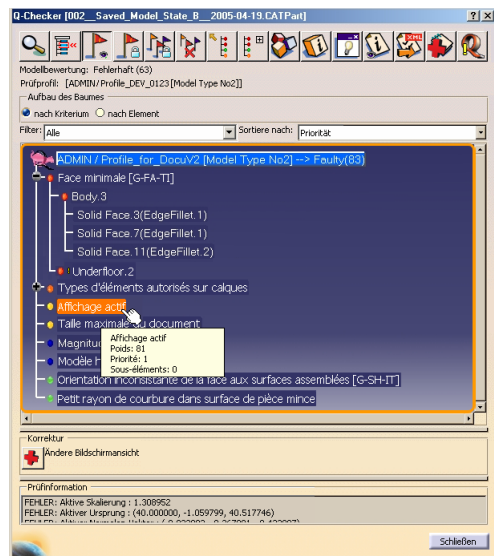
Q-CHECKER Start Window



Q-CHECKER Analysis Window

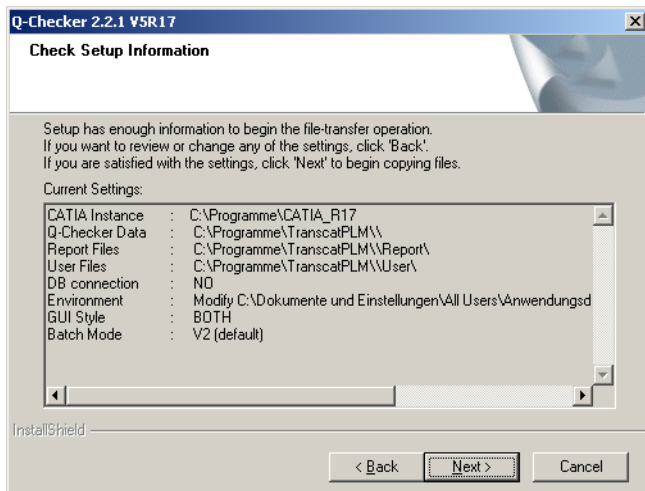


Q-CHECKER Analysis Window

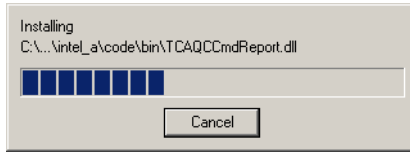


Completing the installation routine

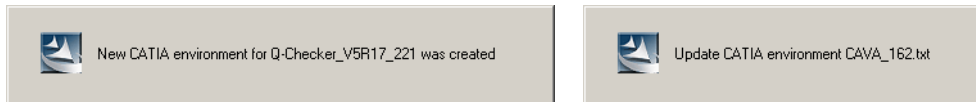
When all specifications have been entered, a summary is displayed in a dialog.



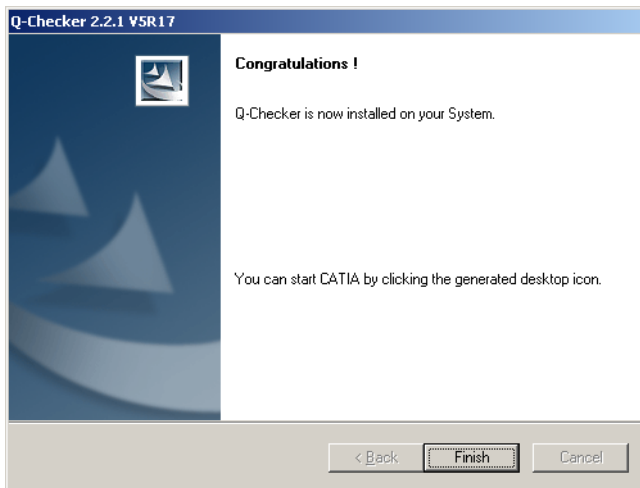
To install the software with the specified settings, click the *Next* button. The installation routine will then copy the required files to the installation directory.



At the end of the installation routine, the environment file will be created or modified, respectively.



The installation has been completed when the following dialog is displayed.



Confirm this message by clicking the *Finish* button.

When the installation is completed, on your desktop an icon is available with the name of the newly created CATIA environment. Clicking on this icon will start CATIA with integrated Q-CHECKER.

## 2.2 Uninstalling the Installation Package



### Uninstalling

- (1) In WINDOWS, click on the Start button, and select *Settings > Control Panel > Add/Remove Software*.
- (2) Select the Q-CHECKER entry from the list of installed software, and click the *Remove* button.
  - ↗ Further information on particular directories, the CATIA environment file and other files can be found in section 3 *Installing for UNIX* on page 20.

## 2.3 Installing Manually on Windows

A manual Q-CHECKER installation on WINDOWS is intended for cases in which the installation routine described in section 2.1 cannot be used. A typical use case is the installation on a server, where no local CATIA environment files are available for modification.

The files required for installation are available as a zip archive. Further adjustments have to be made manually.



### Installing Manually on WINDOWS

Download and unpack the files

- (1) Download the zip installation package of the required Q-CHECKER version from the TRANSCAT PLM website.

[http://www.transcat-plm.com/tcsoft/downloads/q-checker\\_v5.html](http://www.transcat-plm.com/tcsoft/downloads/q-checker_v5.html)

Make sure to choose the appropriate Q-CHECKER installation package for your version of CATIA.

- (2) Unpack the zip file into the desired directory.

You can use the utility integrated in WINDOWS Explorer (WINDOWS XP: context menu of the file icon > *Extract all files ...*) or a zip tool such as WINZIP, WINRAR or 7-ZIP.

When unpacked, all files are located in a directory named like Q-CheckerV5Rxx\_YYY.

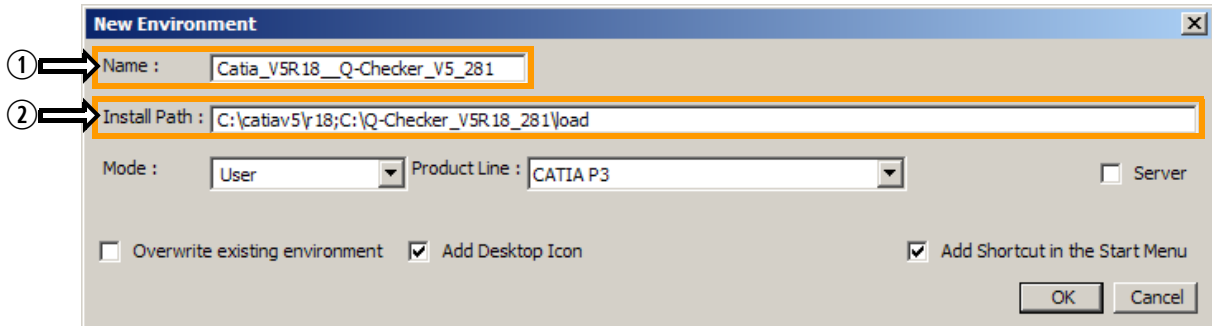
Create or modify a CATIA environment file

- (3) The environment editor helps you to create a new CATIA environment or to modify an existing environment. To run the CATIA Environment Editor, choose

Windows start menu > *Programs > Catia Pn > Tools > Environment Editor V5Rxx*

▷ Proceed with step (4) to create a new CATIA environment, or with step (5) to modify an existing environment.

(4) To create a new environment, choose menu *Environment > New*.



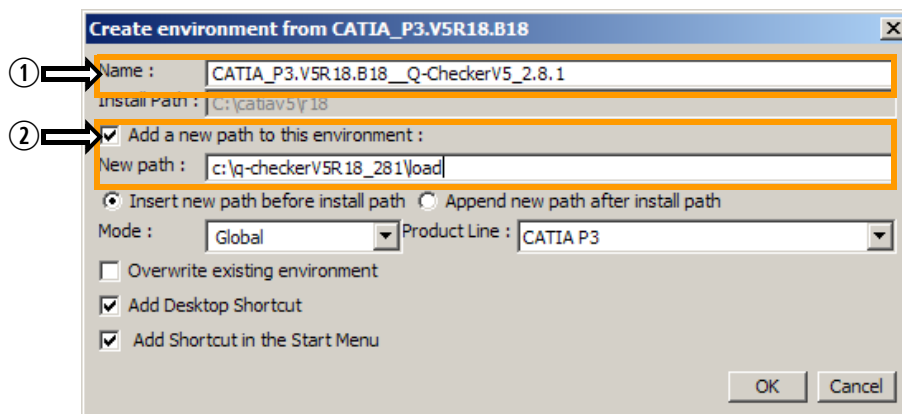
(4.1) Enter a name in the *Name* text box ①. We recommend to use name clearly indicating the configuration or purpose of the environment.

(4.2) In the *Install Path* text box ②, append a semicolon [ ; ] to the existing entry. Then append the full path to the load directory of the unpacked Q-CHECKER package. Example:

```
C:\catia\v5\r18;C:\Q-Checker_V5R18_2141\load
```

(4.3) Click *OK* and proceed with step (6).

(5) To modify an existing environment, choose the environment to be adapted from the upper list in the environment editor window. Then choose menu *Environment > New from*.



(5.1) Enter a name in the *Name* text box ①. We recommend to use a name clearly indicating the configuration or purpose of the environment.

(5.2) Choose the *Add a new path to this environment* option ②, and enter the full path to the load directory of the unpacked Q-CHECKER package.

(5.3) Check the settings of the other options on the dialog, and confirm with *OK*. The relevant values on the lower list in the environment editor window have been modified.

▷ For both new and adapted environments:

(6) Define the remaining environment variables that are necessary to run Q-CHECKER.

To add a new variable, right-click on the lower list in the environment editor window, and choose the *New Variable* menu item from the context menu.

↗ For a list of all environment variables see section 4.1 *Q-Checker Environment Variables* on page 27.

## 2.4 Adapting the Q-Checker startup script

In the Q-CHECKER startup script `qcheckerV5.vbs`, you can adjust additional settings:

- Paths used by Q-CHECKER that are not specified in the CATIA environment (usually this is not necessary)
- Viewer application for check reports, manuals and help pages if they are different from system settings or not given.
- Resources for PDQ help

Edit the startup script using a text editor. Note the annotations given in the startup script file itself.

### Configuring a PDQ Help Resource

To specify a resource with additional documentation, e.g. the company's quality guideline, set the file and, if required, the viewer application in the Q-CHECKER startup script.

Set the value of the `command` variable in the VBScript procedure `qchecker_show_pdq` (printed in boldface in the example).

```
Sub qchecker_show_pdq ()
    Set objShell = wscript.createObject("wscript.shell")
    command = """MyPDQHelpManual.html"""
    iReturn = objShell.Run( CStr( command ), 1)
    wscript.Quit
End Sub
```

Save the changes to the script file. The changes are applied after restarting CATIA.

## 3 Installing for UNIX

### Downloading and unpacking the application

- (1) Download the zip installation package of the required Q-CHECKER version from the TRANSCAT PLM website.

[http://www.transcat-plm.com/tcsoft/downloads/q-checker\\_v5.html](http://www.transcat-plm.com/tcsoft/downloads/q-checker_v5.html)

Make sure to choose the appropriate Q-CHECKER installation package for your version of CATIA.

- (2) Unpack the files to the installation directory:

If the archive file has the extension `tgz`, rename the file as follows:

```
mv *.tgz *.tar.gz
```

If the archive file has the extension `taz`, rename the file as follows:

```
mv *.taz *.tar.Z
```

Place the archive file in the desired installation directory, e.g.

```
cp qcheckerV5_2141.tar.gz /catdat/tcsoft
```

Change to the installation directory, e.g.

```
cd /catdat/tcsoft
```

If you have a `.tar.gz` archive, decompress and unpack the archive file:

```
gzip -d -c qcheckerV5_2141.tar.gz | tar -xvf -
```

If you have a `.tar.Z` file, decompress and unpack the archive file:

```
uncompress qcheckerV5_2141.tar.Z | tar -xvf -
```

When unpacked, all files are located in a directory named like `Q-CheckerV5Rxx_YYY`.



#### NOTE:

We recommend to decompress and unpack these archive files directly on UNIX- and not on WINDOWS. Some WINDOWS archive tools running modify the contents of archive files, making them unreadable on UNIX.

## Adapting Q-Checker to the local CATIA installation

To adapt Q-CHECKER to the local installation, you can create a new CATIA environment or expand an existing CATIA environment.

- To create a new a new CATIA environment and automatically creating a CATIA-with-Q-CHECKER icon in the application manager, proceed with *Creating a new CATIA environment* on page 21 (recommended).
- To extend an existing CATIA environment, proceed with *Extending an existing CATIA environment* on page 24.

### Creating a new CATIA environment

- (3) To create a new CATIA environment, use the `QCheckerSetEnv.sh` shell script included with Q-CHECKER. Below is an excerpt from this file. Adapt the entries printed in boldface to the requirements of your installation, as explained in the following subsections.

```
...
# Name of the new environment
#
QCHECKER_ENV="QCHECKER_V5R19_2141"
#
# Store the new environment in this directory
#
QCHECKER_ENV_PATH="/transcat/Catiav5R19/CATEnv"
#
# Installation directory of Q-Checker
#
QCHECKER_INSTALLATION="/catdat/tcsoft/qcheckerV5R19_2.14.1"
#
# CATIA installation directory
#
CATIA_INSTALLATION="/Catiav5/R19"
#
# This value is important for aix. The value can be aix_a or aix_a64
#
AIX_OSDS="aix_a"
#
```

```

...
chcatenv -e $QCHECKER_ENV -d $QCHECKER_ENV_PATH -var
  QCPATH=${QCHECKER_INSTALLATION} -new
chcatenv -e $QCHECKER_ENV -d $QCHECKER_ENV_PATH -var
QCDOC=${QCHECKER_INSTALLATION}/docv5 -new
chcatenv -e $QCHECKER_ENV -d $QCHECKER_ENV_PATH -var
QCHTML=${QCHECKER_INSTALLATION}/htmlv5 -new
chcatenv -e $QCHECKER_ENV -d $QCHECKER_ENV_PATH -var QCLoad=${QCHECKER_
INSTALLATION}/load/$OSDS/code/bin -new
chcatenv -e $QCHECKER_ENV -d $QCHECKER_ENV_PATH -var QcAdmin=${QCHECKER_
INSTALLATION}/adminv5 -new
chcatenv -e $QCHECKER_ENV -d $QCHECKER_ENV_PATH -var
  QcUser=\$USER_HOME/qcuserv5 -new
chcatenv -e $QCHECKER_ENV -d $QCHECKER_ENV_PATH -var
  QcReport=\$USER_HOME/qcreportv5 -new
chcatenv -e $QCHECKER_ENV -d $QCHECKER_ENV_PATH -var
  QcLicDB=NO -new
chcatenv -e $QCHECKER_ENV -d $QCHECKER_ENV_PATH -var
  QcGui=V2 -new
chcatenv -e $QCHECKER_ENV -d $QCHECKER_ENV_PATH -var
  QcBatch=V2 -new chcatenv -e
chcatenv -e $QCHECKER_ENV -d $QCHECKER_ENV_PATH -var
  QcLangCat=NO -new
...
setcatenv -e $QCHECKER_ENV -d $QCHECKER_ENV_PATH -p $CATIA_
INSTALLATION:$QCHECKER_INSTALLATION/load -new yes -desktop yes -a global \
  && change_cat_env || echo "\aCreating the environment failed."

```

**NOTE:**

When using Q-CHECKER V4 and V5 or more than one version of Q-CHECKER V5 in parallel, we strongly recommend to use separate user and report directories for each Q-CHECKER version. Example:

```

\$USER_HOME/qcuserV4
\$USER_HOME/qcuserV5

```

Keeping the QCHECKER.usr files and check reports in separate directories prevents files from being overwritten and helps you to distinguish between check protocols of different origin.

(3.1) Adapt the Q-CHECKER environment variables in the sample script to the actual directories of your local installation. The entries shown above are only sample values.

↗ For a list of all environment variables see section 4.1 *Q-Checker Environment Variables* on page 27.

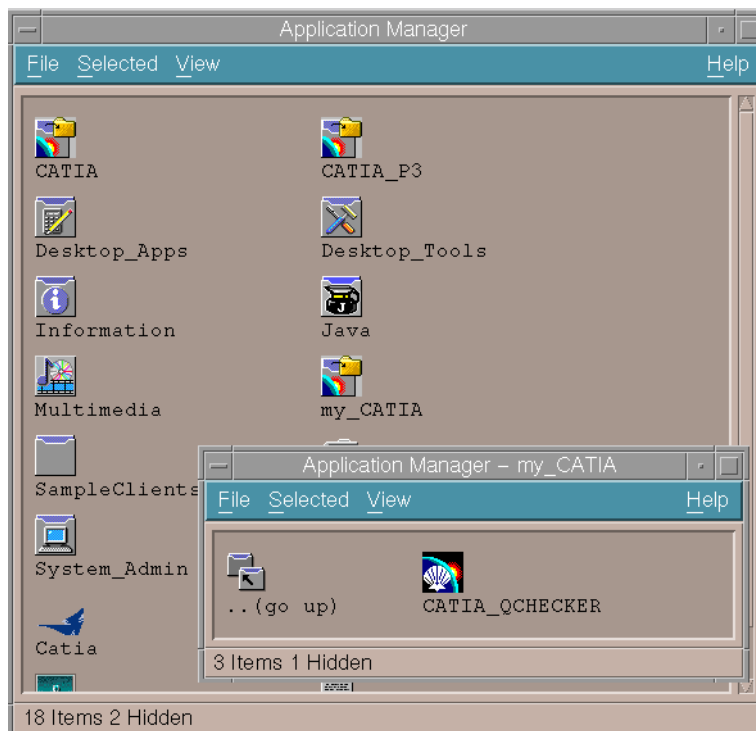
(3.2) To create a CATIA environment, change to the installation directory and run the QCheckerSetEnv.sh shell script:

```
./QCheckerSetEnv.sh -new {YES|NO} -desktop {YES|NO} -a {GLOBAL|USER}
```

Command Line Option	Value	Description
-new	YES	An existing environment with the same name will be replaced (recommended).
	NO	An environment with the same name will be not replaced, the existing environment will be maintained.
-desktop	YES	An icon of the environment is created on the desktop (recommended).
	NO	No icon of the environment is created on the desktop.
-a	GLOBAL	Create a global environment (recommended). Note: To create a global environment you need administrator rights.
	USER	A user environment is created.

**HINT:**

The CATIA-QCHECKER icon (see screenshot below) will be displayed in the application manager in the my\_CATIA directory only after re-login.



▷ Continue with the installation with *Adapting the qcheckerV5 startup script* on page 25.

## Extending an existing CATIA environment

- (4) To extend an existing CATIA environment, the `QCheckerEnv.sh` and `QCheckerEnv.csh` shell scripts are supplied with Q-CHECKER.

Below is an excerpt of an environment file using sample values. The portions printed in boldface have to be adjusted to the actual paths and desired settings.

- ↗ For a detailed explanation of the environment variables see section 4.1 *Q-Checker Environment Variables* on page 27.
- ↗ For an overview of the default directory structure of Q-CHECKER installation see section 4.2 *Directory Structure of a Q-Checker Installation* on page 33.

```
set +u

QCPATH=/catdat/tcsoft/qcheckerV5R19_2.14.1
\export QCPATH

QCDOC=${QCPATH}/docV5
\export QCDOC

QCHTML=${QCPATH}/htmlV5
\export QCTML

QCLOAD=${QCPATH}/load/$OSDS/code/bin
\export QCLOAD

QCADMIN=${QCPATH}/adminV5
\export QCADMIN

QCUSER=${USER_HOME}/qcuserV5
\export QCUSER

QCREPORT=${USER_HOME}/qcreportV5
\export QCREPORT

QCLICDB=NO
\export QCLICDB

QCGUI=V2
\export QCGUI

QCBATCH=V2
\export QCBATCH

QCLANGCAT=NO
\export QCLANGCAT
```

**NOTE:**

When using Q-CHECKER V4 and V5 or more than one version of Q-CHECKER V5 in parallel, we strongly recommend to use separate user and report directories for each Q-CHECKER version.

Example:

```
\$USER_HOME/qcuserV4
\$USER_HOME/qcuserV5
```

Keeping the QCHECKER.usr files and check reports in separate directories prevents files from being overwritten and helps you to distinguish between check protocols of different origin.

## Adapting the qcheckerV5 startup script

In the Q-CHECKER startup script `qcheckerV5`, you can adjust additional settings:

- Paths used by Q-CHECKER that are not specified in the CATIA environment (usually this is not necessary)
- Viewer application for check reports, manuals and help pages if they are different from system settings or not given.
- Resources for PDQ help

Edit the startup script using a text editor. Note the annotations given in the startup script file itself.

### Configuring a PDQ Help Resource

To specify a resource with additional documentation, e.g. the company's quality guideline, set the file and, if required, the viewer application in the Q-CHECKER startup script.

Adapt the `qchecker_show_pdq` function (printed in boldface in the example)

```
qchecker_show_pdq ()
{
# Enter the program and document that should be displayed when clicking on
# the PDQ help icon on the Q-Checker start panel. This functionality is
# optional and not required to run Q-Checker! Example:
# netscape "/catdat/tcsoft/qcheckerV5R19_2.14.1/docV5/pdq_help.html" &
acroread "/catdat/tcsoft/qcheckerV5R19_2.14.1/docV5/pdq_help.pdf" &
```

Save the changes to the script file. The changes are applied after restarting CATIA.

## Starting CATIA with Q-Checker environment on UNIX

To integrate Q-CHECKER in an existing CATIA environment, follow these steps:

(1) Set the CATIA environment (here: CATIA default environment). Example:

```
./catdat/tcsoft/qcheckerV5R19_2.1.1/QCheckerEnv.sh
```

(2) Start CATIA:

```
CNEXT
```

## 4 Q-Checker Environment Variables and Directory Structure

During Q-CHECKER installation, a CATIA environment is created or modified. This chapter describes the environment variables and the directory structure

### 4.1 Q-Checker Environment Variables

#### Mandatory Variables

Variable	Value	Description
QCPATH		Path where Q-CHECKER is installed (identical to the QCHECKER_INSTALLATION variable)
QCDOC		Path to the Q-CHECKER manuals
QCHTML		Path to the Q-CHECKER HTML online help
QCLOAD		Path to the Q-CHECKER load modules
QCADMIN		Path to the administration files
QCUSER		Path to user check profiles
QCREPORT		Path to check reports



#### NOTE:

- In the standard installation, the QCADMIN path is user-independent. The files in this directory can be used by all users.

The QCADMIN directory should be located on a file server to be accessible from all workstations.

- QCUSER and QCREPORT should be set to the home directory of the respective user, since the files in this directory are user-dependent and therefore kept separate for each user.

## Optional Variables

Variable	Parameter	Description
CATIA_INSTALLATION		Path where CATIA V5 is installed
AIX OSDS	aix_a64	Use this value for CATIA 32-bit.
	aix_a64	Use this value for CATIA 64-bit.
QCLANGCAT	YES	Q-CHECKER language identical with CATIA language—for the Q-CHECKER-supported languages German, English and French. For other languages Q-CHECKER is opened in English.
	NO	Q-CHECKER language can be selected in the <i>User Settings</i> dialog (default)
QCGUI	BOTH	Q-CHECKER GUI available in both QT and CATIA (CAA) style.
	V1	Q-CHECKER GUI available only in QT style
	V2	Q-CHECKER GUI available only in QT style (default)
QCBATCH	V1	Integrate the Q-CHECKER batch operation in CATIA to speed up processing. This integration uses an internal program level invisible to the user.
	V2 (default)	Do not integrate Q-CHECKER batch operation in CATIA
QCLICDB	NO	Use Q-CHECKER without database connection (default).
	YES	Use Q-CHECKER with database connection. Set this parameter when you have the additional TC-qcheckerV5-DB license for Q-CHECKER WITH DATABASE CONNECTION.
QCLICGH	NO	Use Q-CHECKER without Q-DOCTOR geometrical healing (default).
	YES	Use Q-CHECKER with Q-DOCTOR geometrical healing. Set this parameter when you have the additional TC-qcheckerV5-qdoctor license for Q-DOCTOR.
TCAQC_PDM_SAVE_ACTIVE_FOR_PATH	(Path)	Path setting used by TCAQC_PDM_SAVE_ACTIVATE

## Optional Variables (continued)

Variable	Parameter	Description
TCAQC_PDM_SAVE_ ACTIVATE	YES	Display a list of all checked models. The user can confirm to save all checked models to the PDM database, or cancel. <ul style="list-style-type: none"> <li>• If a path has been specified with the TCAQC_PDM_SAVE_ACTIVE_FOR_PATH keyword, the prompt is displayed only if the respective model was taken from the specified path.</li> <li>• If no path has been defined with the TCAQC_PDM_SAVE_ACTIVE_FOR_PATH keyword, the inquiry prompt is displayed in any case.</li> </ul>
	NO (default)	Do not display the prompt and do not save the models.
	SUPPRESS_ DIALOG_ AND_SAVE	Save all checked models to the PDM database without confirmation.
TCAQC_PDM_SAVE_ ACTIVE_AFTER_ HEALING	YES (default)	Display a list of all checked models. The user can confirm to save all checked models to the PDM database, or cancel. This is the default behavior for TCAQC_PDM_SAVE_ACTIVATE YES.
	NO	Display a list of models for which a healing has been performed, which will not be saved. The user can confirm to save the other models, for which no healing has been performed, or cancel.
TCAQC_PDM_TMP_ SAVE_PATH	(Path)	Models that are not saved yet are saved as a temporary file before the check. The parameter specifies the path for temporary files.
QC_USE_DISPLAY_ NAME	YES	Setting for connection to VPM V4: Display the CATIA model name instead of the internal name from VPM 4.
	NO (default)	Setting for connection to SMARTEAM: Display the CATIA model name instead of the internal name from SMARTEAM. For connections to VPM 4, the internal name from VPM V4 is displayed.

## Optional Variables (continued)

Variable	Parameter	Description
TCTRACE		<p>Set this variable to activate the Q-CHECKER trace mode.</p> <p>Specify a file name as value, e.g. TCTRACE= /tmp/TCTRACE.log</p> <p>Explanation: In Trace mode, significant program steps executed during Q-CHECKER check operation are written into a protocol file. The trace file enables the administrator to identify problems with check routines, files or elements that have occurred during check operation.</p> <p>This variable should not be set permanently, but only when the necessity arises.</p>
QC_REPORTS_IN_SPECTREE	NO	The internal check report is not displayed in the CATIA-specification tree, only in the browser for internal check profiles.
	YES	<p>The internal check report is displayed in the CATIA-specification tree (for certain document types only) and in the browser for internal check profiles.</p> <p>↗ For details about the internal check report see the Q-CHECKER – OVERVIEW MANUAL, section 4.1.6 <i>Internal Check Report</i></p>
	SPECTREE_ONLY	<p>The internal check report is displayed only in the CATIA specification tree.</p> <p>This applies for certain document types only. In case the document type does not allow to display the check profile in the CATIA specification tree, the check protocol is displayed in the browser for internal check reports.</p>
QCHIDETOOLS	see description	<p>Hide certain buttons on the Q-CHECKER toolbars in CATIA. Assign one or more of the following keywords to the variable as a comma-separated list:</p> <ul style="list-style-type: none"> <li>• InternalReport (<i>Display Browser for Internal Check Reports</i>)</li> <li>• AnalysisViewer (<i>Start Analysis Viewer</i>)</li> <li>• SealViewer (<i>Start Check Seal Viewer</i>)</li> <li>• DeleteQCElements (<i>Delete All Permanent Marking Elements</i>)</li> <li>• ModelTypeConfigurator (<i>Start Model-Type Configurator</i>)</li> </ul> <p>Example: To hide the <i>Start Analysis Viewer</i> and <i>Start Check Seal Viewer</i> buttons, use the following statement: QCHIDETOOLS=AnalysisViewer, SealViewer</p>

## Optional Variables (continued)

Variable	Parameter	Description
QCLICEXPIRYALERT	(Integer)	The value determines how many days before the expiry of your Q-CHECKER license an according alert will be displayed. To disable this message entirely, set the value to 0 or a not-a-number value (NaN). Standard installations are configured to display the alert during the last 30 days before expiry. ↗ For more information see the Q-CHECKER – OVERVIEW MANUAL, section 4.1.4.2 „Q-Checker Start Window with CATIA GUI“ – „Others tab card“
TCAQC_DBFILE_PATH	(Path)	Set this variable to use the same QCHECKER.db database definition file for all check profiles. The parameter specifies the path to the QCHECKER.db file. If this variable is not set, the QCHECKER.db is located in the db subdirectory of the respective check profile is used.
TCAQC_NODE_COL_FOR_CRIT_NOTCALLED	(RGB color code as 6-digit hex value or defined color name)	Color marking not called checks in the detailed check results of the internal analysis window. If this variable is not set, not called checks are marked in green. For defined color names see the comments for the PROFILE.par file.

## Sample values for the required environment variables

```

QCUSER      C:\Program Files\Transcat PLM\Q-CheckerV5R19_2141\User
QCREPORT    C:\Program Files\Transcat PLM\Q-CheckerV5R19_2141\Report
QCLICDB     NO
QCPATH      C:\Program Files\Transcat PLM\Q-CheckerV5R18_2141
QCADMIN     C:\Program Files\Transcat PLM\Q-CheckerV5R18_2141\adminV5
QCDOC       C:\Program Files\Transcat PLM\Q-CheckerV5R18_2141\docV5
QCHTML      C:\Program Files\Transcat PLM\Q-CheckerV5R18_2141\htmlV5
QCLOAD      C:\Program Files\Transcat PLM\Q-CheckerV5R18_
            2141\load\intel_a\code\bin

```

## CATIA Environment Sample File

## CATIA environment sample file

```

!-----
!   DASSAULT SYSTEMES - V5 ENVIRONMENT FILE
!-----
! MODE : Global
! TYPE : CATIA
! TMSTMP : 1179298808
!-----

CATEnvironment=/catiaV5/R19/$OSDS:/catdat/tcsoft/qcheckerV5R19_2141/load/$OSDS
CATInstallPath=/catiaV5/R19/$OSDS:/catdat/tcsoft/qcheckerV5R19_2141/load/$OSDS
LIBPATH=/catiaV5/R19/$OSDS/code/bin:/catdat/tcsoft/qcheckerV5R19_2141/load/$OSDS/code/
bin:$LIBPATH
LD_LIBRARY_PATH=/catiaV5/R19/$OSDS/code/bin:/catdat/tcsoft/qcheckerV5R19_2141/load/$OSDS/
code/bin:$LD_LIBRARY_PATH
LD_LIBRARYN32_PATH=/catiaV5/R19/$OSDS/code/bin:/catdat/tcsoft/qcheckerV5R19_2141/load/$OSDS/
code/bin:$LD_LIBRARYN32_PATH
SHLIB_PATH=/catiaV5/R19/$OSDS/code/bin:/catdat/tcsoft/qcheckerV5R19_2141/load/$OSDS/code/
bin:$SHLIB_PATH
CATICPath=/catiaV5/R19/$OSDS/code/productIC:/catdat/tcsoft/qcheckerV5R19_2141/load/$OSDS/
code/productIC
CATCommandPath=/catiaV5/R19/$OSDS/code/command:/catdat/tcsoft/qcheckerV5R19_2141/load/$OSDS/
code/command
CATDictionaryPath=/catiaV5/R19/$OSDS/code/dictionary:/catdat/tcsoft/qcheckerV5R19_2141/load/
$OSDS/code/dictionary
CATDocView=/catiaV5/R19/$OSDS/doc:/catdat/tcsoft/qcheckerV5R19_2141/load/$OSDS/doc

CATReffilesPath=/catiaV5/R19/$OSDS/reffiles:/catdat/tcsoft/qcheckerV5R19_2141/load/$OSDS/
reffiles
CATFontPath=/catiaV5/R19/$OSDS/resources/fonts:/catdat/tcsoft/qcheckerV5R19_2141/load/$OSDS/
resources/fonts
CATGalaxyPath=/catiaV5/R19/$OSDS/resources/galaxy:/catdat/tcsoft/qcheckerV5R19_2141/load/
$OSDS/resources/galaxy
CATGraphicPath=/catiaV5/R19/$OSDS/resources/graphic:/catdat/tcsoft/qcheckerV5R19_2141/load/
$OSDS/resources/graphic:/catiaV5/R19/$OSDS/resources/graphic/icons:/catdat/tcsoft/
qcheckerV5R19_2141/load/$OSDS/resources/graphic/icons:/catiaV5/R19/$OSDS/resources/
graphic/figures:/catdat/tcsoft/qcheckerV5R19_2141/load/$OSDS/resources/graphic/figures:/
catiaV5/R19/$OSDS/resources/graphic/splashscreens:/catdat/tcsoft/qcheckerV5R19_2141/load/
$OSDS/resources/graphic/splashscreens:/catiaV5/R19/$OSDS/resources/graphic/symbols:/
catdat/tcsoft/qcheckerV5R19_2141/load/$OSDS/resources/graphic/symbols:/catiaV5/R19/$OSDS/
resources/graphic/textures:/catdat/tcsoft/qcheckerV5R19_2141/load/$OSDS/resources/
graphic/textures
CATMsgCatalogPath=/catiaV5/R19/$OSDS/resources/msgcatalog:/catdat/tcsoft/qcheckerV5R19_2141/
load/$OSDS/resources/msgcatalog
CATFeatureCatalogPath=/catiaV5/R19/$OSDS/resources/featurecatalog:/catdat/tcsoft/
qcheckerV5R19_2141/load/$OSDS/resources/featurecatalog
CATDefaultCollectionStandard=/catiaV5/R19/$OSDS/resources/standard:/catdat/tcsoft/
qcheckerV5R19_2141/load/$OSDS/resources/standard
CATKnowledgePath=/catiaV5/R19/$OSDS/resources/knowledge:/catdat/tcsoft/qcheckerV5R19_2141/
load/$OSDS/resources/knowledge
CATStartupPath=/catiaV5/R19/$OSDS/startup:/catdat/tcsoft/qcheckerV5R19_2141/load/$OSDS/
startup

```

## CATIA environment sample file (continued)

```

CATW3ResourcesPath=/catiaV5/R19/$OSDS/docs:/catdat/tcsoft/qcheckerV5R19_2141/load/$OSDS/docs
CATReconcilePath=
USER_HOME=$HOME
CATReferenceSettingPath=
CATUserSettingPath=\$USER_HOME/CATSettings
CATCollectionStandard=
CATTemp=\$USER_HOME/CATTemp
CATMetasearchPath=/tmp
CATW3PublishPath=/tmp
CATSharedWorkbookPath=/tmp
CATErrorLog=\$USER_HOME/CATTemp/error.log
CATReport=\$USER_HOME/CATReport
CATDisciplinePath=

JAVA_HOME_aix_a=$JAVA_HOME
JAVA_HOME_aix_a64=$JAVA_HOME
JAVA_HOME_iris_a=$JAVA_HOME
JAVA_HOME_hpux_b=$JAVA_HOME
JAVA_HOME_solaris_a=$JAVA_HOME
JAVA_HOME=\$JAVA_HOME_$OSDS

CLASSPATH_JDBC_aix_a=
CLASSPATH_JDBC_aix_a64=
CLASSPATH_JDBC_iris_a=
CLASSPATH_JDBC_hpux_b=
CLASSPATH_JDBC_solaris_a=
CLASSPATH=\$CLASSPATH_JDBC_$OSDS:$CLASSPATH

PATH=/catiaV5/R19/$OSDS/code/bin:/catdat/tcsoft/qcheckerV5R19_2141/load/$OSDS/code/bin:/
  catiaV5/R19/$OSDS/code/command:/catdat/tcsoft/qcheckerV5R19_2141/load/$OSDS/code/
  command:$JAVA_HOME/bin:$PATH
QCPATH=/catdat/tcsoft/qcheckerV5R19_2141
QCDOC=/catdat/tcsoft/qcheckerV5R19_2141/docV5
QCHTML=/catdat/tcsoft/qcheckerV5R19_2141/htmlV5
QCLoad=/catdat/tcsoft/qcheckerV5R19_2141/load/aix_a/code/bin
QCADMIN=/catdat/tcsoft/qcheckerV5R19_2141/adminV5
QCUSER=\$USER_HOME/qcuserV5
QCREPORT=\$USER_HOME/qcreportV5
QCLICDB=NO
QCGUI=V2
QCBATCH=V2
QCLANGCAT=NO

```

## 4.2 Directory Structure of a Q-Checker Installation

The following table lists the directories of a Q-CHECKER installation and their describes their purpose.

Operating-system dependent directories and files

Directory	Description
qcheckerV5_2.14.1/load/intel_a	Software modules for WINDOWS 32bit
qcheckerV5_2.14.1/load/win_b64	Software modules for WINDOWS 64bit

## Operating-system dependent directories and files (continued)

Directory	Description
qcheckerV5_2.14.1/load/aix_a64	Software modules for AIX 64bit
qcheckerV5_2.14.1/load/aix_a	Software modules for AIX 32bit
qcheckerV5_2.14.1/load/hpux_b	Software modules for HP-UX
qcheckerV5_2.14.1/load/solaris_a	Software modules for SOLARIS
qcheckerV5_2.14.1/qcheckerV5.vbs	WINDOWS Startup script
qcheckerV5_2.14.1/qcheckerV5	UNIX Startup script
qcheckerV5_2.14.1/QCheckerEnv.csh	C-shell script to enlarge existing environment
qcheckerV5_2.14.1/QCheckerEnv.sh	Shell script to enlarge existing environment
qcheckerV5_2.14.1/QCheckerSetEnv.sh	Shell script to create new environment

## Operating-system independent directories

Directory	Description
qcheckerV5_2.14.1/KweQChecker	Q-CHECKER checks as knowledgeware
qcheckerV5_2.14.1/docV5/lang_DE	German manual in PDF format
qcheckerV5_2.14.1/docV5/lang_EN	English manual in PDF format
qcheckerV5_2.14.1/docV5/lang_FR	French manual in PDF format
qcheckerV5_2.14.1/docV5/lang_JP	Japanese manual in PDF format
qcheckerV5_2.14.1/htmlV5/lang_DE	HTML online help files in German
qcheckerV5_2.14.1/htmlV5/lang_EN	HTML online help files in English
qcheckerV5_2.14.1/htmlV5/lang_FR	HTML online help files in French
qcheckerV5_2.14.1/htmlV5/lang_JP	HTML online help files in Japanese

## Operating-system independent directories (continued)

Directory	Description
qcheckerV5_2.14.1/adminV5/ <Environment>	Administration files and check profiles
qcheckerV5_2.14.1/adminV5/ <Environment>/plugin/ KweQCheckerPlugin	Knowledgware plug-ins (if used)
qcheckerV5_2.14.1/adminV5/ <Environment>/structure	Start model
qcheckerV5_2.14.1/adminV5/ <Environment>/db	Database directory
qcheckerV5_2.14.1/readmeV5.txt	List of latest changes and additions
qcheckerV5_2.14.1/QCHECKER.in	Batch input sample file

**Note:** In the table, <Environment> is a placeholder for the actual name of the respective check profile. A standard installation of Q-CHECKER contains only the DEFAULT profile and the respective folder qcheckerV5\_xxx/adminV5/DEFAULT.

## 5 Language Selection

Q-CHECKER supports the following languages: English (EN), German (DE), French (FR), Japanese (JP) The language setting is applied to the GUI, screen output and newly created check protocols.

### 5.1 Language specification for the first program start

In the `QCHECKER.par` file, the language to be used for the first Q-CHECKER session can be specified.

- For details about the `QCHECKER.par` file see the **ADMINISTRATION MANUAL**, section 5 *QCHECKER.par file—Q-Checker General Settings* on page 30.

### 5.2 Language selection by the user

On the first start, the `QCHECKER.user` user file is created. This file stores the user-defined language settings and other user-specific settings. By default, the file is located in the home directory of the respective user (or as specified in the `QCUSER` environment variable).

The language setting can be changed by setting the `qchecker.USER_LANGUAGE` variable to the desired value. This setting can be changed manually using a text editor. After saving this file and restarting Q-CHECKER, the selected language will be applied.

When using the QT GUI, the language also can be changed interactively using the Q-CHECKER option menu. You need to restart Q-CHECKER for the change to take effect.

- For more information about language settings see the **Q-CHECKER – OVERVIEW MANUAL**, section 4.1 *Working Interactively with Q-Checker—Q-Checker user interface language*.

## 6 Enrolling licenses

### 6.1 License types

Q-CHECKER uses the same *LUM* license system as used for CATIA. Two types of licenses are available:

- Nodelock: Password valid only on one computer (tied to the hardware)
- Concurrent: License is available in a network. A license server is required.



**NOTE:**

- On a UNIX workstation, a license can be entered by the root user.
- On a WINDOWS PC, a license can be entered only by users having administrator rights.

### 6.2 License request

To ensure that your license request is processed as quickly as possible, we ask you to send your license request using the online forms at

<http://www.transcat-plm.com/lizenz>

The required Target ID can be retrieved using one of the following commands:

Operation system	Command	Sample pattern of a target ID
IBM AIX	<code>uname -m</code>	009481814C00
IBM AIX on P5 Series Workstation	<code>/usr/opt/ifor/ls/bin/i4target -O</code>	9481768C
SGI IRIX (FlexLM Host ID)	<code>lmhostid</code>	6909b894
HP-UX (Permanent Target ID)	<code>/var/lum/i4target</code>	ffff28ea
SUN SOLARIS	<code>hostid</code>	807fe3ee
MICROSOFT WINDOWS (Win32 MAC)	<code>i4target</code>	5DDE26F2

Operation system	Command	Sample pattern of a target ID
LINUX (MAC/LLA Address)	i4target -O	557cd770
Cluster	i4blt -H s -N cluster_name	9c1bb2a7e1a8.8d.41.d1 .9c.4c.00.00.00

## 6.3 Installation of Nodelock licenses

The nodelock password must be added to the `nodelock` file using a text editor. The file can be found in the following directory:

Operating System	Directory
IBM AIX	/var/ifor
HP-UX	/var/lum
SGI	/var/lum
SUN	/var/lum
WINDOWS 2000/XP	c:\Dokumente und Einstellungen\All Users\Anwendungsdaten\IBM\LUM

To enroll nodelock licenses, open the `nodelock` file from the password directory (see above) using a text editor (z. B. WORDPAD). If no `nodelock` file does yet exist, create the file using a text editor.

### Inserting the password text

In the license e-mail from Transcat PLM, you can find a text similar to the following example:

Copy the following 2 lines into your `nodelock` file:

```
# TransCAT: TC-qcheckerV5, Version 2.x, gueltig bis 31.12.2037
7db765b90080.02.81.96.00.18.00.00.00 64tkq3wzfzxi2gzci5j7t8p49keaa " " "2"
```

To enter the password in the file, copy these two lines beginning from the # sign (including the # sign) to your `nodelock` file, and save the file.



#### NOTE:

The `nodelock` file has no filename extension.

Some text editors automatically add a filename extension such as `.txt`. Make sure the `nodelock` filename has no extension. Rename the file if necessary.

## 6.4 Installation of concurrent licenses

Concurrent licenses are generated for a specific license server and are bound to its CPU ID.

When entering license keys, *LUM* License Manager must be installed, configured and activated. To enter concurrent license keys, you can use

- the *i4blt Command Line Interface* (all operating systems), or
- the *Graphic User Interface* (requires *LUM* version 4.6.5, earlier versions can be used on *WINDOWS* and *AIX* only).

↗ For further information refer to the *LUM* documentation, section *Using License Use Management Runtime*.



### NOTE:

A license can be entered

- on *UNIX* workstations only by the Root User,
- on a *WINDOWS* PC only by users having administrator rights.

The tools and entries for the license manager are located in the following directories:

Operation system	Directory
IBM AIX	/usr/opt/ifor/bin
HP UX	/var/lum
SGI IRIX	/var/lum
SUN SOLARIS	/var/lum
MICROSOFT WINDOWS 2000/XP	X:\ifor\WIN\BIN (replace X with the drive where <i>LUM</i> is installed)

## Enrolling a concurrent license

For registration the following methods are available:

### (a) Automatic registration

If you received the license certificate as an e-mail attachment, automatic registration is recommended.

To install the license, save the license file on the *LUM* server in a directory of your choice. Enter the command

```
i4blt -a -f filename
```

Replace `filename` with the path and name of the license file on the *LUM* server.

(b) Registration using the `IMPORT` function of the *i4blt* GUI:

After starting the *i4blt* GUI, the license certificate file can be registered using the *Import* function.



Step-by-step instruction:

- (1) Start the *i4blt* tool.
- (2) Select menu *Products > Single product ...*. The *Enroll Product* window appears.
- (3) Press the *Import* button. The *Import* dialog appears.
- (4) Select the license file and press *OK* to confirm.
- (5) Exit the *Enroll Product* by clicking the *OK* button.

## 7 Installing Check Profiles

Q-CHECKER relies on check profiles, in which the checks are defined.

Q-CHECKER users checking CAD data for compliance with the requirements of an OEM (Original Equipment Manufacturer) can receive the latest check profiles from their respective OEM. The Q-CHECKER website links to the online resources of some OEMs (login required) and also a number of check profiles for direct download.

<http://www.q-checker.com> > Downloads > Q-CHECKER V5 > Check Profiles

If you cannot find the required check profiles on our website, please contact TRANSCAT PLM:

[q-checker@transcat-plm.com](mailto:q-checker@transcat-plm.com)

- (1) Place the Zip archive file containing the desired check profile in the Q-CHECKER `adminV5` directory.
- (2) Unpack the archive file directly to the `adminV5` directory.
- (3) When unpacking, an environment directory containing all required files is placed in the `adminV5` directory. Example:

```
C:\Q-Checker_V5Rxx_2141\adminV5\<<Name_of_Profile>
```

The new environment will be available after Q-CHECKER has been restarted. The check profiles from will be available as standard profiles.

## 8 Troubleshooting



This section provides troubleshooting information for the following problems:

- On Windows, the Q-Checker icon in Catia is visible, but Q-Checker cannot be started.
- No Q-Checker icon in Catia
- On Windows, the Q-Checker setup routine aborts.
- On UNIX, Q-Checker does not start and displays the error message “Can't find libCATGeometricObjects.a”
- Q-Checker license cannot be found



### Problem 1

On WINDOWS, the Q-CHECKER icon in CATIA is visible, but Q-CHECKER cannot be started.

**Reason:** The `qcheckerV5.vbs` startup script is a VISUAL-BASIC script (VB Script). An anti-virus software may block the execution of VB scripts.

**Solution:** Check whether the problem is caused by anti-virus software and change its configuration as necessary.



### Problem 2

No Q-CHECKER icon in CATIA

**Reasons and possible solutions:** Check whether one or more of the following circumstances apply:

- System requirements not fulfilled: The CATIA configuration packages EI2 + MD2 + PM2 + SA2 and PX1 must be installed.
- CATIA has been started with a CATIA environment in which Q-CHECKER is not included.
- Wrong Q-CHECKER release; for example, Q-CHECKER for V5 R14 cannot be used with CATIA V5 R19.
- Icon is hidden

Check in CATIA whether the `QCheckerTB` is activated (*View menu > Toolbars*), or check in CATIA if Q-CHECKER has been loaded (*View menu > Toolbars > Customize > Commands tab*)

card; select *All Commands* from the value list on the left, and look up “Q-CHECKER” in the value list on the right).

- Check whether the Q-CHECKER icon is displayed for other document types (CATProduct, CATDrawing, CATPart).
- Check whether the Q-CHECKER icon is displayed when using the *PartDesign* workbench.
- Delete all CATSettings and restart CATIA.



### Problem 3

On WINDOWS, the Q-CHECKER setup routine aborts.

**Reason:** In the WINDOWS registry, the keywords in the branch HKEY\_LOCAL\_MACHINE\SOFTWARE\Dassault Systemes\B16\0 are missing.

- The DEST\_FOLDER keyword must point to the CATIA installation directory.
- The DEST\_FOLDER OSDS keyword must point to the subdirectory \intel\_a of the CATIA installation directory.

### Solution:

- Add the respective keywords or values to the Windows registry (using the WINDOWS tool `regedit.exe`).
- Re-install CATIA.



### Problem 4

On UNIX, Q-CHECKER does not start and displays the error message “Can't find libCATGeometricObjects.a”

**Solution:** Add an export command for the LIBPATH variable to the `qcheckerV5` script (the portion printed in boldface in the following excerpt from the `qcheckerV5` file).

The `echo $LIBPATH` command in the example is for testing purposes only and prints the value of LIBPATH to the console. You may delete this line after the problem is solved.

## Excerpt from the qcheckerV5 start up script

```

#-----
#
# Call the Q-CHECKER catia
#
#-----
if [ "${1}" = "-c" ]; then
if [ "${OSDS}" = "aix_a" ]; then
# replace dead_circumflex by asciicircum for QT
export DEAD_CIRCUM_KEY=`xmodmap -pke | grep dead_circumflex | head -1`
xmodmap -e "`echo ${DEAD_CIRCUM_KEY} | sed -e s/dead_circumflex/asciicircum/g`"

# replace dead_tilde by asciitilde for QT
export DEAD_TILDE_KEY=`xmodmap -pke | grep dead_tilde | head -1`
xmodmap -e "`echo ${DEAD_TILDE_KEY} | sed -e s/dead_tilde/asciitilde/g`"
fi

export LIBPATH=/usr/catiav5R19/B16/aix_a/code/bin:$LIBPATH
echo $LIBPATH

    "${QCHECKER_LOAD_PATH}"/TCAQChecker -c "${2}"

if [ "${OSDS}" = "aix_a" ]; then
xmodmap -e "`echo ${DEAD_CIRCUM_KEY}`"
xmodmap -e "`echo ${DEAD_TILDE_KEY}`"
fi
    exit
fi
#-----

```



## Problem 5

## Q-CHECKER license cannot be found

**Verifying the problem:** Use the TCALIC application to verify the problem. The application simulates the Q-CHECKER license mechanism and allows to request *LUM* licenses and release them again. In order to get granted a license, TCALIC first looks for a nodelock license. If no nodelock license can be found, then in the network for a Concurrent license is searched. If available; the license is drawn.

- (1) Start at a UNIX or WINDOWS command prompt.
- (2) The TCALIC application is located in the Q-CHECKER load/<Betriebssystem>/code/bin directory. Change to this directory.
- (3) To run TCALIC, enter a command as follows:

```
TCALIC <Product ID> <Product Version>
```

Typical command for the TC-qcheckerV5 (Q-CHECKER) license:

```
TCALIC 5000 2
```

Typical command for TC-qcheckerV5-DB (Q-CHECKER DATABASE CONNECTION) license:

```
TCALIC 5001 2
```

Typical command for TC-qcheckerV5-qdoctor license (Q-DOCTOR):

```
TCALIC 5002 2
```

For the correct values of Product ID and Product Version, refer to your license certificate or the *Basic License Tool* (when using network licenses).



**NOTE:**

- To use Q-CHECKER with database connection, both a TC-qcheckerV5 and a TC-qcheckerV5-DB license are required.
- To use Q-CHECKER with Q-Doctor geometrical healing, both a TC-qcheckerV5 and a TC-qcheckerV5-qdoctor license are required.

(4) TCALIC returns an output like the following:

```
*****
catadm-rsprog10:/catdat/tcsoft/qcheckerV5_2.14.1/load/aix_a/code/bin>TCALIC 5000 2

TCALIC try to get license for:
=====

Product ID: 5000
Product Version: 2

Try to get NODELOCKED license

tc_i4_ini_c: >tc_i4_ini_c: License not found in the database.<

License not granted
=====
```

In the example, a nodelock license was not found; the test failed (“License not granted”).

```
Try to get CONCURRENT license
```

```
License granted
=====
```

```
Type q to release the license
```

```
*****
```

In the example, a concurrent license was found and granted to TCALIC (“License granted”).

Press the  key to release the license.

**Possible solutions:** Verify the following issues:

- Is the license key registered correctly?
  - ↗ For details about enrolling a license correctly, see section 6 *Enrolling licenses* on page 37.
- Are the license settings in the CATIA environment file correct? If you have no *TC-qcheckerV5-DB* license, the parameter `QCLICDB` must be set to `NO`.

\*\*\*

TRANSCAT PLM on the internet

<http://www.transcat-plm.com>

Q-CHECKER on the internet

<http://www.q-checker.com>

Q-CHECKER Hotline

Phone +49 721 970 43 100

E-Mail [q-checker@transcat-plm.com](mailto:q-checker@transcat-plm.com)

TRANSCAT PLM GMBH © 2010

