



***Q-Checker V5 2.16.1***  
***What's new***

***TRANSCAT***  
A DASSAULT SYSTEMES COMPANY



# Q-Checker V5 2.16.1

## Overview

- 53 improvements have been made overall
- This “*What’s new*” describes the major changes:
  - ✚ Improvements
  - ✚ New Criteria
    - ↳ *Norms and Standards*
    - ↳ *Methodology*
  - ✚ New features in existing criteria
  - ✚ Fixes
    - ↳ *General*
    - ↳ *In Criteria*

# Q-Checker V5 2.16.1

## Improvements

### Check Seal Viewer

- Functionality has been extended: Check seals of all Components within Products can now be shown.

The screenshot displays the 'Q-Checker Check-Seal Viewer' interface. On the left, there are filter options: 'Root model, only', 'Only active component', 'All models' (selected), and 'Selection via regular expression:'. Below these are 'Match' and 'Not Match' buttons. The main area shows a table with the following data:

#	Assessment	General Error	Total Weight Sum	Name	Checking Date	Profil	Q-Checker Version
1	'Faulty'	0	4	Product1	'2011-05-12'	'ADMIN / Test_Profile [CATProduct]'	'Q-Checker for V5 Version 2.16.1 '
2	'Faulty'	0	3	Product2 (Product2.1)	'2011-05-12'	'ADMIN / Test_Profile [CATProduct]'	'Q-Checker for V5 Version 2.16.1 '
3	'Faulty'	0	6	Part1 (Part1.1)	'2011-05-12'	'ADMIN / Test_Profile [CATPart]'	'Q-Checker for V5 Version 2.16.1 '
4	'Faulty'	0	6	Part2 (Part2.1)	'2011-05-12'	'ADMIN / Test_Profile [CATPart]'	'Q-Checker for V5 Version 2.16.1 '

Overlaid on the viewer is the 'Q-Checker Check-Seal Settings' dialog box. It contains a table with the following data:

Name	Display
#	Yes
Assessment	Yes
General Error	Yes
Total Weight Sum	Yes
Name	Yes
Checking Date	Yes
Checking Time	No
Profil	Yes
File Path	No
Q-Checker Version	Yes
Catia Version	No

The dialog also features 'Up', 'Down', 'Activate', and 'Deactivate' buttons, and 'OK' and 'Cancel' buttons at the bottom. A green dashed arrow points from the 'Q-Checker Check-Seal Settings' dialog to the 'HTM' icon in the viewer's right-hand area.

# Q-Checker V5 2.16.1

## Improvements

- **Check seal information as "User defined properties"**
  - ✚ The information of the last check can now be written into *User defined properties*.
    - ↳ Useful e.g. to propagate this information into PDM systems
    - ↳ Not usable for validation

Product: Added Properties	
QC_CHECKING_TOOL	Q-Checker for V5 Version 2.16.1
QC_MODEL_CAD_VERSION	Catia V5 R19 SP3 Build Date 04-19-2010.14.44
QC_CHECKING_DATE	2011-05-12
QC_CHECKING_TIME	16:31:45
QC_PROFILE_NAME	ADMIN / Test_Profile [CATPart]
QC_MODEL_ASSESSMENT	Faulty
QC_RETURN_CODE	0
QC_TOTAL_WEIGHT_SUM	27
Define other properties...	

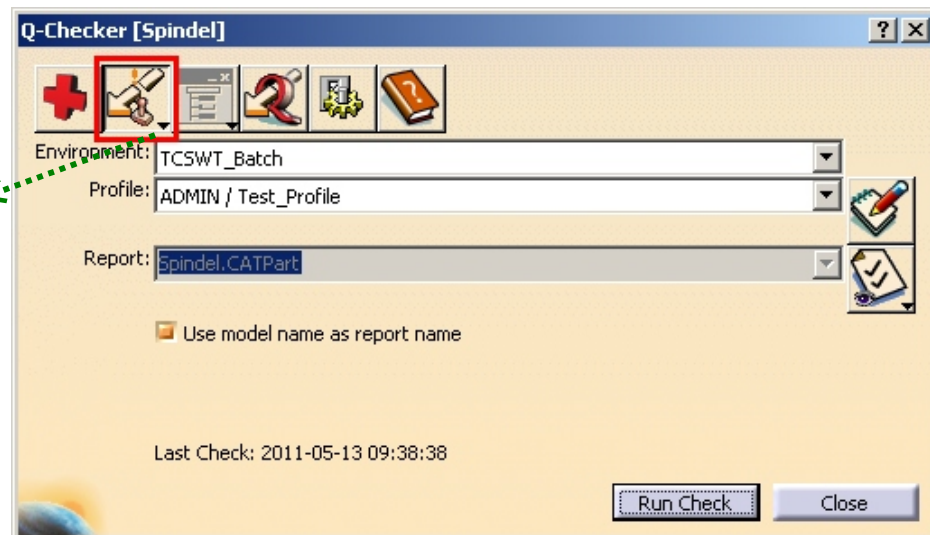
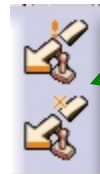
# Q-Checker V5 2.16.1

## Improvements

### Check Seal Validation:

- ✎ The validation of the internal check seal can now be skipped
  - ✎ A check without check seal validation is performed
  - ✎ By default the icons are not displayed, they can be activated in the QCHECKER.par

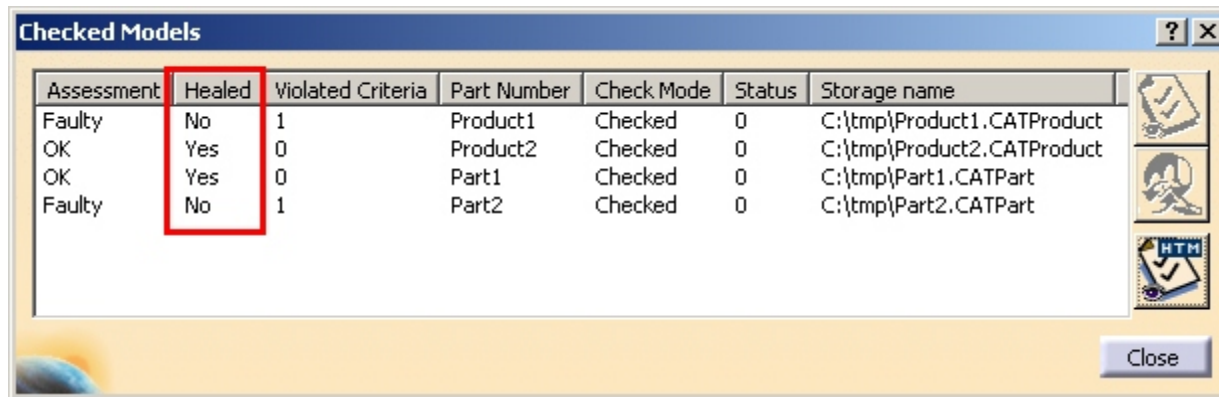
Skip check seal validation:  
in any case  
if no seal exists



# Q-Checker V5 2.16.1

## Improvements

- Sub-product selection / Checked-Models window:
  - New column **Healed** has been added to the *Checked-Models* window

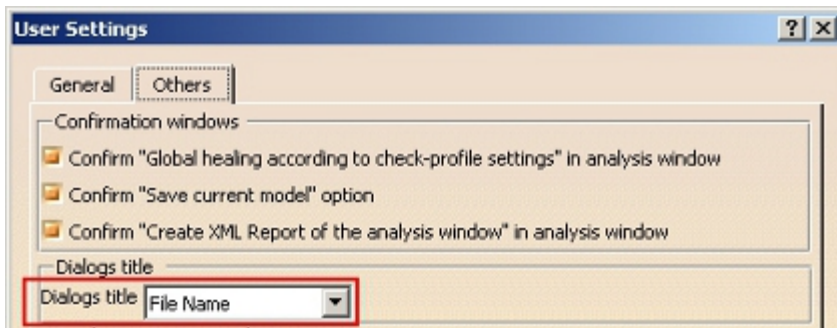


Assessment	Healed	Violated Criteria	Part Number	Check Mode	Status	Storage name
Faulty	No	1	Product1	Checked	0	C:\tmp\Product1.CATProduct
OK	Yes	0	Product2	Checked	0	C:\tmp\Product2.CATProduct
OK	Yes	0	Part1	Checked	0	C:\tmp\Part1.CATPart
Faulty	No	1	Part2	Checked	0	C:\tmp\Part2.CATPart

# Q-Checker V5 2.16.1

## Improvements

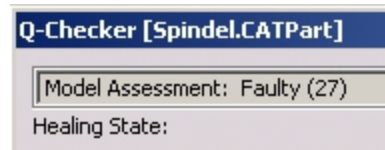
### ➤ New User settings (1): “Dialogs title”



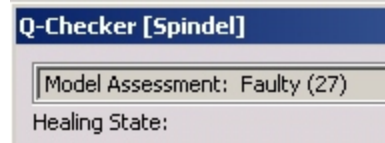
- Now the “Part Number” can be used as header for Q-Checker windows
  - Useful e.g. if a PDM System is used
  - The default setting is “File Name”
  - Is applied for Parts and Products

Header of Q-Checker Analysis window:

Dialogs title = File Name



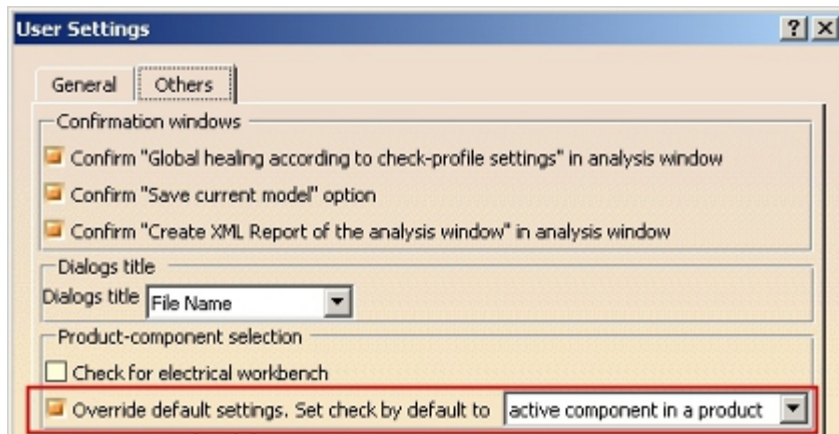
Dialogs title = Part Number



# Q-Checker V5 2.16.1

## Improvements

### ➤ New User settings (2): “Check by default”

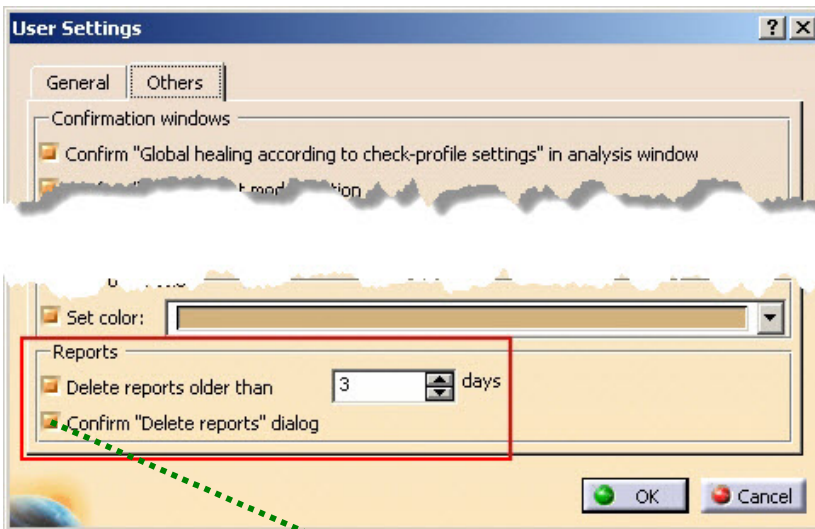


- ✎ The user can now set which Product component(s) are checked:
- ✎ **Active component in a Product**
  - ✎ **All components in a Product**
  - ✎ **Root Product**
- ✎ *The User Setting overrides the settings of QCHECKER.par*

# Q-Checker V5 2.16.1

## Improvements

### • New User settings (3): “Delete reports older than X days”

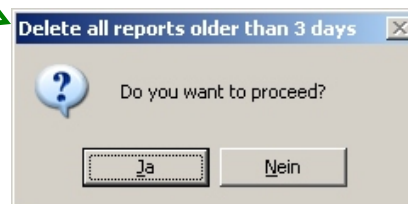


✎ The user can now set that reports older than a defined number of days are deleted.

↳ *If the option is set, Q-Checker checks at every start if the report directory contains reports older than the defined number of days and deletes them*

✎ In addition a confirmation dialog can be activated.

↳ *The confirmation dialog informs the User and offers the possibility not to delete the old reports*



# Q-Checker V5 2.16.1

## Improvements

- **Zooming factor of dialog trees**
  - ✚ Now Q-Checker keeps the last zooming factor of its dialog trees.
  
- **Q-Checker Check Survey file (\*.out.html)**
  - ✚ Links to the report files contain relative paths.
    - ↳ *Only if reports and Q-Checker Check Survey file are written in the same directory*
    - ↳ *If the \*.out.html and all linked html reports are moved into another directory the links will still work.*
  
- **Identical models batch**
  - ✚ Q-Checker identifies models selected several times and checks them only one time.
    - ↳ *Also model path, environment and profile must be identical*
    - ↳ *The two identical checks must be one after another*

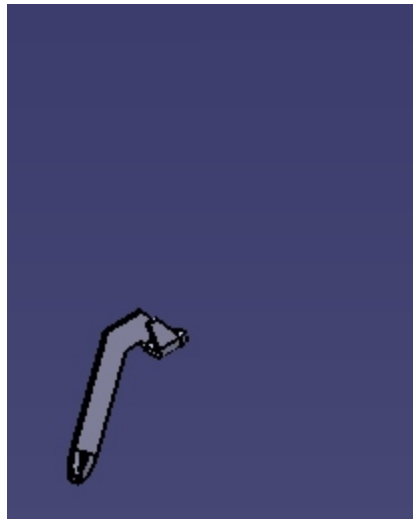
# Q-Checker V5 2.16.1

*New Criteria* > Norms and Standards > Solids

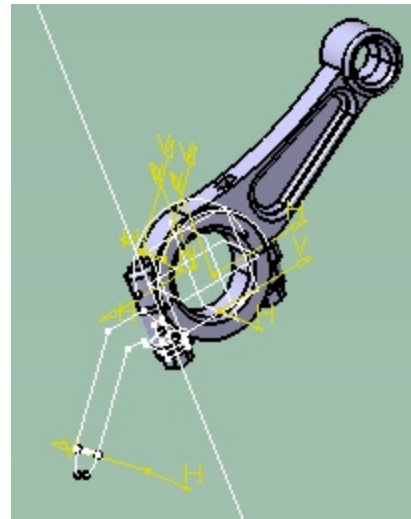
- New criterion: **"Number of Visible Faces"**

- Checks the ratio of visible faces / non-visible faces against a defined value.

Visible faces



Non-visible faces



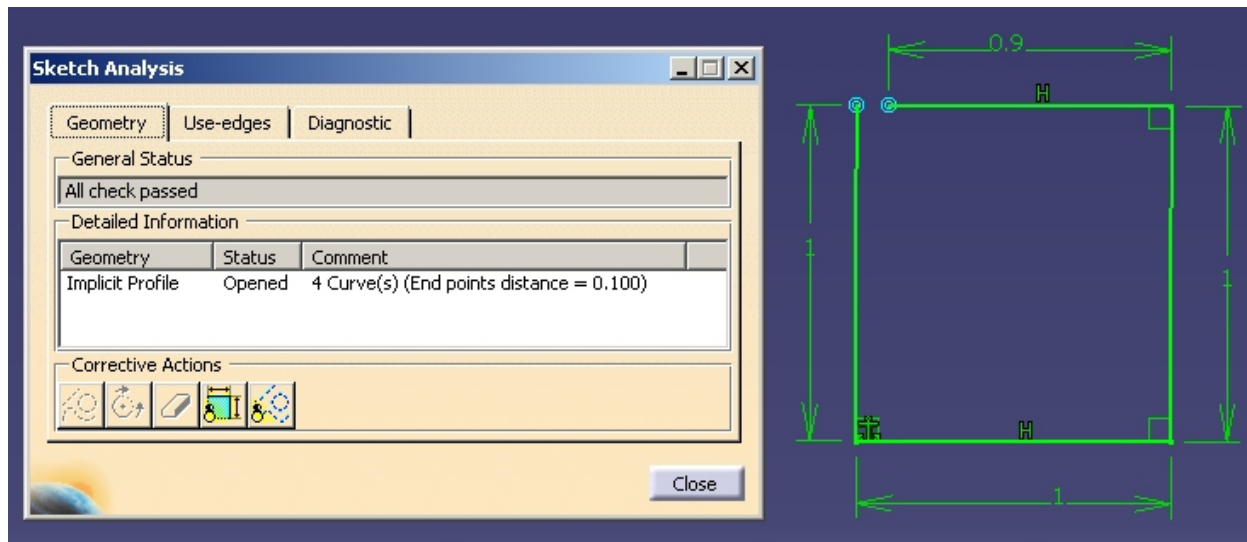
# Q-Checker V5 2.16.1

**New Criteria** > Norms and Standards > Elements > Sketches

## New criterion: "Open Sketch"

🔧 Checks whether sketches contain open contours.

👉 *Tip: Use Sketch Analysis to identify and close open contours in sketches.*



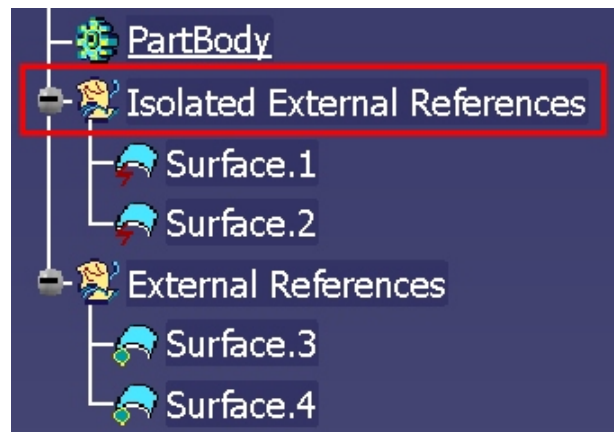
# Q-Checker V5 2.16.1

*New Criteria* > Methodology > Parts

- New criterion: **"Non-Allowed Isolated External References Set"**

- 🔗 Checks whether the model contains a geometrical set for **Isolated External References**.

- 👉 *Note: The **Isolated External References** set is not identified by its name but by a special attribute.*



# Q-Checker V5 2.16.1

## New features in existing criteria

### Criterion: "Conditional Feature Properties" / Check Condition

#### New keywords:

 **MODEL\_PROPERTY** ( "name" )

 **COMPONENT\_PROPERTY** ( "name" )

Name: PartNumber, Revision, Definition, Nomenclature,  
Source, DescriptionRef, ...

Example: IF( NAME = "My Model" )

THEN ( MODEL\_PROPERTY( "Source" ) = "Made" )

#### New keywords:

 **MODEL\_ELEC\_TYPE**

 **COMPONENT\_ELEC\_TYPE**

Example: IF ( NAME = "Multi-branchable" )

THEN ( MODEL\_ELEC\_TYPE = "ElecGeoBundle" )

### Criterion: "Non-Tangent Faces (G1 Discontinuity) [G-SH-NT]"

 Q-Doctor healing has been added.

# Q-Checker V5 2.16.1

## Fixes > General

- **Q-Checker check run executed by a CATScript:**
  - ✚ Is again working correctly.
- **Product-component selection:**
  - ✚ The *Product-component selection* is now also available if the following CATIA Setting is enabled:
    - ✚ *CATIA > Tools > Options > Infrastructure > Product Structure > Product Structure > Specification tree: Products.*
- **Sub-product selection / Checked-Models window:**
  - ✚ If the name of the *RootPart* has been changed by a healing, now the *Part Number* in the *Checked Models* window is updated.
  - ✚ In some cases the report of the first document could not be opened.

# Q-Checker V5 2.16.1

## Fixes > General

### • **Last-modifications check:**

- ✎ In a specific case the violated elements appeared twice in the analysis window tree after an *last-modifications check*.
- ✎ Permanent marking elements that have been deleted were marked as faulty after an *last-modifications check*.
- ✎ In a specific case the *last-modifications check* led to a Q-Checker abort.

### • **Recheck after Q-Doctor healing**

- ✎ Could led to an abort in specific cases.

# Q-Checker V5 2.16.1

## Fixes > In Criteria

- Criterion: **"Self-Intersecting Face Loop [G-LO-IS,G-FA-IS]"**
  - 🔗 In a specific case the checking led to a Q-Checker abort (only Windows 64bit).
- Criteria: **"Parameter Not Linked to Text"** and **"Text Not Linked to Parameter"**
  - 🔗 Multiple links are now handled correctly.
- Criterion: **"Element Name"**
  - 🔗 Hiding one healing option could led to a Q-Checker abort (only QT Interface).
- Criterion: **"Electrical Topology"**
  - 🔗 In some cases connectors have been erroneously marked.

***TRANSCAT***

**For more information, please contact us.**

**q-checker@transcat-plm.com**

**+49 721 / 97 0 43 - 100**

**www.transcat-plm.com**