

**XFILEV5** V1.6.x

for CATIA® V5

# USERS MANUAL



## Orientation Symbols Used in the Manual

### Warning triangle



The warning triangle refers to *critical circumstances*, which should be considered *imperatively* in order to avoid *serious* problems in your work.

### Hint symbol



The light bulb relates to *hints*, which provide you with *practical examples* to simplify your work.

### Note symbol



The hand symbol relates to *notes*, which you should pay attention to in order to assure that you can *work without problems*.

### Info symbol



The info symbol relates to background *information*.

### Step symbol



The work steps symbol refers to a *step-by-step instruction sheet*.

TRANSCAT PLM in the Internet:

<http://www.transcat-plm.com/>

XFILEV5 in the Internet:

<http://www.transcat-plm.com/xfilev5>

TRANSCAT PLM Hotline:

Phone: +49 721 97043 35

E-mail: [xfilev5@transcat-plm.com](mailto:xfilev5@transcat-plm.com)

## Table of Contents

1.	What is XFILEV5 ? .....	5
2.	XFILEV5 in Detail .....	7
•	XFILEV5 Language Support.....	8
2.1	XFILEV5 Operation Modes .....	9
2.1.1	Interactive Mode.....	10
2.1.1.1	Export.....	10
•	Export file tree dialog box.....	16
2.1.1.2	Import .....	20
•	Import File Tree dialog box .....	25
2.1.2	Utility Mode .....	29
2.1.2.1.1	Export & ... .....	29
2.1.2.1.2	Import .....	29
2.1.3	Batch Mode.....	30
2.1.3.1	Export.....	30
2.1.3.2	Import .....	32
2.1.4	File Description—XFileV5.par .....	34
2.2	License Management .....	37
2.3	XFILEV5 Output Information .....	37
2.3.1.1	XML File.....	37
2.3.1.2	Log File for XFILEV5 .....	39
2.3.1.3	Return Codes for XFILEV5.....	39
3.	CV5 CONSISTENT FILE SET in Detail.....	40
3.1	How to Work .....	43
•	Input on the Command Line—Syntax.....	43
3.2	The Check Results .....	44
3.2.1	Report Files for CV5 CONSISTENT FILE SET .....	45
3.2.2	Log File for CV5 CONSISTENT FILE SET.....	48
3.2.3	Return Codes for CV5 CONSISTENT FILE SET .....	48
3.3	TCAXFileV5Customize.nls File.....	48
4.	DELETE in Detail .....	49
4.1	Functionality in General .....	49
4.2	Work Steps.....	50
•	Checks executed while deleting .....	51
4.3	Graphical User Interface of DELETE.....	52
4.4	Log File for DELETE .....	54

5.	MOVE in Detail .....	55
5.1	Functionality in General .....	55
5.2	Work Steps .....	56
•	Checks executed while moving .....	56
5.3	Graphical user interface of MOVE .....	57
5.4	Log File for MOVE .....	59

\* \* \*

# 1. What is XFILEV5?

XFILEV5 is a package of programs conceived to facilitate the work with CATIA V5 documents. It consists of two modules independent of each other:

XFILEV5 itself and CV5 CONSISTENT FILE SET.

- XFILEV5 is a tool facilitating the exchange of CATIA V5 document sets on both sending and receiving sides:  
 On the sending side the tool finds out on the base of a specified root document, which are the linked documents of this root and packs them in a container file.  
 On the receiving side the tool unpacks the container file and checks the completeness of the CATIA V5 document sets.  
 The main features and benefits of XFILEV5 will be described in the following section 2 XFILEV5 in Detail starting on page 7.
- CV5 CONSISTENT FILE SET is a tool destined to verify directories:  
 —it checks all files contained in a specified directory to find out whether the document set in it is consistent  
 —and eventually generates one or two report files in xml format, a text log file and gives out return code.  
 For detailed description see section 3 CV5 CONSISTENT FILE SET in Detail, starting on page 40.
- DELETE is a tool destined to help the user giving him a clear overview when deleting structured CATIA V5 and CATIA V4 documents:  
 —DELETE checks which linked documents relate to the currently opened CATIA document or to the selected components;  
 —the DELETE tool deletes completely:
  - ▶ The opened CATIA document and the documents linked to it;
  - ▶ In case of CATProducts: The selected document within the opened document and the documents linked to it.
 —Components that are referenced by other documents will be excluded from deleting.  
 —DELETE finally generates a log file in txt format.

For detailed description see section 4 *Delete in Detail* on page 49.

- MOVE is a tool that ensures secure moving of CATIA V5 and CATIA V4 documents into an other directory:  
 —MOVE checks which linked documents relate to a selected CATIA document.  
 —MOVE transfers the complete document set including all linked documents into a

directory selected by the user,

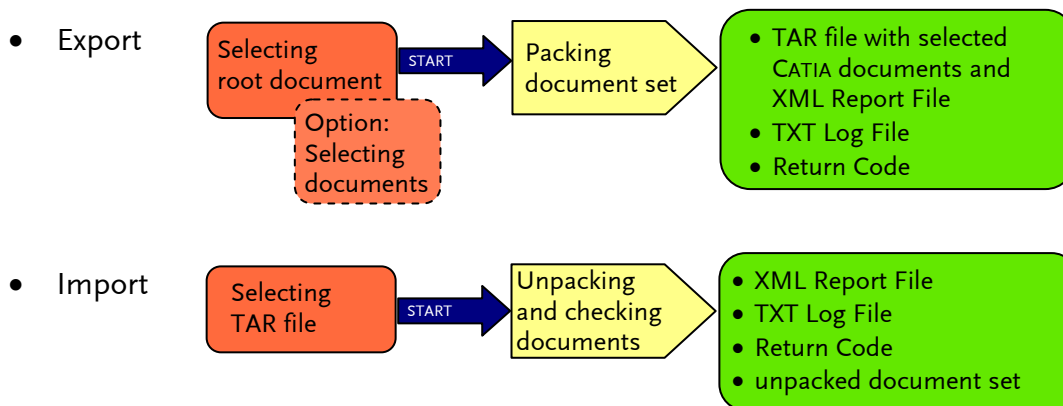
—For moving CATIA *SendTo* *methode* is used.

—While moving some documents can be excluded from deleting.

—MOVE finally generates a log file in `txt` format.

For detailed description see section 5 *Move in Detail* on page 55.

## 2. XFILEV5 in Detail



- Export

The sender specifies a root document of a CATIA file set to be prepared for sending. For this root document all linked documents—existing and missing ones—will be identified. The sender may verify in a *File tree* dialog box the extent and the structure of the file set:

—Which files are in the file set?

—What is the hierarchy?

—Are there missing files?

Also the sender may determine which files are not to send so that is no need to send unnecessary documents.

When the settings are done, pressing the Start button launches the process of packing the selected document set, a container file is created storing beside of the documents themselves also an XML file containing information on the document set.

- Import

During import the container file is unpacked, the completeness of the CATIA V5 document sets is checked (if it matches the XML file information), and the link information is adapted to the target directory.

- Document set information:

The XML information file contains data-exchange relevant information: names of all documents—sent as well as not sent or missing—, and their type, directory names etc.

- Packing and unpacking:

In order to avoid loss of naming information, the documents for sending are packed in a container file. To avoid incompatibilities of packing tools, GNU PACKER is delivered with XFILEV5 so that all XFILEV5 users will work with the same tool.

- Avoiding link problems:

The *Send To* save method of CATIA is used to adapt the link information according to the current directory. For packing the *Send To* method is used optionally, for unpacking the use is compulsory.




- **XFILEV5 Language Support**

XFILEV5 is delivered with both German and English GUI. In which language the manual is opened depends from the language selected for CATIA. If in CATIA an other language beside English and German has been selected, XFILEV5 is opened with English GUI.

## 2.1 XFILEV5 Operation Modes

To work with XFILEV5, three different operation modes are available. The table below gives an overview of these modes.

The details of the operation modes will be described in the following chapters.

Operation mode		
How to be started	Purpose and general description	Detailed description
<ul style="list-style-type: none"> <li>• Interactive Mode</li> </ul>		
CATIA icon to start CATIA with XFILEV5 environment  → 	Exporting or importing CATIA document sets and other linked documents from within CATIA V5	▶ See section 2.1.1 <a href="#">Interactive Mode</a> on page 10.
<ul style="list-style-type: none"> <li>• Utility Mode</li> </ul>		
XFILEV5 desktop icon 	Exporting or importing CATIA document sets and other linked documents from GUI without starting CATIA.	▶ See section 2.1.2 <a href="#">Utility Mode</a> on page 13
<ul style="list-style-type: none"> <li>• Batch Mode</li> </ul>		
From command line	Exporting or importing CATIA document sets and other linked documents from command line. Batch Mode allows integration of data-exchange operations into automated processing applications, possibility to process several jobs one after another.	▶ See chapter 2.1.3 <a href="#">Batch Mode</a> on page 30.

## 2.1.1 Interactive Mode

The interactive mode of XFILEV5 is started inside an interactive CATIA V5 session; the operation is controlled via GUI.

### 2.1.1.1 Export

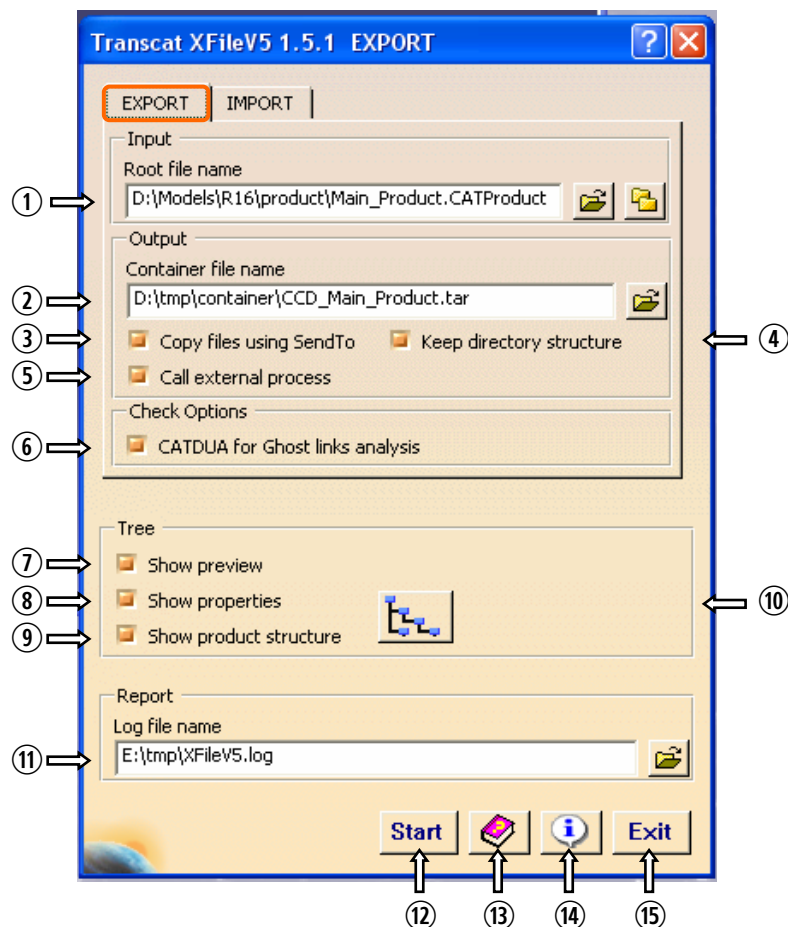
The *Export* function provides the following functionalities (cf. fig. below):

- To select the input document to be sent.
- To specify the output container file name.
- To select the copy method (normal copying or copying using *Send To* method).
- To specify the log-file name.

The *Export file tree* dialog box (see page 16) allows:

- To verify whether documents of the document set are missing.
- To select which documents are to be packed in the container file.

- *Export dialog box*



### *Input box*

- ① *Root file name* text box with *File selection* button and *Root document selection* button

These three elements allow to select the document to be sent. The document name can be entered in the text box or can be selected with the *File selection* dialog box or with the *Root directory selection* dialog box, which are opened after pressing the respective button.



In case of Interactive Mode by default the text box is filled with the name of the currently opened CATIA document.



*Open file* button

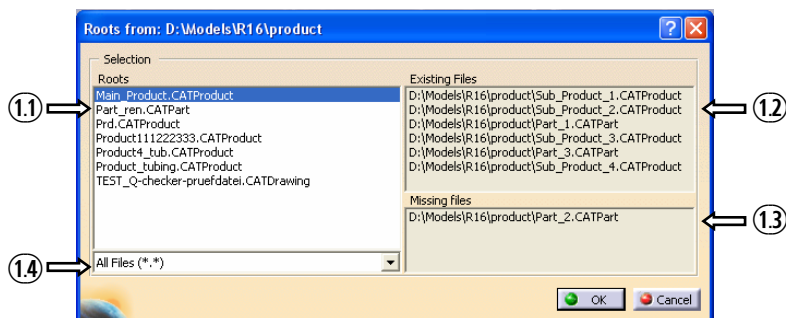
This button opens the *File selection* dialog box in which a document to send can be selected.



### *Root directory selection button*

This button opens the *Root directory selection* dialog box that facilitates root-documents recognition.

After clicking this button, first a directory selection dialog box is opened. Select in this window a directory and click the *OK* button. The selected directory is scanned for root documents, which then will be displayed for selection in the root-document selection dialog box. Select in the root-document selection dialog box the required root document.



- ① In the *Root selection* box the required root document is to be selected.
- ② In the *Existing files* box, it can be verified which files relate to the selected root document.
- ③ In the *Missing files* box the names of documents are displayed that are linked to the selected root document, but are missing.
- ④ The *Filter* list box allows to restrict the display in the *Root* selection box to the documents of one only document type.

### **Output box**

- ② *Container file name* text box and *Open file* button

These two elements allow to define the name of the container file to be created. The document name can be entered in the text box or can be selected with the *File selection* dialog box, which is opened after pressing the respective button.

By default, this text box is filled with a name identical to the root-document name, the extension `tar` being added (if this is predefined in the `XFileV5.par` administration file—keyword `EXP_CONTAINER_DEF_TAR_EXTENSION`). The user can define a default directory of the container file using the environment variable `XFILEV5_EXP_TARGET_DIR`.

To predefine a name for the container file, the `XFILEV5_ADMIN` environment variable is to be used, which points to the `XFileV5.par` file in the `admin` directory. In the `XFileV5.par` file the format of the container name can be predefined.

③ *Copy files using Send to* check box

If this option is activated, the selected files will be sent to the specified directory using the CATIA *Send To* method. If unchecked, normal copying will take place. (This check box can be deactivated by the administrator.)

④ *Keep directory structure* check box

This option is active only if the *Copy files using Send To* check box is activated. If this check box is activated, the *Send-to* method will be applied with keeping the directory structure. (This check box can be deactivated by the administrator.)

⑤ *Call external process* check box

The name of this check box might have been modified according to user needs!

(The name of the checkbox can be defined in the `TCAXFileV5Customize.nls` file with the parameter of the keyword `Export_CallExternalProcessCheckButton_Label`).

If this option is activated, after pressing the *Start* button ⑫—as soon as the file container is created—a user-programmed process will be started. This process may consist of different operations that automatize export/send processes (as copying files, sending the prepared container file into a predefined directory or to a specified address, writing the results of the XFILEV5 operation into a database for statistical overview etc.).

In the `XFileV5.par` file the arguments of the external process can be predefined, using the `xfilev5.EXP_EXTERNAL_PROCESS_ARG` variable.

When an external process is started, XFILEV5 can show two behaviors, depending from the setting for `xfilev5.EXP_EXTERNAL_PROCESS_WAIT` – XFILEV5 can wait for the end of the external process or not wait for it (cf. page 35).

**Check options box**⑥ *CATDUA for Ghost links analysis* check box

If this option is activated, a check for ghost links will be executed. In case that ghost links have been found, the user can solve the link problem by using the CATIA CATDUA routine. To see whether by the check ghost links have been found, press the *Show Tree* button ⑩ to open the *Export file tree* dialog box (see below)—if found, in the *Document tree* box ⑱ (page 19) in the file tree blue icons before the file name will be displayed, signaling that the respective file needs to be processed with the CATDUA routine. In the *General info* box ① (see page 16) the number of the files with the `NeedCATDUA` state will be indicated with their total size. Cf. *Show/hide files with ghost-link* toggle switch ⑨ on page 17). If ghost links have been found and the *Start* button ⑫ is pressed, a warning message will be displayed.

## Tree box

### ⑦ *Show preview* check box

If this option is activated, in the *Export file tree* dialog box (see below) the *Preview* box ⑩ (see page 20) will be activated.

Note: If a directory is write-protected, a preview of the files in it cannot be given.

### ⑧ *Show properties* check box

If this option is activated, in the *Export file tree* dialog box the properties of the highlighted component will be displayed.

### ⑨ *Show product structure* check box

This check box controls whether in the *Export file tree* dialog box (see below page 16) the documents will be shown in a (simplified) hierarchical product structure or only in a flat structure.

### ⑩ *Show Tree* button



By pressing this button the selected root directory is checked and the *Export file tree* dialog box is opened—see below section *Export file tree* dialog box on page 16. The icon on the button prompts in which structure the file tree will be shown (hierarchical or flat).

## Report box

### ⑪ *Log-file name* text box and *Open file* button

These two elements allow to specify the log file document. The document name can be entered in the text box or can be selected with the *File selection* dialog box, which is opened after pressing the respective button.

By default this text box is filled with a name identical to the root-document name, the extension `log` being added. The default directory of the log file is predefined:

- by the environment variable `XFileV5_TMP_DIR`
- or (in case of `XFileV5_TMP_DIR` variable not defined)  
by the CATIA environment variable `CATTemp`.

### ⑫ *Start* button

By pressing this button, the send operation is started.

The documents activated for sending and the XML file are copied into a temporary directory (depending on the selected option, either by normal copying or using the CATIA *Send To* functionality). This temporary directory by default is the CATIA temporary directory. With the CATIA `XFILEV5_TMP_DIR` environment variable a predefined directory can be specified. The files saved in the temporary directory then are packed in the specified container file, which is saved in the target directory. When this operation is finished, the temporary directory is deleted.

### ⑬ *XFileV5 Help* button

When this button is clicked, the XFILEV5 manual is opened (this manual).



For UNIX, the `XFILEV5_DOC` environment variable must also contain the command to launch ACROBAT READER and the path of the PDF manual file.

⑭



*Info* button

When this button is clicked, information about XFILEV5 (version number etc.) is displayed.

⑮

*Exit* button

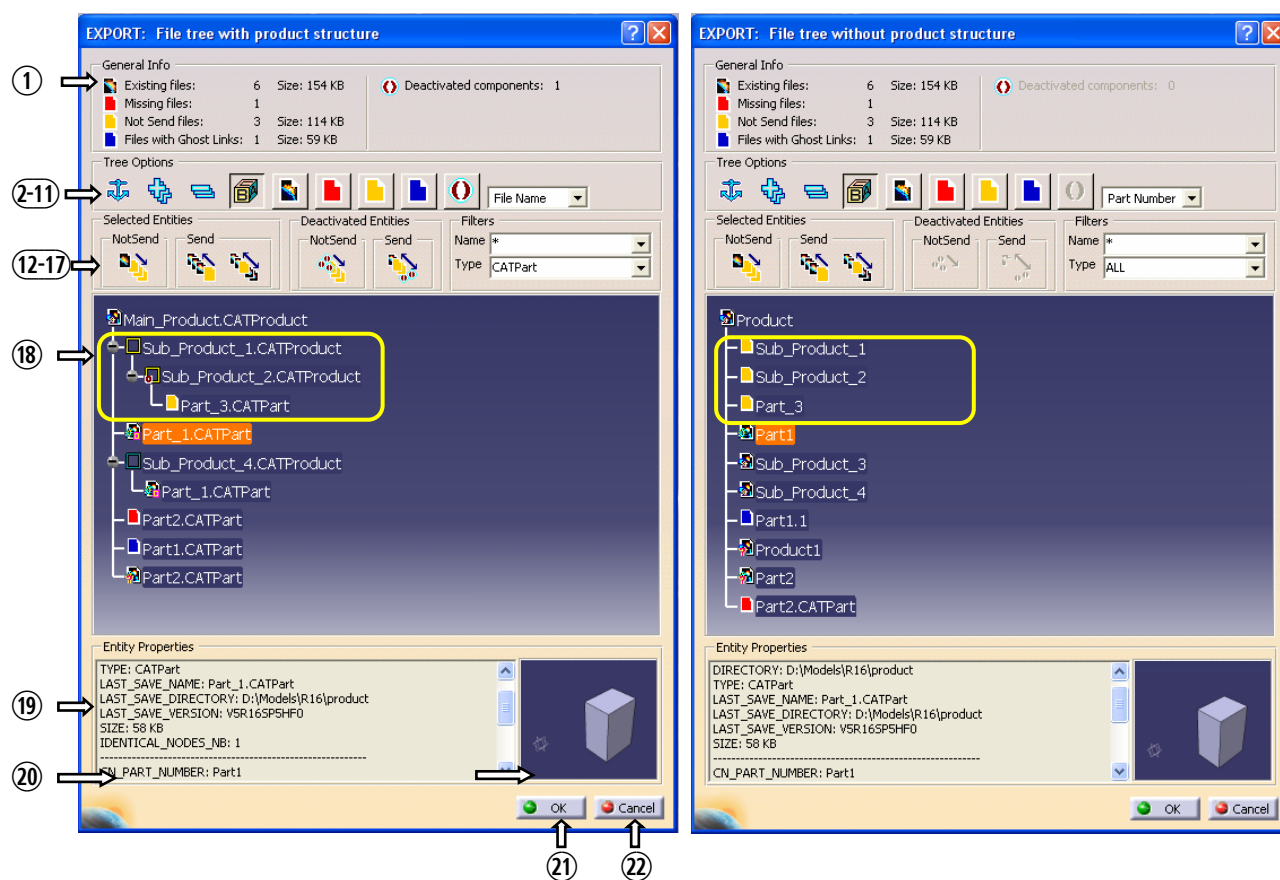
By pressing this button, the dialog box is closed, the settings made in the dialog box being saved in the `CATSetting` file.

• **Export file tree dialog box**

The *Export-file tree* dialog box displays the root product and all its child documents, giving an overview of the documents and their properties—especially if documents are missing or not, and allows to control which files are to be packed in the container file. Depending on whether the *Show product structure* check box (see page 14 item ⑨) was activated or not, the file tree may be displayed with hierarchical product structure (checked) or in flat structure (unchecked).

**File tree with hierarchical product structure**

**... without hierarchical structure**






**General info box**

- ① Here the number of existing, missing, not-to-send files and files with ghost links is displayed with their total size (for missing files a size can not be given).
  - Ⓜ If with the *Show product structure* check box ⑨ (page 14) the export was predefined with product structure, also the number of deactivated components is displayed (this is possible only in case a CATIA version is run R16 SP3 or higher).

### Tree options box

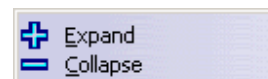
#### 2-4 Buttons for tree manipulation

- ②  *Anchor* button  
Pressing this button moves the root of the document tree to the left upper corner of the tree box.
- ③  *Expand all* button  
Pressing this button expands the document tree completely.
- ④  *Collapse all* button  
Pressing this button collapses the document tree completely.










#### TIPP:

For the selected elements the expand/collapse functionalities also are accessible over the context-sensitive menu.



#### 5-10 Visibility filter toggle switches

- ⑤  *Show/hide parameters* toggle switch  
When this button is pressed, the parameters of the documents are hidden; when it is not pressed, the parameters are shown (provided that the knots are expanded).
- ⑥  *Show/hide existing files* toggle switch  
When this button is pressed, the existing files are hidden. The root document never will be hidden.
- ⑦  *Show/hide missing files* toggle switch  
When this button is pressed, missing documents are hidden (if such exist).
- ⑧  *Show/hide not-to-send files* toggle switch  
When this button is pressed, documents with *NOT\_SEND* state (files that are not to be packed in the container file) are hidden (if such exist).
- ⑨  *Show/hide files with ghost-link* toggle switch  
When this button is pressed, files are hidden that have a ghost link (files having a blue icon, if such exist).
-  In case that the icon is grayed out, the *CATDUA for Ghost links analysis* check box ⑥ (see page 13) was not activated and no check for ghost links was executed.

⑩  *Show/hide deactivated components* toggle switch

When this button is pressed, deactivated components are hidden (if such exist).



The icon is grayed out when the file tree is displayed without product structure.



- Parent elements having unhidden children in every case will remain unhidden—as long as these children are not hidden.
- The root document never will be hidden.

⑪ *File name / Part number* list box

This list box is active if in the *Export* dialog box the *Show properties* check box ⑧ (see on page 14) is activated. In this check box, it can be selected which entity names are to display in the file tree—file names or part numbers.


### ***Selected entities box and Deactivated entities box***

⑫-16 Send/not send buttons

These buttons allow to control whether a document will be sent or not—the documents are switched between their initial state (no *NOT\_SEND* state, i. e. they will be sent) and the *NOT\_SEND* state (the documents will not be sent).

⑫  *Not send selection and children* button


By pressing this button the highlighted document and its children will be set to the *NOT\_SEND* state. (If the highlighted document has no children, only this highlighted document will be set to the *NOT\_SEND* state.)

⑬  *Send only selection* button


The highlighted document and its parents will be set back to *Send* state (i. e. their *NOT\_SEND* attribute is deleted).

⑭  *Send selection and children* button

The highlighted document and all its parents and children will be set back to the *SEND* state.

⑮  *Not send deactivated entities* button

Clicking on this button will switch deactivated components to the *NOT\_SEND* state.

⑯  *Send deactivated entities* button

Clicking on this button will switch deactivated components back to the *Send* state (i. e. they will be sent).

### ⑰ Filter combo boxes

With the *Name* and *Type* combo boxes the documents displayed in the *Document tree* box ⑱ can be filtered, i. e. the number of documents displayed will be restricted to the ones, having the selected or specified names and types.

- *Name* combo box:

- \* — all documents with any name are displayed.

Examples:

Printer\* — only documents with names beginning with “Printer” are displayed.

???\_Start — only documents with names beginning with any three characters and ending with “\_Start” are displayed.

- *Type* combo box:

- From the list one of different types of CATIA documents can be selected.

- In the box can be entered any document types. If entering several types, they must be semicolon separated.

Example:

CATProduct;CATPart;CATDrawing;doc;jpg — In the *Document tree* box documents of the CATIA types CATProduct, CATPart, CATDrawing, and also doc and jpg documents are displayed; other types are not displayed (being filtered out).

### Document tree box

- ⑱ Which elements of the document tree are displayed in the *Document tree* box depends on the selection made with the buttons or by means of the context-sensitive menu.

The file state icons may have additional marks:



(1) Pink square:



This mark prompts that the file exists in several instances. In the properties box ⑭ there is displayed the number of instances that exist beside the highlighted element itself

(e. g. in the screenshot above there is given the information IDENTICAL\_NODES\_NB. 1, what means that in total there are two instances in the file tree—the one highlighted and another one).



If all instances of an element have the not-send state, the pink square mark is not shown.



(2) The deactivated-element mark:

This mark (with dark-red brackets) prompts that the element is deactivated.



(3) Multi-model links

This mark (with question mark) prompts that the element has a multi-model link.



(4) Nod is shown compulsorily:

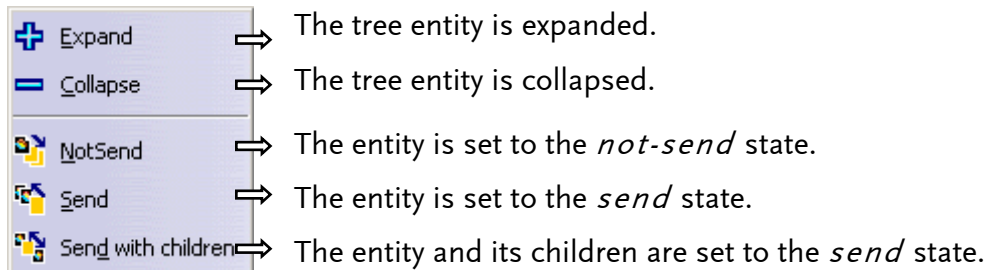
Due to filter settings, this nod normally would not be shown; as it is in top position, it is shown nevertheless.



(5) Nod is shown compulsorily and has not-send state:

Same as (4), but with not-send state.

Context-sensitive menu of the tree entities



### Properties box

⑲ This box displays the properties of the highlighted document.

### Preview box

⑳ When in the *Export* dialog box (see on page 11) the *Show preview* check box ⑦ (see on page 14) is activated, in this box for CATIA V5 model files a preview will be displayed. If for a file no preview is possible, a message will be displayed instead.

㉑ *OK* button

When this button is pressed, the tree dialog box is closed with saving the NOT\_SEND state settings.

㉒ *Exit* button

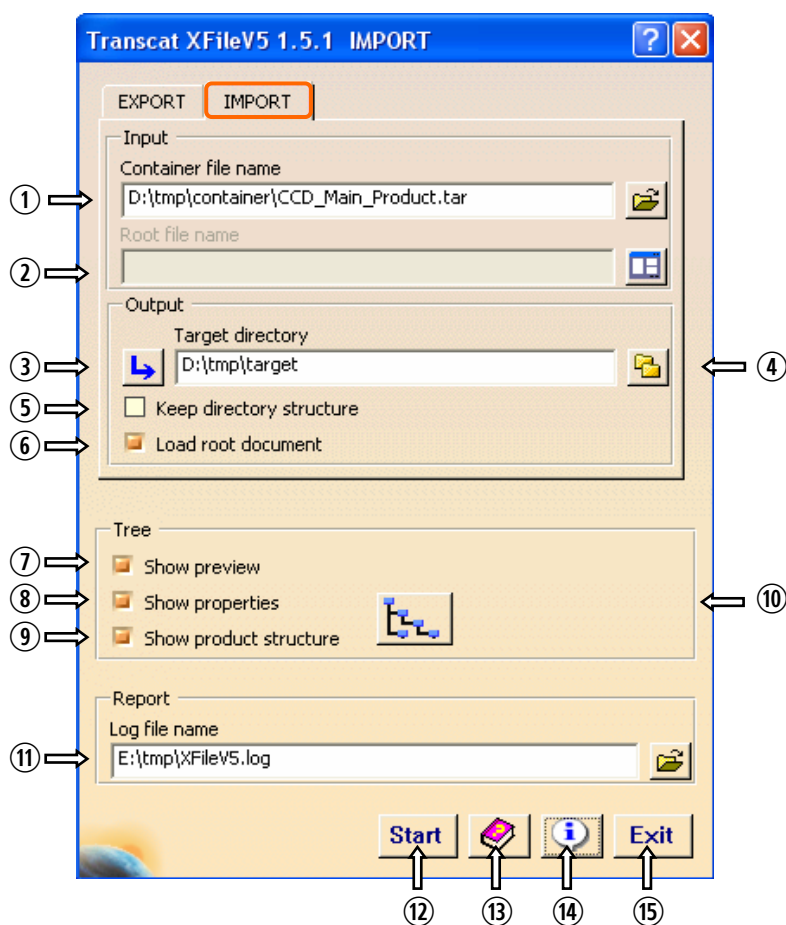
When this button is pressed, the tree dialog box is closed, the last NOT\_SEND state settings being discarded.

### 2.1.1.2 Import

The Import function provides the following functionalities (cf. fig. below):

- Selecting the input document to be imported
- Specifying the target directory
- Specifying the log-file name
- Defining whether the container file is only to be extracted or also is to be copied to the target directory.
- Specifying for interactive mode, whether the imported root document is to be opened for a CATIA session.

For import in every case the *Send To* method is used, ensuring adaptation of the link information to the new directory.



### Input box

- ① *Container-file name* text box and *Open file* button

These two elements allow to select the container file to be unpacked. The document name can be entered in the text box or can be selected with the *File selection* dialog box, which is opened after pressing the respective button. When reopening the dialog box for a new session, the text box is filled with the name of the container file from the preceding session.

- ② *Root-file name* text box and *Analyze container* button

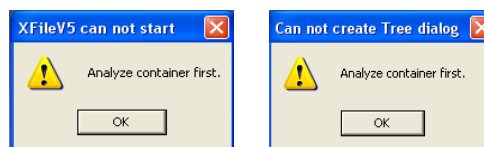
Two cases are possible:

- (1) In the *Container-file name* text box ① (above) an XFileV5 container has been specified *or*
- (2) an other container has been specified.

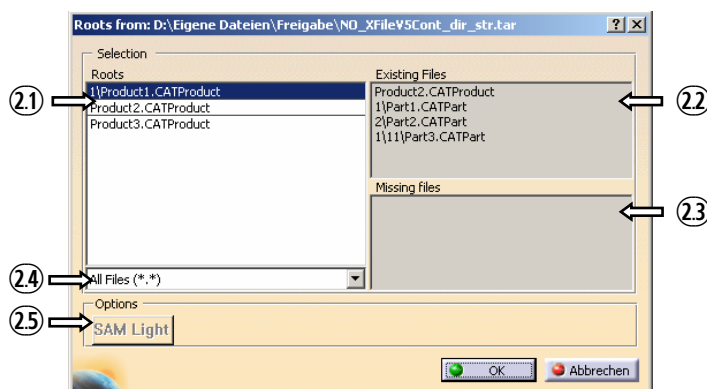
Ad (1): In the *Root-file name* text box, *no* name is specified (as in XFILEV5 containers only one root file is available). Clicking the *Analyze container* button will result in a message displayed that the selected container is an XFILEV5 container.

Ad (2): In case that an other container has been specified, it needs to be analyzed.

Clicking on the Start button ⑫ (see below on page 23) or *Show Tree* Dialog button ⑩ (see below on page 23) without having analyzed the container will trigger warning messages.



To analyze the container click the *Analyze container* button. This opens the Container analysis window.



②① In the *Root selection* box the required root document is to be selected.

②② In the *Existing files* box, it can be verified which files relate to the selected root document.

②③ In the *Missing files* box the names of documents are displayed that are linked to the selected root document, but are missing.

②④ The *Filter* list box allows to restrict the display in the *Root* selection box to the documents of one only document type.

②⑤ With the *SAM Light* button, the SAM LIGHT application is started. This button is active only in case that the container contains a file of the \*.stp type.

Clicking the *OK* button will close this dialog box, taking over the selected root document name in the *Root-file name* text box ② (see above on page 21).

## Output box

### ③ *Taking over* button

If this button is clicked, from the *Container-file name* text box ① (see above) the long path name is taken over as target directory name. If a container has no .tar extension, a suffix is appended, which is predefined in the XFILEV5 administration file (keyword `imp_target_dir_suffix`).

### ④ *Target directory* text box and *Directory selection* button

These elements allow to select the target directory where the unpacked files are to be saved. The directory name can be entered in the text box or can be selected with the dialog box, which is opened after pressing the *Directory selection* button.

With the `XFILEV5_IMP_TARGET_DIR` environment variable a directory can be predefined.

⑤ *Keep directory structure* check box

If this check box is activated, the *Send-to* method will be applied with keeping the directory structure. If the container to import contains no directory structure, the *Send-to* method will be applied without directory structure.

The state for this check box depends on the setting made for the keyword `xfilev5.IMP_KEEP_DIR_DLG` (cf. page 36).

⑥ *Load root document* check box

This option is available only for Interactive Mode. If it is activated, the import operation will be completed with opening the imported root document in CATIA.

**Tree box**⑦ *Show preview* check box

If this option is activated, in the *Import File Tree* dialog box (see on page 25 on page 16) the *Preview* box ⑩ (see page 28) will be activated.

Note: If a directory is write-protected, a preview of the files in it cannot be given.

⑧ *Show properties* check box

If this option is activated, in the *Import File Tree* dialog box the properties of the highlighted component will be displayed.

⑨ *Show product structure* check box

This check box controls whether in the *Import File Tree* dialog box (see above on page 16) the documents will be shown in a (simplified) hierarchical product structure or only in a flat structure.

⑩  *Show Tree Dialog* button

By pressing this button the import container is unpacked and the *Import file tree* dialog box is opened—see section *Import File Tree* dialog box (page 25). The icon on the button prompts in which structure the file tree will be shown (hierarchical or flat).

**Report box**⑪ *Log-file name* text box and *Open file* button

These two elements allow to specify the log file document. The document name can be entered in the text box or can be selected with the *File selection* dialog box, which is opened after pressing the respective button.

By default this text box is filled with a name identical to the root-document name, the extension `log` being added. The default directory of the log file is predefined:

- by the environment variable `XFileV5_TMP_DIR`
- or (in case of `XFileV5_TMP_DIR` variable not defined) by the CATIA environment variable `CATTemp` .

⑫ *Start* button

By pressing this button, the import operation is started.

The import operation comprises the following steps: The container file selected for import will be unpacked in a temporary directory (if before the *Show Tree Dialog* button ⑩ [page 23] not had already been pressed so that the unpacking operation already had been executed). The completeness of the file set will be checked by comparing the file set with the XML file information (in case of missing files a warning message will be displayed). The files will be transferred into the target directory and the link information is adapted to the new directory, using CATIA *Send To* method. For Interactive Mode, in case of activated *Load root document* option, the import operation will be completed with opening the root document in CATIA. This will close the XFILEV5 program.

- ⑬  *XFileV5 Help* button

When this button is clicked, the XFILEV5 manual is opened (this manual).



For UNIX, the XFILEV5\_DOC environment variable must also contain the command to launch ACROBAT READER and the path of the PDF manual file.

- ⑭  *Info* button

When this button is clicked, information about XFILEV5 (version number etc.) is displayed.

- ⑮ *Exit* button

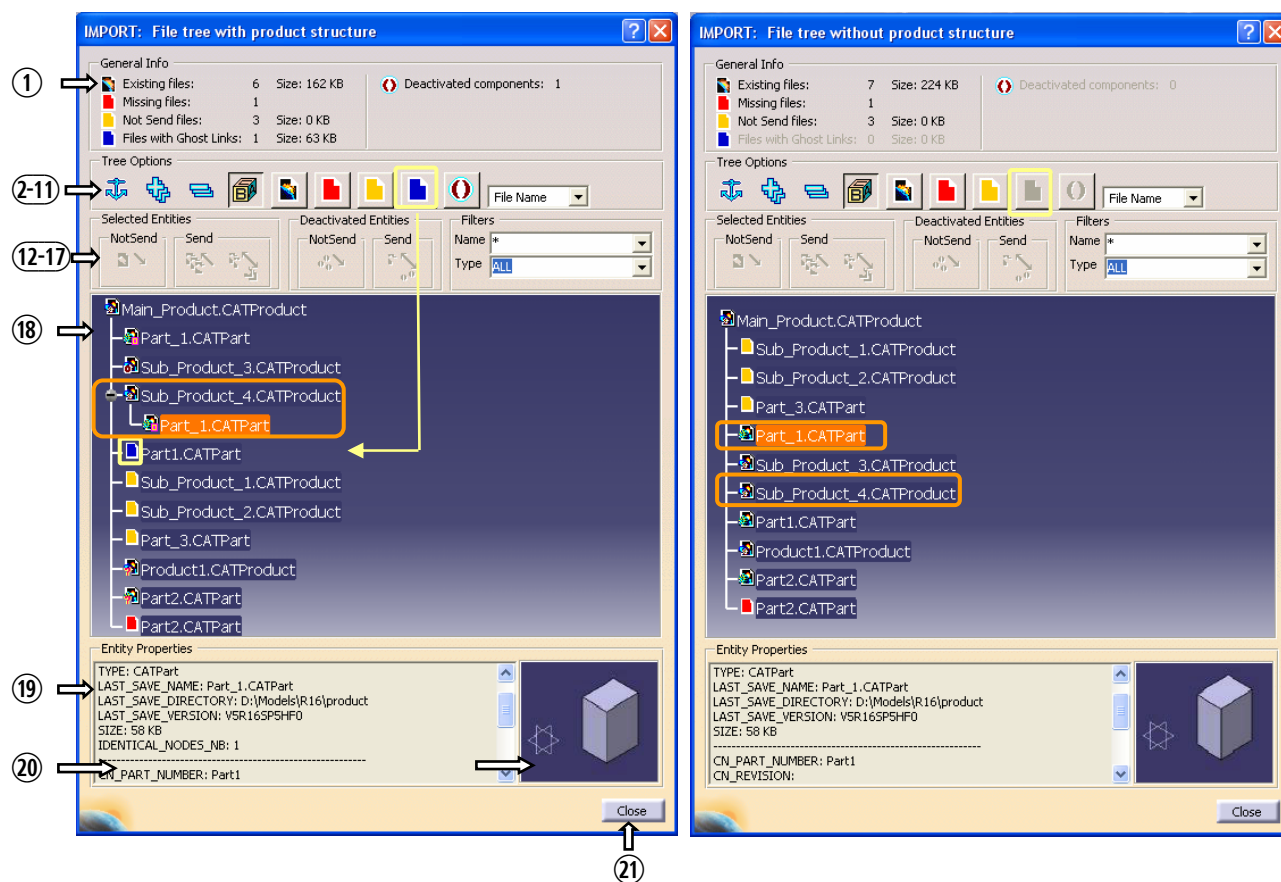
By pressing this button, the dialog box is closed, the settings made in the dialog box being saved in the CATSetting file.

• **Import File Tree dialog box**

The *Import-file-tree* dialog box displays the files of the directory of the unpacked import container—root product and all its child documents, giving an overview of the documents and their properties—especially if documents are missing or not, and allows to see which files are imported. This dialog box gives only an overview of the files to import, but it does not provide tools controlling the import.

**File-tree with elements checked previously for ghost links**

**... not checked previously**



**General info box**




① **General info box**

Here the number of existing, missing, not-to-send files and files with ghost links is displayed with their total size (for missing files a size can not be given).

Ⓣ If with the *Show product structure* check box ⑨ (page 14) the export was predefined with product structure, also the number of deactivated components is displayed (this is possible only in case a CATIA version is run R16 SP3 or higher). The number of deactivated components is not displayed.

### Tree options box

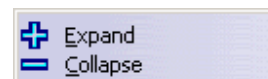
#### 2-4 Buttons for tree manipulation

- ②  *Anchor* button  
Pressing this button moves the root of the document tree to the left upper corner of the tree box.
- ③  *Expand all* button  
Pressing this button expands the document tree completely.
- ④  *Collapse all* button  
Pressing this button collapses the document tree completely.










#### TIPP:

For the selected elements the expand/collapse functionalities also are accessible over the context-sensitive menu.



#### 5-10 Visibility filter toggle switches

- ⑤  *Show/hide parameters* toggle switch  
When this button is pressed, the parameters of the documents are hidden; when it is not pressed, the parameters are shown (provided that the knots are expanded).
- ⑥  *Show/hide existing files* toggle switch  
When this button is pressed, the existing files are hidden. The root document never will be hidden.
- ⑦  *Show/hide missing files* toggle switch  
When this button is pressed, missing documents are hidden (if such exist).
- ⑧  *Show/hide not-to-send files* toggle switch  
When this button is pressed, documents with *NOT\_SEND* state (files that are not to be packed in the container file) are hidden (if such exist).
- ⑨  *Show/hide files with ghost-link* toggle switch  
When this button is pressed, files are hidden that have a ghost link (files having a blue icon, if such exist).
-  In case that the icon is grayed out, the sender, while exporting the files, did not execute the *CATDUA for Ghost links analysis* (for details see *Export* dialog box—*CATDUA for Ghost links analysis* check box ⑥ on page 13).

⑩  *Show/hide deactivated components* toggle switch

When this button is pressed, deactivated components are hidden (if such exist).



The icon is grayed out when the file tree is displayed without product structure.



- Parent elements having unhidden children in every case will remain unhidden—as long as these children are not hidden.
- The root document never will be hidden.

⑪ *File name / Part number* list box

This list box is active if in the *Export* dialog box the *Show properties* check box ⑧ (see on page 14) is activated. In this check box, it can be selected which entity names are to display in the file tree—file names or part numbers.

***Selected entities* box and *Deactivated entities* box**

⑫-⑯ Send/not send buttons

These buttons for import are not active.

⑰ *Filter* combo boxes With the *Name* and *Type* combo boxes the documents displayed in the *Document tree* box ⑱ can be filtered, i. e. the number of documents displayed will be restricted to the ones, having the selected or specified names and types.

• *Name* combo box:

\* — all documents with any name are displayed.

Examples:

Printer\* — only documents with names beginning with “Printer” are displayed.

??\*\_Start — only documents with names beginning with any three characters and ending with “\_Start” are displayed.

• *Type* combo box:

— From the list one of different types of CATIA documents can be selected.

— In the box can be entered any document types. If entering several types, they must be semicolon separated.

Example:

CATProduct ; CATPart ; CATDrawing ; doc ; jpg — In the Document tree box documents of the Catia types CATProduct, CATPart, CATDrawing, and also doc and jpg documents are displayed; other types are not displayed (being filtered out).

### Document tree box

- ⑱ Which elements of the document tree are displayed in the *Document tree* box depends on the selection made with the buttons or by means of the context-sensitive menu.

The file state icons may have additional marks:



- (1) Pink square:



This mark prompts that the file exists in several instances. In the properties box ⑭ there is displayed the number of instances that exist beside the highlighted element itself

(e. g. in the screenshot above there is given the information IDENTICAL\_NODES\_NB. 1, what means that in total there are two instances in the file tree—the one highlighted and another one).



If all instances of an element have the not-send state, the pink square mark is not shown.



- (2) The deactivated-element mark:

This mark (with dark-red brackets) prompts that the element is deactivated.



- (3) Multi-model links

This mark (with question mark) prompts that the element has a multi-model link.



- (4) Nod is shown compulsorily:

Due to filter settings, this nod normally would not be shown; as it is in top position, it is shown nevertheless.



- (5) Nod is shown compulsorily and has not-send state:

Same as (4), but with not-send state.

### Properties box

- ⑱ This box displays the properties of the highlighted document.

### Preview box

- ⑲ When in the *Import* dialog box the *Show preview* check box ⑦ (see on page 23) is activated, in this box for CATIA V5 model files a preview will be displayed. If for a file no preview is possible, a message will be displayed instead.
- ⑳ *Close* button
- When this button is pressed, the tree dialog box is closed.

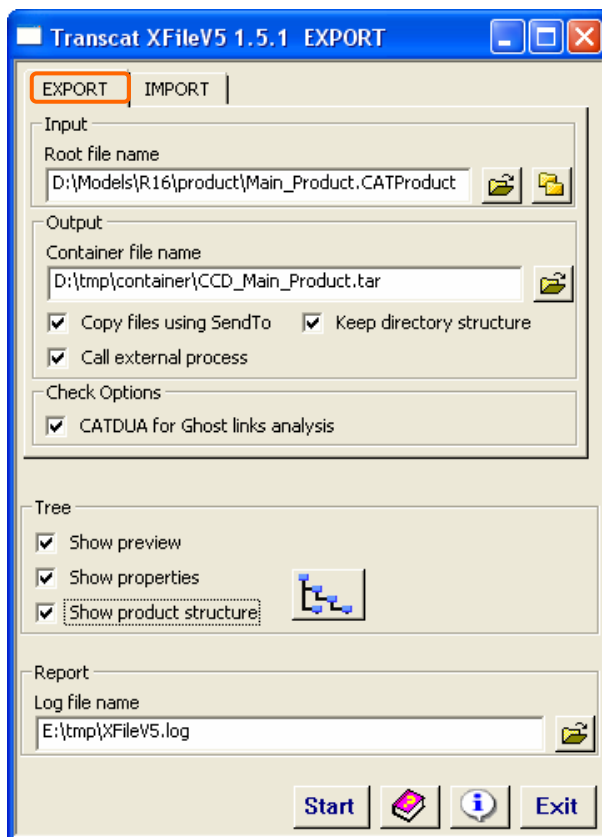
## 2.1.2 Utility Mode

### 2.1.2.1.1 Export & ...

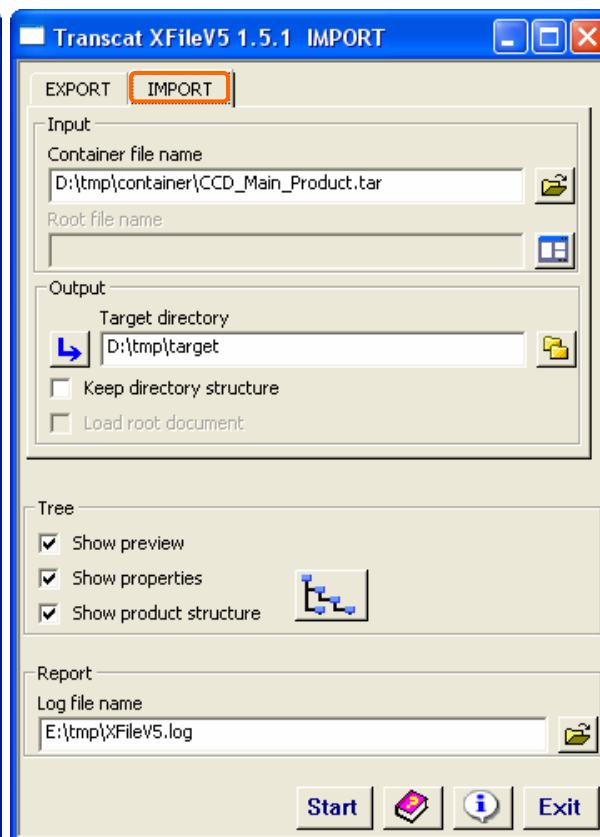
#### 2.1.2.1.2 Import

The Utility Mode provides the advantage that export/import operation can be executed outside of CATIA (i. e. without starting CATIA). Beside of that and despite the slightly different optical aspect of the GUIs, the export and import functionalities of the Utility Mode and the structure of the respective windows are identical with those of the Interactive Mode—thus the detailed description in sections 2.1.1.1 *Export* (starting from page 10) and 2.1.1.2 *Import* (starting on page 20) applies also for the Utility Mode.

#### ► Export



#### ► Import



### 2.1.3 Batch Mode

- General Options


TCAXFileV5BatchMd -?|-h|-help    Displaying help information.

TCAXFileV5BatchMd -v|-version    Displaying the version number of the program.

#### 2.1.3.1 Export

- Input on the Command Line—Syntax

```
<CATIA_install-path>\code\bin\catstart -env environmentName -direnv environmentDirectory -run
"TCAXFileV5BatchMd -exp -r rootfilePathName -x xmlReportPathName
-c containerPathName -l logFile [-s] [-p previewFormat] [-catdua]
[-keepdir]"
```

TCAXFileV5BatchMd	Program name	
	Environment:	In case that the CATIA V5 environment not has been set yet:
-env environmentName	• Environment name:	• Write the name of the of XFILEV5 environment.
-direnv environmentPath	• Environment path:	• Write the full path of the environment.
-exp	Start export.	
-r rootfilePathName	Path and name of the root file:	• Write -r followed by blank and full path name of the root file.
-x xmlReportPathName	Path and name of the XML report file	• Write -x followed by blank and full path name of the XML report file to be created—if you want to create only an XML report file
-c containerPathName	Path and name of the container file to create:	• Write -c followed by blank and full path name of the container file to be created (backslash/ slash included!)—if you want to create a container file with XML report file included in it.
	 <b>Alternatives</b> using -x and -c	Export options: (1) When using -r and -x, only an XML report file will be created. (2) When using -r and -c, a container file will be created, containing the exported files and the XML report file in it. (3) When using -x and -c, a container file will be created on the base of the information in the XML report file. (In this case, the option -r is not used.)
[-s]	Copying files using CATIA Send To method	<i>Optional.</i> If this option is set, for copying the CATIA Send To method will be used. This setting will be ignored in case of exporting only an XML file (export option 1).

<code>-l logFile</code>	Path and name of the log file	Write: <code>-l</code> followed by blank and full path where the log file is to be created. If the <code>-l</code> option is not specified by the user; nevertheless a log file will be created in a default path, the name of the path being displayed on the console.
<code>[-p previewFormat]</code>	Creating previews of the exported CATIA files	<i>Optional</i> . If this option is set, for every exported CATIA file a preview will be created. Write instead of <code>previewFormat</code> the required format code ( <code>jpg</code> , <code>bmp</code> , <code>tif</code> , or <code>png</code> ). This setting will be ignored in case of the exporting only an XML file (export option 1). <b>Note:</b> If a directory is write-protected, a preview of the files in it cannot be given.
<code>[-catdua]</code>	Check whether exist files with ghost links	<i>Optional</i> . In case that files with ghost links exist, a warning will be written in the log file (return code 5).
<code>[-keepdir]</code>	Send-to method with keeping directory structure	<i>Optional</i> . The Send-to method will be applied with keeping the directory structure. This option is operationally only if also the <code>[-s]</code> option is activated.



Hint:

For batch export DLNames can be used.

## • Syntax Examples

### ▷ Export option 1 (XML file export):

```
<CATIA_install-path>\code\bin\catstart -env environmentName -direnv environmentDirectory
-run "TCAXFileV5BatchMd
-exp -r /V5Models/RootFile.CATProduct
-x /tmp/report.xml -l /tmp/log.txt"
```

### ▷ Export option 2 (export of container file from XML file):

```
<CATIA_install-path>\code\bin\catstart -env environmentName -direnv environmentDirectory
-run "TCAXFileV5BatchMd -exp -x /tmp/report.xml
-c /ContainerPath/ContainerName.tar
-l /tmp/log.txt"
```

### ▷ Export option 3 (export of container file from CATIA file):

```
<CATIA_install-path>\code\bin\catstart -env environmentName -direnv environmentDirectory
-run "TCAXFileV5BatchMd -exp
-r /V5Models/RootFile.CATProduct
-c /ContainerPath/ContainerName.tar
-l /tmp/log.txt"
```

### 2.1.3.2 Imaport

#### • Input on the Command Line—Syntax

```
<CATIA_install-path>\code\bin\catstart -env environmentName -direnv environmentDirectory
-run "TCAXFileV5BatchMd -imp -c containerFileName [-t targetPath]
-l logFile [-p previewFormat] [-notow] [-keepdir]"
```

<code>TCAXFileV5BatchMd</code>	Program name	
	Environment:	In case that the CATIA V5 environment not has been set yet:
<code>-env environmentName</code>	• Environment name:	• Write the name of the of CATIA V5 environment (XFILEV5 environment is a part of it).
<code>-direnv environmentPath</code>	• Environment path:	• Write the full path of the environment.
<code>-imp</code>	Start import.	
<code>-c containerPathName</code>	Path and name of the container file to import:	Write <code>-c</code> followed by blank and full path name (included file name) of the container file to import
<code>[-t targetPath]</code>	Target path:	<i>Optional.</i> Write <code>-t</code> followed by blank and the path name of the target path. Import options: (1) If <i>no</i> target path is specified, the container file will be opened in its original directory. (2) If a target path is specified, the container file will be opened in this directory.
<code>-l logFile</code>	Path and name of the log file.	Write: <code>-l</code> followed by blank and full path (included file name) for the log file to create. If the <code>-l</code> option is not specified by the user; nevertheless a log file will be created in a default path, the name of the path, being displayed on the console.
<code>[-p previewFormat]</code>	Creating previews of the imported CATIA files.	<i>Optional.</i> If this option is set, for every imported CATIA file a preview will be created. Write instead of <code>previewFormat</code> the required format code ( <code>jpg</code> , <code>bmp</code> , <code>tif</code> , or <code>png</code> ). Note: If a directory is write-protected, a preview of the files in it cannot be given.
<code>[-notow]</code>	Do not overwrite existing files.	If this option is used, in case of import option 2 (import in a specified directory) the existing files in this directory will not be overwritten.
<code>[-keepdir]</code>	Send-to method with keeping directory structure	<i>Optional.</i> The Send-to method will be applied with keeping the directory structure. This option is ignored if container has no directory structure.



#### Note:

- For batch import in every case the *Send To* method is used, ensuring adaptation of the link information to the new directory.



#### Hint:

For batch import DLNames can be used.

- **Syntax Examples**

▷ Import option 1 (Opening container file in its original directory):

```
<CATIA_install-path>\code\bin\catstart -env environmentName -direnv environmentDirectory  
-run "TCAXFileV5BatchMd -imp  
-c /V5Models/containerName.tar -l /tmp/log.txt"
```

▷ Import option 2 (Opening container file in specified directory):

```
<CATIA_install-path>\code\bin\catstart -env environmentName -direnv environmentDirectory  
-run "TCAXFileV5BatchMd -imp  
-c /V5Models/containerName.tar  
-t /V5Models/targetPath -l /tmp/log.txt"
```

### 2.1.4 File Description—XFileV5.par

- Sample, explaining the file structure

In the XFileV5.par file every keyword with set value is preceded by explaining information, given in the following order:

# Define the maximal length of the container name	← (1) Description
# Allowed values: integer > 0	← (2) Allowed values
# Default: 100	← (3) Default value
xfilev5.EXP_MAX_CONTAINER_NAME 100	← (4) Keyword with default value

- Used keywords and their description

Keyword	Allowed Values	Description
xfilev5.EXP_MAX_CONTAINER_NAME	Integer > 0 (default: 100)	Number of allowed characters of the container name
xfilev5.EXP_CONTAINER_NAME_FORMAT		Definition of the format of the container name. The values also may be given in form of a string (example: CCD_%ROOT%_%DAY%_text).
	%ROOT% (default)	• Placeholder for the name of the root file
	%YEAR%	• Placeholder for the year
	%MONTH%	• Placeholder for the month
	%DAY%	• Placeholder for the day
	%HOUR%	• Placeholder for the hour
	%MIN%	• Placeholder for the minutes
	%SEC%	• Placeholder for the seconds
xfilev5.EXP_CONTAINER_DEF_TAR_EXTENSION	%USER%	• Placeholder for the user name
		Definition of the container extension
xfilev5.EXP_CONTAINER_DEF_TAR_EXTENSION	YES (default)	• tar extension
	NO	• No extension
xfilev5.EXP_CONTAINER_DEF_TAR_EXTENSION		Copying the XML file to target directory (together with the CATIA documents)
	YES	• The XML file is also copied to the target directory.
xfilev5.EXP_SEND_TO_DLG	NO (default)	• The XML file is not copied to the target directory.
		State of the <i>SendTo</i> check box (interactive mode, see page 13 point ③):
	BOTH	• State is fully user-controlled.
	ON (default)	• ... always ON; user cannot switch to OFF.
	OFF	• ... always OFF; user cannot switch to ON.
	DEFAULT_ON	• ... ON by default; user can switch to OFF.
	DEFAULT_OFF	• ... OFF by default; user can switch to ON.

Keyword	Allowed Values	Description
xfilev5.EXP_KEEP_DIR_DLG		State of the <i>Keep directory structure</i> check box on the <i>Export</i> dialog box for the interactive mode (see page 13—④).
	BOTH	• State is fully user-controlled.
	ON	• ... always ON; user cannot switch to OFF.
	OFF (default)	• ... always OFF; user cannot switch to ON.
	DEFAULT_ON	• ... ON by default; user can switch to OFF.
DEFAULT_OFF	• ... OFF by default; user can switch to ON.	
xfilev5.EXP_XML_NAME_FORMAT		Format definition of the output XML file name. The values also may be given in form of a string (example: CCD_%ROOT%_%DAY%_text).
	%ROOT% (default)	• Placeholder for the name of the root file
	%YEAR%	• Placeholder for the year
	%MONTH%	• Placeholder for the month
	%DAY%	• Placeholder for the day
	%HOUR%	• Placeholder for the hour
	%MIN%	• Placeholder for the minutes
	%SEC%	• Placeholder for the seconds
%USER%	• Placeholder for the user name	
xfilev5.IMP_OVERWRITE_EXTRACT_DLG		<i>Overwrite with unpacked files</i> dialog box:
	YES	• Display window.
	NO (default)	• Do not display window. Overwrite directory if exist.
xfilev5.EXP_EXTERNAL_PROCESS_ARG		External process arguments:
	%RETURN%	• Return code
	%CONTAINER%	• Container file path name
	%USER%	• User name
xfilev5.EXP_EXTERNAL_PROCESS_WAIT	%LOG%	• Log-file path name
	YES (default)	• XFileV5 waits for the end of the external process.
xfilev5.EXP_EXTERNAL_PROCESS_WAIT	NO	• XFileV5 does not wait for the end of the external process.
	Integer > 0 (default: 512)	Maximum size (in MB) of the loaded file(s).
xfilev5.IMP_TARGET_DIR_SUFFIX		Format definition of the target directory suffix in case of "extract only" option <sup>(*)</sup> used (only if container name has no extension) (example: %DAY%_%MONTH%_text).
	%YEAR%	• Placeholder for the year
	%MONTH%	• Placeholder for the month
	%DAY%	• Placeholder for the day
	%HOUR%	• Placeholder for the hour
	%MIN%	• Placeholder for the minutes
	%SEC%	• Placeholder for the seconds
%USER%	• Placeholder for the user name	

Keyword	Allowed Values	Description
xfilev5.EXP_READ_REC_ROOTS_FROM_DIR		Reading roots within the selected directory recursively (i. e. all roots of all levels) or not:
	YES (default)	<ul style="list-style-type: none"> <li>• Roots are read recursively.</li> </ul>
xfilev5.EXP_SEARCH_INSIDE_ROOT_DIR	NO	<ul style="list-style-type: none"> <li>• Only roots from first level are read.</li> </ul>
	NO (default)	<ul style="list-style-type: none"> <li>• Use <i>Tools &gt; Options</i> settings.</li> </ul>
	YES	<ul style="list-style-type: none"> <li>• Search components only inside root directory.</li> </ul>
xfilev5.IMP_KEEP_DIR_DLG	YES_REC	<ul style="list-style-type: none"> <li>• Search recursively components inside root directory.</li> </ul>
		State of the <i>Keep directory structure</i> check box on the <i>Import File Tree</i> dialog box for the interactive mode, see page 23—(5).
	BOTH	<ul style="list-style-type: none"> <li>• State is fully user-controlled.</li> </ul>
	ON	<ul style="list-style-type: none"> <li>• ... always ON; user cannot switch to OFF.</li> </ul>
	OFF	<ul style="list-style-type: none"> <li>• ... always OFF; user cannot switch to ON.</li> </ul>
	DEFAULT_ON	<ul style="list-style-type: none"> <li>• ... ON by default; user can switch to OFF.</li> </ul>
DEFAULT_OFF (default)	<ul style="list-style-type: none"> <li>• ... OFF by default; user can switch to ON.</li> </ul>	

(\*) The *Extract only* option is applied automatically by XFILEV5 if in batch mode no target directory is specified. In this case XFILEV5 creates inside the container directory a directory having the container name.

## 2.2 License Management

For working with XFILEV5 (as well as for working with the other tools of the XFILEV5 pack) CATIA PX1 license is required.

The Batch Mode uses this license only for the operation time and releases the license when operation is completed.

In order to restrict the time of use of the PX1 license in Interactive and Utility Modes, a CATIA session can be started using no PX1 license. XFILEV5 in this case automatically starts, for the operations requiring PX1 license, in background an XFILEV5 batch session. For that purpose the XFILEV5\_ENV and XFILEV5\_DIRENV environment variables must point to an environment with PX1 license. (Cf. XFILEV5 installation manual.)

## 2.3 XFILEV5 Output Information

### 2.3.1.1 XML File

The XML file contains information about the root document and its referenced documents. It is structured on two levels. The first level is for the root document, the second for the referenced documents. Following attributes are defined for the nodes:

Attribute	Description	
NAME	Current document name	
DIRECTORY	Name of the directory of the current document	
TYPE	<ul style="list-style-type: none"> <li>For CATIA V5 documents: CATIA V5 document type—independent of the file extension.</li> <li>For non CATIA V5 documents: the file extension (without checking the real file type, except for non CATIA V5 documents with a CATIA V5 file extension, which will get the value „NotAV5File“).</li> </ul>	
LAST_SAVE_NAME	File name at last save with CATIA V5	
LAST_SAVE_DIRECTORY	Directory name at last save with CATIA V5	
LAST_SAVE_VERSION	CATIA V5 version at last save with CATIA V5	
	For V5R9 or lower:	The value is NOT_AVAILABLE.
	For V5R10 or higher:	Version, Release und Service Pack.
	For V5R14 or higher:	Additionally Hot Fix.
	<p>Note:</p> <p>NOT_AVAILABLE:            Following attributes can not be determined for CATIA V5R9 and lower or non CATIA documents: LAST_SAVE_NAME, LAST_SAVE_DIRECTORY, LAST_SAVE_VERSION.            These attributes have the value NOT_AVAILABLE.</p>	
STATUS	EXISTING: Referenced document is available.	



### 2.3.1.2 Log File for XFILEV5

The log file is a text file containing the following information:

- Program version number
- Issued command
- Root document
- A list of all processed documents
- A list of missing files
- A list of documents deactivated for sending
- A list of files with ghost links
- A list of not overwritten files (for import only)
- Information on general errors (e. g. no write access on target directory)
- Return code

### 2.3.1.3 Return Codes for XFILEV5

Code	Explication
0	Process OK
1	Wrong arguments
2	Internal error
3	No PX1 license available.
4	Documents missing.
5	CATDUA link analysis is recommended.
7	No TC-XFileV5 license available.

→ For CV5 CONSISTENT FILE SET return codes see section 3.2.3 Return Codes for CV5 CONSISTENT FILE SET on page 48.

## 3. CV5 CONSISTENT FILE SET in Detail

CV5 CONSISTENT FILE SET is a command line based checking tool that controls the consistency of CATIA V5 document sets in a specified directory. The tool is primarily intended to be used to check incoming and outgoing CATIA V5 document sets on their consistency.

A consistent set of CATIA V5 documents contains:

- One or more root documents (i.e. documents that are themselves not a link target, but may be a link source):
  - CATProduct, CATPart, CATDrawing etc.,
  - Non-CATIA V5 documents,
- Non-root documents (CATIA V5 / non-CATIA V5 documents that are link targets of the root documents of the document set).

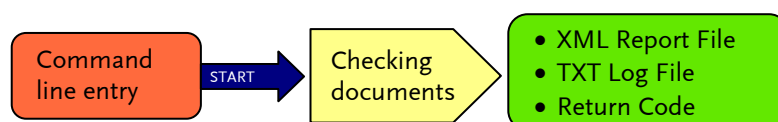
The file set is consistent if it contains all documents that are linked with each other.



Note:

CV5 CONSISTENT FILE SET also checks links to other directories outside of the checked directory. In the check result, however, it is not expressly stated that the link target is situated outside of the checked directory.

### Check Operation



CV5 CONSISTENT FILE SET checks all files contained in a specified directory to find out whether the document set in it is consistent, and eventually generates one or two report files in XML format, a text log file and returns an error code.

CV5 CONSISTENT FILE SET identifies missing documents and writes additional information to the report file (e.g. CATIA version at last save and document type for CATIA V5 documents). Optionally the CV5 CONSISTENT FILE SET also identifies naming conflicts for renamed CATIA V5 documents.

## Detailed Description of Check Operation

CV5 CONSISTENT FILE SET executes the following steps:

- Retrieving recursively the CATIA V5 documents, starting from the directory specified in the command issued, and then checking all its sub-directories.
- Retrieving information of the documents:
  - Document type
  - Document directory

and for CATIA V5 additionally:

- CATIA version at last save
- Last-save name
- Last-save directory.
- Identifying all the root files.
- Identifying for each root file the associated set of documents and checking it regarding consistency.
- Finding out whether documents are missing in the file set:
  - Not existing (renamed or removed)
  - Renamed.
- Writing a structured (XML) report of the document set and—optionally—writing a structured (XML) “Resolved” report of the document set for renamed documents.
- Writing an error log file.

### Details:

- **Document type check**

CV5 CONSISTENT FILE SET checks CATIA V5 documents of the following types whether they have correct names and name extensions:

- CATProduct
- CATPart
- CATDrawing
- CATProcess
- CATAnalysis
- CATMaterial
- catalog

In case of not corresponding names and name extension, information will be written in the XML report file.

For all other files of non-CATIA types this check has no effect (for instance, a jpeg graphic file with a txt extension would not be found out as having a faulty name extension).

- **Link check**

As a result of the check the links between the documents and missing linked documents are reported. The following links are considered:

- Links from CATIA V5 documents to other CATIA V5 documents,
- Links from CATIA V5 documents to other non-CATIA V5 documents.

Links from non-CATIA V5 documents to non-CATIA V5 documents are not checked.

- **Report file vs. Resolved Report file**

Both are XML files. The difference between these files is as follows.

Report type	Representation of renamed files	Displayed state information
<b>Report file:</b>	A renamed file that has lost its link is represented as root file.	EXISTING
<b>Resolved Report file:</b>	A renamed file that has lost its link is represented as linked document file (on its original position, i.e. under the correct root file)	RENAMED

## 3.1 How to Work

### • Input on the Command Line—Syntax

```
<CATIA_install-path>\code\bin\catstart -env environmentName
                                         -direnv environmentDirectory -run
                                         "TCAXFileV5CfsMd -d inputDirectory -o reportFile
                                         [-r resolvedReportFile] -l logFile"
```

TCAXFileV5CfsMd	Program name:	<ul style="list-style-type: none"> <li>• Write: TCAXFileV5CfsMd (Cfs stands for CONSISTENT FILE SET)</li> </ul>
	Environment:	In case that the CATIA V5 environment not has been set yet:
-env environmentName	• Environment name:	<ul style="list-style-type: none"> <li>○ Write the name of the of CV5 CONSISTENT FILE SET environment.</li> </ul>
-direnv environmentPath	• Environment path:	<ul style="list-style-type: none"> <li>○ Write the full path of the environment.</li> </ul>
-d inputDirectory	Input directory:	<ul style="list-style-type: none"> <li>• Write: -d followed by blank and full path name of the directory to check.</li> </ul>
-o reportFile	Report file:	<ul style="list-style-type: none"> <li>• Write: -o followed by blank and full path name of the XML report file to be created.</li> </ul>
[-r resolvedReportFile]	Resolved report file:	<ul style="list-style-type: none"> <li>• <i>Optional</i> Write: -r followed by blank and full path name of the XML resolved report file is to be created.</li> </ul>
-l logFile	Log file:	<ul style="list-style-type: none"> <li>• Write: -l followed by blank and full path where the log file is to be created.</li> </ul>
[-scs]		<ul style="list-style-type: none"> <li>• <i>Optional</i> Files are searched according to the CATIA settings under <i>Tools &gt; Options &gt; Linked Document Localization</i>.</li> </ul>
[-scr]		<ul style="list-style-type: none"> <li>• <i>Optional</i> If this parameter is not set, child documents, which have the same document name and the same localization as the parent root document, are not taken into account.</li> </ul>

(In case of certain contextual links a root product itself may also be child To exclude this case from checking, the parameter [-scr] is to be omitted.)



#### Note:

- Full path means file based—DLNames cannot be used.
- Input directory: Sub-directories included in the input directory also will be checked.

## 3.2 The Check Results

The check results are delivered in form of

- a log file,
- a report and—optionally—a “Resolved” report file and
- a return code.

In the following sections these results will be described in detail.





*NOTE:*

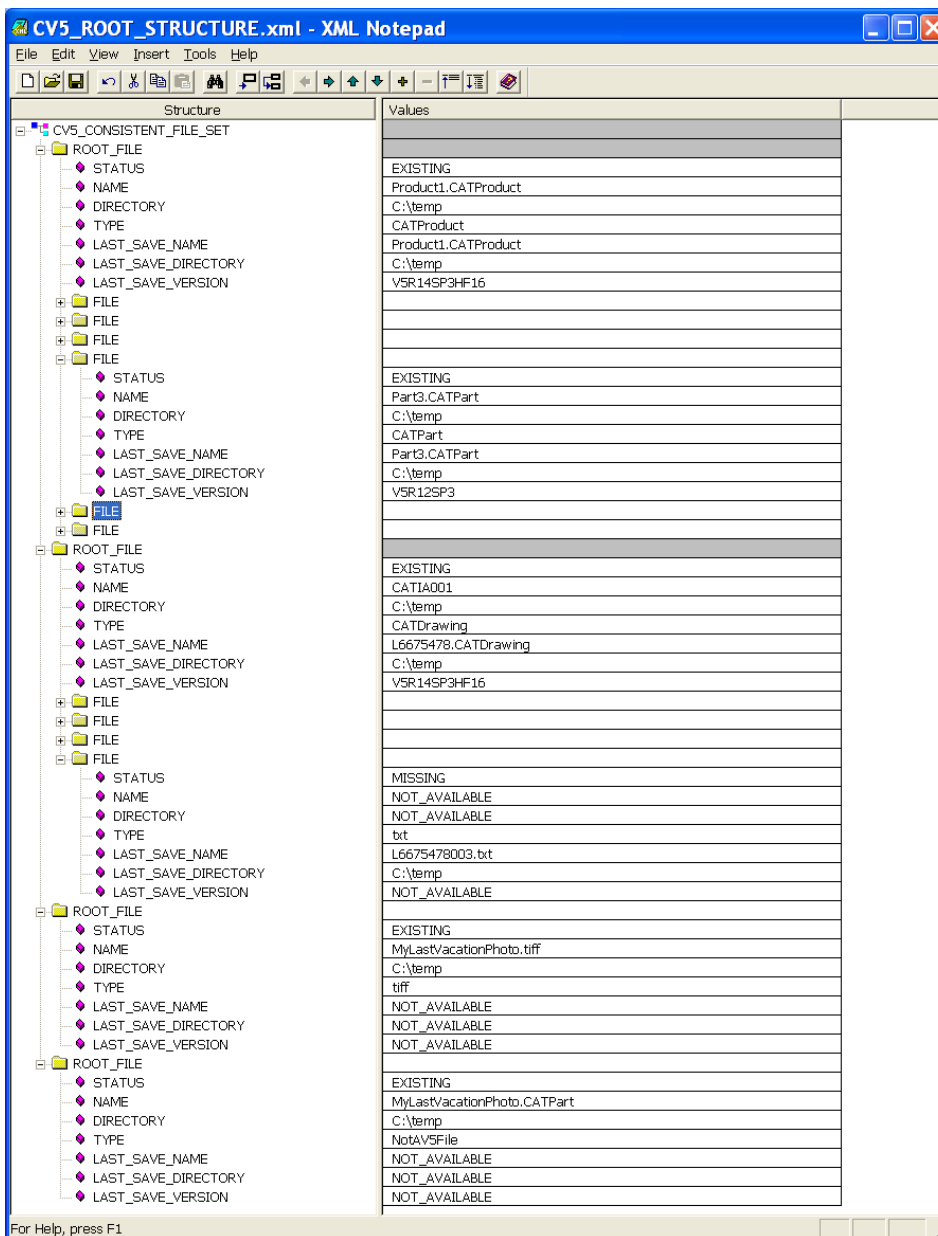
If a log file or a report file already exists, it will be overwritten by the next check.

### 3.2.1 Report Files for CV5 CONSISTENT FILE SET

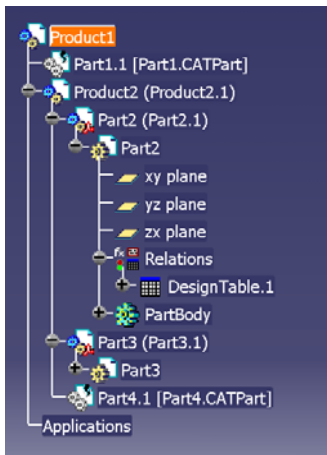
The report files are structured files in XML format containing the information of the checked document sets. Basically the report file consists of a list of root file elements. Each root file element consists of a list of associated file elements (on two levels—the first level for the root element, the second level for all linked documents). Both root file and file elements have following attributes:

Attribute	Explication	
NAME	Current file name	
DIRECTORY	Current directory of the file	
TYPE	<ul style="list-style-type: none"> <li>For CATIA V5 documents the real file type is indicated—independent of the current file name and extension (which might have been changed by renaming).</li> <li>For non-CATIA V5 documents the file name extension is indicated (without verification, except the case that a non-CATIA V5 document has been renamed with a CATIA V5 reserved name extension—see below).</li> <li>NotAV5File—this type is attributed to files that have a CATIA V5 file-name extension, but are not CATIA V5 documents.</li> </ul>	
LAST_SAVE_NAME	File name at last CATIA V5 save	
LAST_SAVE_DIRECTORY	Directory of the file at last CATIA V5 save	
LAST_SAVE_VERSION	CATIA V5 version at last CATIA V5 save	
	For V5R9 or lower:	The value will be NOT_AVAILABLE.
	For V5R10 or higher:	Version, release, service pack will be indicated.
	For V5R14 or higher:	Additionally hot fix will be indicated.
	NOT_AVAILABLE: In case that the value for LAST_SAVE_NAME, LAST_SAVE_DIRECTORY, LAST_SAVE_VERSION cannot be determined (CATIA V5 R9 or lower, non-CATIA files), to these attributes the value NOT_AVAILABLE is assigned.	
STATUS	EXISTING:	Referenced file is available in the checked directory.
	MISSING:	Referenced file is missing in the checked directory.
	RENAMED:	Referenced file is available in the checked directory, but has been renamed.
		Note: <ul style="list-style-type: none"> <li>The RENAMED state is available only in the “Resolved” report file with resolved naming conflicts.</li> <li>In the Resolved report is only reported that there is a name issue, but CV5 CONSISTENT FILE SET does not resolve it—no renaming to the original file name is executed.</li> </ul>

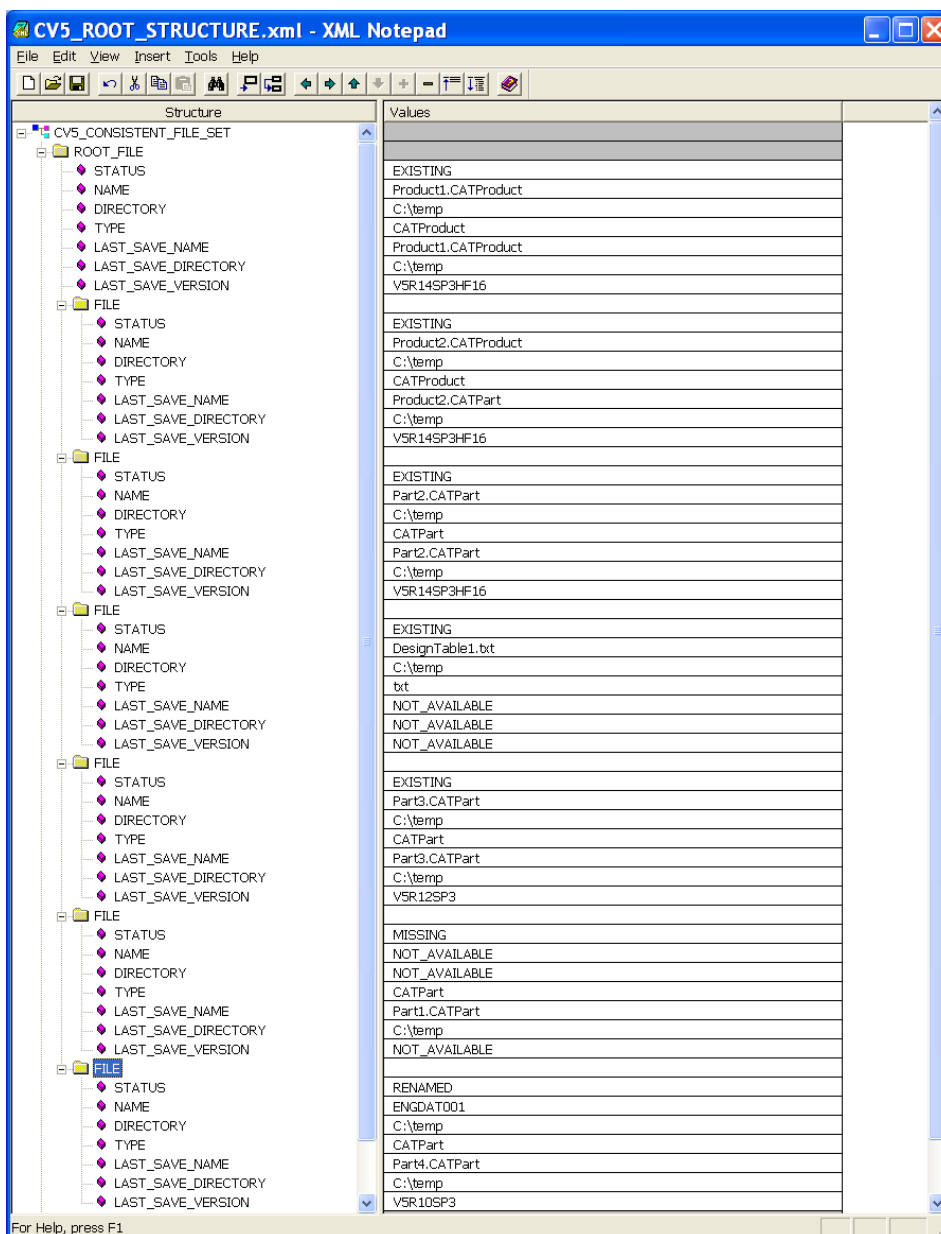
- Example for report file



- Sample



- Example for “Resolved” report file



### 3.2.2 Log File for CV5 CONSISTENT FILE SET

The log file is a text file containing the following information:

- Command issued to start the check
- Information on general errors (e.g. input directory not found)
- A list of all processed files
- A list of all root files
- A list of all missing files
- If necessary, a list of all renamed files.

### 3.2.3 Return Codes for CV5 CONSISTENT FILE SET

Code	Explication
0	Process OK
1	Impossible to find input directories
2	Impossible to open input directories
3	Impossible to find/open/write report file
4	No PX1 license available
5	Internal error
6	Documents missing.
7	No TC-XFileV5 license available.

→ For XFILEV5 return codes see section 2.3.1.3 Return Codes for XFILEV5 on page 39.

## 3.3 TCAXFileV5Customize.nls File

Keyword	Function
Export_CallExternalProcessCheckBox_Label	The parameter of this keyword (<Name>) is provided to modify the name of the <i>Call external process</i> check box on the <i>Export</i> dialog box of the Interactive Mode (check box ⑤ on page 13).

## 4. DELETE in Detail

### 4.1 Functionality in General

The DELETE tool facilitates deleting of CATIA documents:

- The selection of the CATIA document to be deleted (i. e. the opened root document or its selected sub-documents) is made in an active CATIA session. This enables the user to see clearly which documents will be deleted and helps to exclude mistakes in file selection while deleting documents.
- The *Secure Mode* option allows to verify before deleting if subdocuments of the selected document are referenced by other documents situated inside the directory of the current document. Referenced sub-documents will not be deleted.

DELETE allows to delete the following types of CATIA documents:

- CATProducts
- CATParts
- CATDrawings
- model (CATIA V4 models imported into CATIA V5)
- cgr (approximated model)

DELETE works both in DLName mode and in *Folder* mode (depending on the settings made in the CATIA menu *Tools > Options > General > Document*).

Contextual links in general are not taken in consideration.

After a document has been deleted, it remains displayed in CATIA as long as it is available in RAM; on the hard disk at this time it is however no more existing.

The DELETE operation is recorded in a log file (cf. 4.4 *Log File for Delete* on p. 54).

## 4.2 Work Steps

For the DELETE operation the following steps are to be done:

- (1) Open in CATIA the document to be deleted.
- (2) Start DELETE in CATIA.

DELETE is started from within CATIA clicking the *XFileV5Delete* button (on XFileV5Toolbar).

After starting the DELETE GUI will be opened (cf. p. 52).



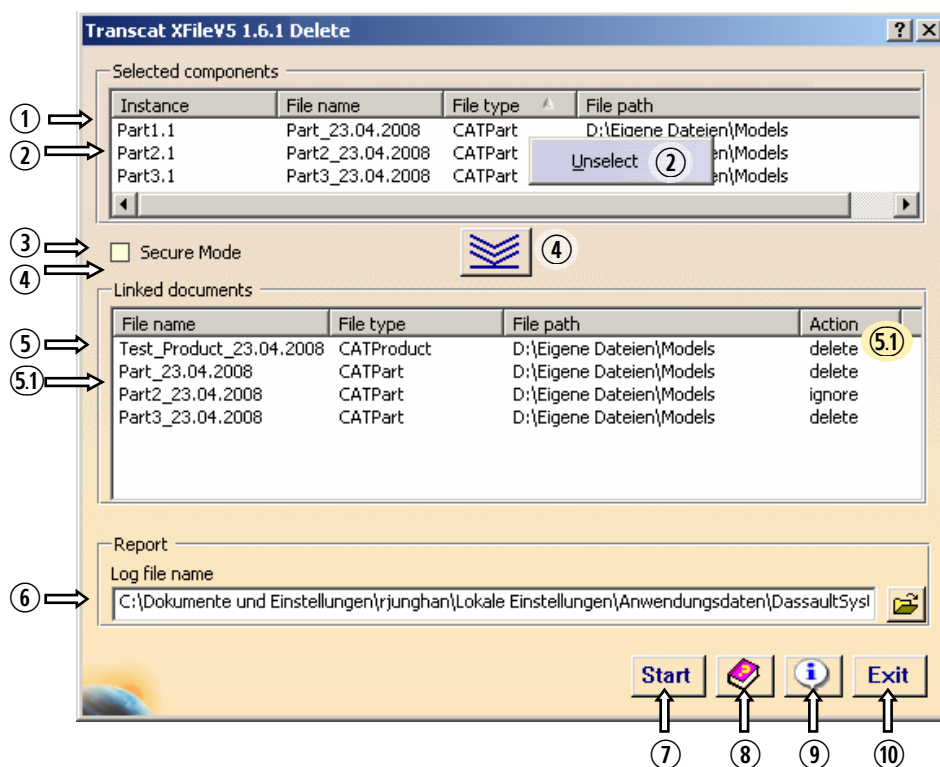
- (3) ► In case of deleting CATProducts it is to be selected whether to delete the complete CATProduct or only some of its sub-products/parts. To select the documents, click on the elements in the CATIA specification tree.
  - In case of other CATIA document types, this selection step is dropped as the DELETE tool automatically selects the root document.
- (4) Check in the Selected components list if the correct document or (in case of CATProducts) the correct components have been selected. See below Selected components list ①.  
 In case that a wrong document has been selected, close the DELETE tool, open in CATIA the correct document and then reopen DELETE. In case that the wrong components of CATProducts have been selected, unselect their names from the list, using the contextual menu, and select in CATIA the correct components. (Unselecting from the list does not signify erasing the documents themselves.)
- (5) If appropriate, activate secure mode. See Secure mode option button ③ p. 52.
- (6) Press List button ④ to prepare delete operation. See below—Secure mode p. 51. See List button ④ on p. 53.
- (7) In the *Linked files* list then will be listed which documents will be deleted. See *Linked files* list on p. 53.
- (8) Define here name and path for the log file. See p. 53 text box ⑥.
- (9) To initiate the delete operation, press *Start* button. See *Start* button ⑦ on p. 53.
- (10) When the delete operation is accomplished, look up the log file if desired. See 4.4 *Log File for Delete* on p. 54.
- (11) The DELETE window will be closed automatically.

## • Checks executed while deleting

During delete operation, the DELETE tool executes the following checks:

- (1) Are sub-documents of selected documents situated in an other directory than the current document is?  
→ Documents that are situated in other directories will be not deleted.
- (2) In case of CATProducts: Do sub-documents of the selected documents exist in several instances and have they all been selected for deleting?  
→ If all instances of this sub-document have been selected, they will be deleted.  
→ If not all instances have been selected, the selected sub-document will not be deleted as it is still required.
- (3) Secure mode:
  - ▶ If the *Secure mode* option is activated, it will be checked whether the selected documents are referenced by other documents situated inside the current directory.  
→ Referenced documents will be not deleted as they are required for the referencing documents.
  - ▶ If the *Secure mode* option is not activated, it will be not checked whether the selected documents are referenced by other documents situated inside the current directory.  
→ After pressing the *Start* button, all documents will be deleted irrespective of whether they are referenced by other documents situated inside the current directory or not.

## 4.3 Graphical User Interface of DELETE



Explanation:

### ① *Selected components* list

This list displays the CATIA document(s) preselected to be deleted. Together with the selected document also its complete substructure is preselected for deleting. The list is filled as follows:

- For all CATIA documents excluded CATProduct, the list is filled automatically with the name of the currently opened CATIA document.
- In case of CATProducts, the documents to be deleted must be selected by clicking on their name in CATIA specification tree. This can be either the complete CATProduct or some of its components.

### ② *Unselect* command of the context-sensitive menu

This command is available if the list contains the name of a CATProduct or the names of components of a CATProduct; it is called by right-mouse clicking on a list item. Pressing this button removes the name from the list, but the component itself will be not deleted.

### ③ *Secure mode* option button

If this option is activated, DELETE will check the selected documents on their references—see p. 51 (3) Secure mode.

④ *List files* button

Click this button to release for deleting the components listed in the *Selected components* list ①. This starts the check verifying whether there are files referencing the documents listed in list ①. The names of the retrieved linked documents will be, together with the names of the CATIA documents selected in the ①, will be listed in the *Linked files* list ⑤.

If the button has the whirl symbol, the *Linked files* list ⑤ must be updated by clicking the button.

⑤ *Linked files* list

This list (according to the results of the checks described on page 51) states in the *Action* column ⑤ which components will be deleted and which not:

- Delete operation deletes only the components with the *delete* state.
- Components with the *Ignore* state will be excluded from deleting. (*Ignore* state is attributed (1) to components that are referenced by other documents, (2) to documents that are situated in directories outside of the directory of the current document, and (3) to documents that have several instances in case that not all components have been selected.)

⑥ *Log file name* text box

Define here name and path for the log file.

⑦ *Start* button

Pressing this button launches the delete operation.

This button is deactivated if:

- the *Linked files* list ⑤ is empty or if
- the *Linked files* list contains file names, but the *Secure mode* option button ③ was activated or deactivated after filling the list (after what *List files* button ④ button is marked with the whirl symbol) or
- In the CATIA specification tree a new component has been highlighted.

To activate the *Start* button, fill the *Selected components* list ① or update *Linked files* list ⑤ by pressing the *List files* button ④.

⑧ *Help* button

Pressing this button opens the help for DELETE.

⑨ *Info* button

Pressing this button opens a window with information about DELETE.

⑩ *Close* button

Pressing this button closes the DELETE window, all selections made before being discarded.

## 4.4 Log File for DELETE

The log file is a text file containing the following information:

- Program version number
- Number and names of the selected components.
- Total number of documents related to the selected component, how many of them were intended to be deleted. How many of them have been deleted and how many not have been deleted.
- Information on general errors
- Information:
  - Directory of the current document;
  - Secure mode activated or not;
  - PX1 license was not available in the current interactive session.
- Return Codes:
  - 0 – OK
  - 1 – One or several documents could not be deleted.

## 5. MOVE in Detail

### 5.1 Functionality in General

The MOVE tool facilitates moving CATIA documents:

- Since the move operation is performed from within CATIA while the CATIA document to move is opened, the user can see directly which document will be moved. This helps to exclude mistakes in file selection while moving documents.
- While moving files with activated secure mode, checks are executed to ensure that documents that are used in other documents will not be deleted.. For details see section „Checks executed while moving“ p. 56.
- The copy operation is executed using CATIA *SendTo* method ensuring that links will be adapted.

MOVE supports moving the following CATIA documents:

- CATProducts
- CATParts
- CATDrawings
- model (CATIA V4 models imported into CATIA V5)
- cgr (approximated model)

MOVE works both in DLName mode and in *Folder* mode (depending on the settings made in the CATIA menu *Tools > Options > General > Document*).

Contextual links in general are not taken in consideration.

After a document has been deleted, it remains displayed in CATIA as long as it is available in RAM; on the hard disk at this time it is however no more existing.

The MOVE operation is recorded in a log file (cf. 5.4 *Log File for Move* on p. 59).

## 5.2 Work Steps

For the MOVE operation the following steps are to be done:

- (1) Open in CATIA the document to be moved.
- (2) Start MOVE in CATIA.

MOVE is started from within CATIA clicking the *XFileV5Move* button (on XFileV5Toolbar).

After starting the MOVE GUI will be opened (cf. p. 50).



- (3) Check in the *Current document* info box if the correct document has been selected.  
In case that a wrong document has been selected, close the MOVE tool, open in CATIA the correct document and then reopen MOVE.  
See *Current document* info box on p. 57).
- (4) If appropriate, activate secure mode.  
See below—(3) *Secure mode* on p. 57.  
See *Secure mode option* button ② on p. 58.
- (5) Press *List files* button to prepare move operation.  
See *List files* button ③ p. 58.
- (6) In the *Linked document* list then will be listed which documents will be moved.  
See *Linked document* list ④ p. 58.
- (7) Specify the directory into which the documents are to be moved.  
See *Move to—New Location* text box ⑤ p. 58.
- (8) Define here name and path for the log file.  
See *Log file name* text box ⑥ p. 58.
- (9) To initiate the move operation, press the *Start* button.  
See *Start* button ⑦ p. 58.
- (10) When the move operation is accomplished, look up the log file if desired.  
See 5.4 *Log File for Move* on p. 59.
- (11) The MOVE window will be closed automatically.

### • Checks executed while moving

During move operation, the MOVE tool executes the following checks:

- (1) Are linked documents of the current document situated in an other directory than the current document is? → Documents that are situated in other directories will be excluded from the move operation, i. e. they will be not deleted and not copied (they will be ignored).

## (2) Secure mode:

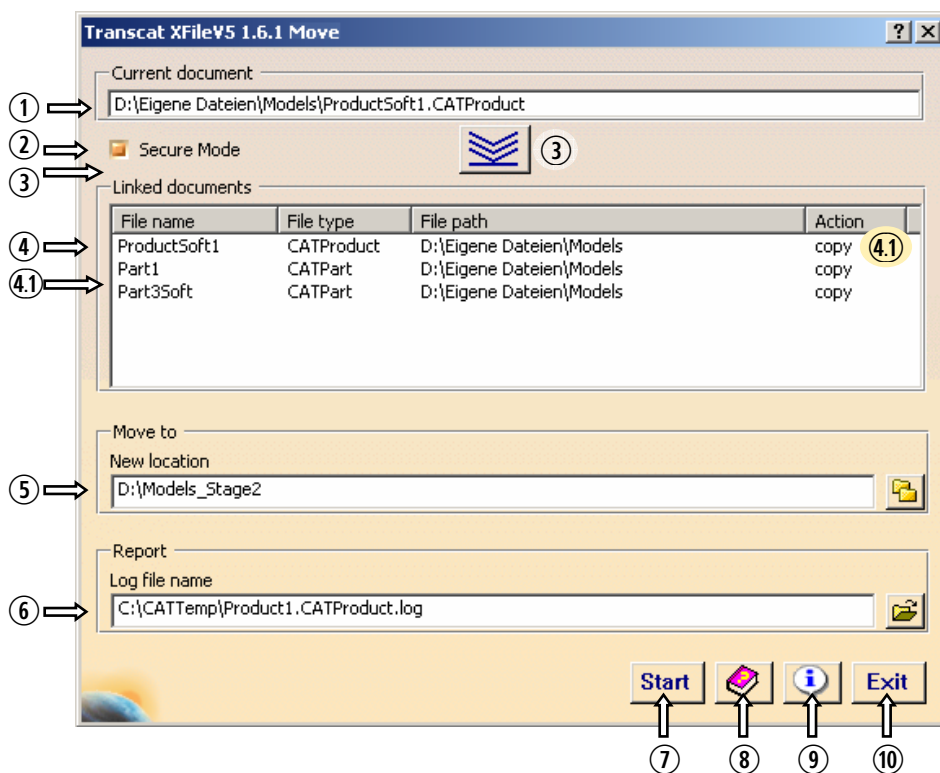
► If the *Secure Mode* option is activated, it will be checked whether documents within the current document are referenced by other documents situated inside the directory of the current document.

► If the *Secure mode* option is not activated, it will be not checked whether documents of the current document are referenced by other documents situated inside the directory of the current document.

→ Referenced documents will be not deleted by the move operation (as they are required for the referencing components), but will be copied.

→ After pressing the *Start* button, all documents will be moved irrespective of whether they are referenced by other documents situated inside the directory of the current document or not.

## 5.3 Graphical user interface of MOVE



### Explanation:

#### ① *Current document* info box

This info box displays the current CATIA document that is to be moved. This box is filled automatically.

② *Secure mode* option button

If this option is activated, MOVE will check the selected document on their references—for explanation see (3) *Secure mode* on p. 51 .

③ *List files* button

Click this button to release for moving the document listed in the *Current document* info box. Clicking starts the check verifying whether there are files referencing the document listed in the box ①. The names of the retrieved linked documents will be, together with the name of the CATIA document selected in the *Linked document* list ①, will be listed in the *Linked document* list ④.

If the button has the whirl symbol, the *Linked document list* ④ must be updated by clicking the button.

④ *Linked document* list

This list states in the *Action* column ④ which components will be moved and which not:

- Move operation will be performed for documents having the *Cut* state;
- Copy operation will be performed for documents having the *Copy* state;
- Documents with the *Ignore* state will be excluded from moving (this are documents situated in other directories).

⑤ *Move to—New Location* text box

Define here the directory into which the document is to be moved.

⑥ *Log file name* text box

Define here name and path for the log file.

⑦ *Start* button

Pressing this button launches the move operation.

This button is deactivated if:

- the *Linked document* list ④ is empty or if
- the *Linked document* list ④ contains file names, but the *Secure mode* option button ② was activated or deactivated after filling the list (after what *List files* button ③ is marked with the whirl symbol).

To activate the *Start* button, fill the *Linked document* list ④ or update it by pressing the *List files* button ③.

⑧ *Help* button

Pressing this button opens the help for MOVE.

⑨ *Info* button

Pressing this button opens a window with information about MOVE.

⑩ *Close* button

Pressing this button closes the MOVE window, all selections made before being discarded.

## 5.4 Log File for MOVE

The log file is a text file containing the following information:

- Program version number
- Number and names of the linked documents (root documents and child documents)
- Number of documents that were intended to be moved;  
how many of them have been moved and how many not have been moved.
- Information on general errors (e. g. no write access on target directory)
- Information:
  - Directory of the current document;
  - *Secure* mode activated or not;
  - Target directory
  - PX1 license was not available in the current interactive session.wsky
- Return Codes:
  - o – OK
  - 1 – One or several documents could not be deleted.
  - 2 – Internal error
  - 3 – No PX1 license available.
  - 4 – One or several documents could not be copied.
  - 5 – One or several documents could not be copied and/or not deleted.

\* \* \*

